

WAAS CH 60929 W29A	APP CRS 289°	Rwy Idg TDZE Apt Elev	6000 308 310
--	------------------------	-----------------------------	---

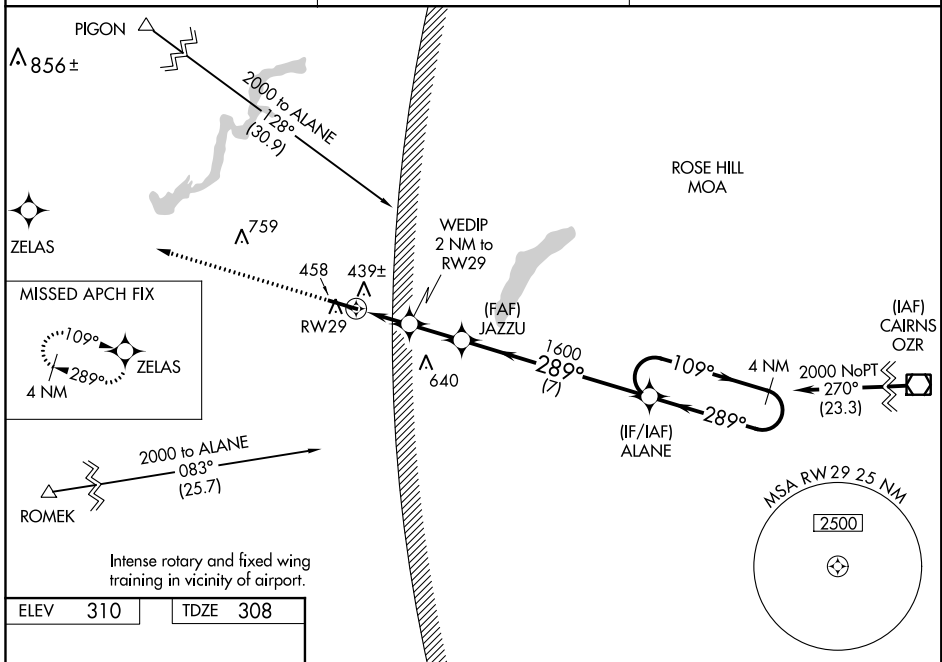
RNAV (GPS) RWY 29

SOUTH ALABAMA RGNL AT BILL BENTON FIELD (79J)

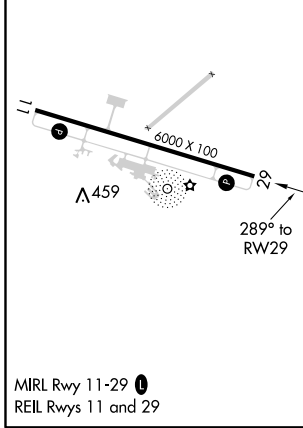
⚠ For uncompensated Baro-VNAV systems, LNAV/VNAV NA below -15°C (5°F) or above 54°C (130°F). DME/DME RNP-0.3 NA. Helicopter visibility reduction below 3/4 SM NA. When local altimeter setting not received, use Cairns AAF altimeter setting and increase all DA 82 feet, all MDA 100 feet. Increase LPV and LNAV/VNAV visibilities 3/8 mile, LNAV and Circling Cat C and D 1/4 mile. Baro-VNAV and VDP NA when using Cairns AAF altimeter setting.

MISSED APPROACH: Climb to 2500 direct ZELAS and hold.

ASOS 134.875	CAIRNS APP CON ★ 133.45 239.275	UNICOM 122.8 (CTAF) 0
------------------------	---	---------------------------------



ELEV 310 TDZE 308



2500	ZELAS	VGSi and RNAV glidepath not coincident (VGSi Angle 3.50/TCH 47).		4 NM Holding Pattern
*LNAV only		WEDIP 2 NM to RW29	JAZZU 1600	ALANE
*1 NM to RW29		*980		1600
-1 NM		-1 NM	1.9 NM	7 NM
CATEGORY	A	B	C	D
LPV DA	630-1		322 (400-1)	
LNAV/VNAV DA	628-1		320 (400-1)	
LNAV MDA	720-1	412 (500-1)	720-1 1/8	412 (500-1 1/8)
CIRCLING	820-1	510 (600-1)	820-1 1/2	860-2
			510 (600-1 1/2)	550 (600-2)

SE-4, 31 JAN 2019 to 28 FEB 2019

SE-4, 31 JAN 2019 to 28 FEB 2019