

WAAS CH <b>82600</b> <b>W11A</b>	APP CRS <b>109°</b>	Rwy ldg TDZE Apt Elev	<b>6000</b> <b>310</b> <b>310</b>
--	------------------------	-----------------------------	---

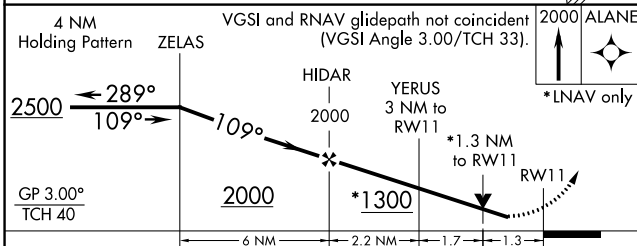
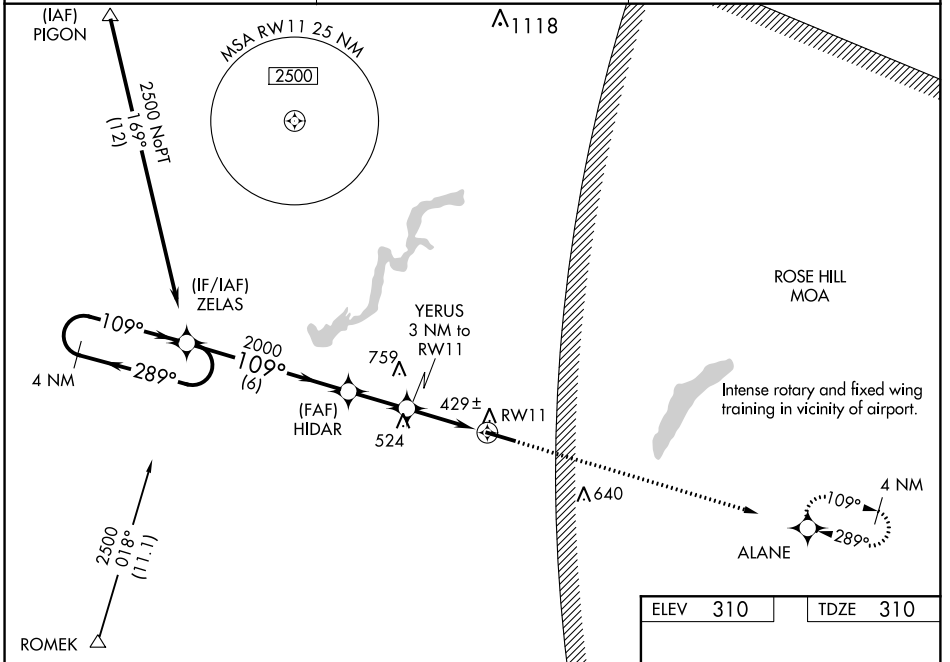
# RNAV (GPS) RWY 11

SOUTH ALABAMA RGNL AT BILL BENTON FIELD (79J)

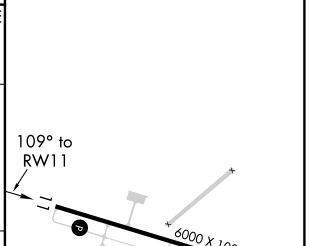
**⚠** For uncompensated Baro-VNAV systems, LNAV/VNAV NA below -15°C (5°F) or above 54°C (130°F). DME/DME RNP-0.3 NA. Helicopter visibility reduction below ¼ SM NA. When local altimeter setting not received, use Cairns AAF altimeter setting and increase all DA 82 feet, all MDA 100 feet. Increase all LPV and LNAV/VNAV visibilities ¾ mile all Cats, LNAV and Circling Cats C and D ¼ mile. Baro-VNAV and VDP NA when using Cairns AAF altimeter setting.

MISSED APPROACH: Climb to 2000 direct ALANE and hold.

ASOS <b>134.875</b>	CAIRNS APP CON ★ <b>133.45 239.275</b>	UNICOM <b>122.8 (CTAF) 0</b>
------------------------	---	---------------------------------



ELEV 310	TDZE 310
----------	----------



CATEGORY	A	B	C	D
LPV DA	615-1		305 (400-1)	
LNAV/VNAV DA	655-1½		345 (400-1½)	
LNAV MDA	760-1	450 (500-1)	760-1¾	450 (500-1¾)
CIRCLING	820-1	510 (600-1)	820-1½	860-2 550 (600-2)

MIRL Rwy 11-29 0  
REIL Rwy 11 and 29

# RNAV (GPS) RWY 11

SE-4, 31 JAN 2019 to 28 FEB 2019

SE-4, 31 JAN 2019 to 28 FEB 2019