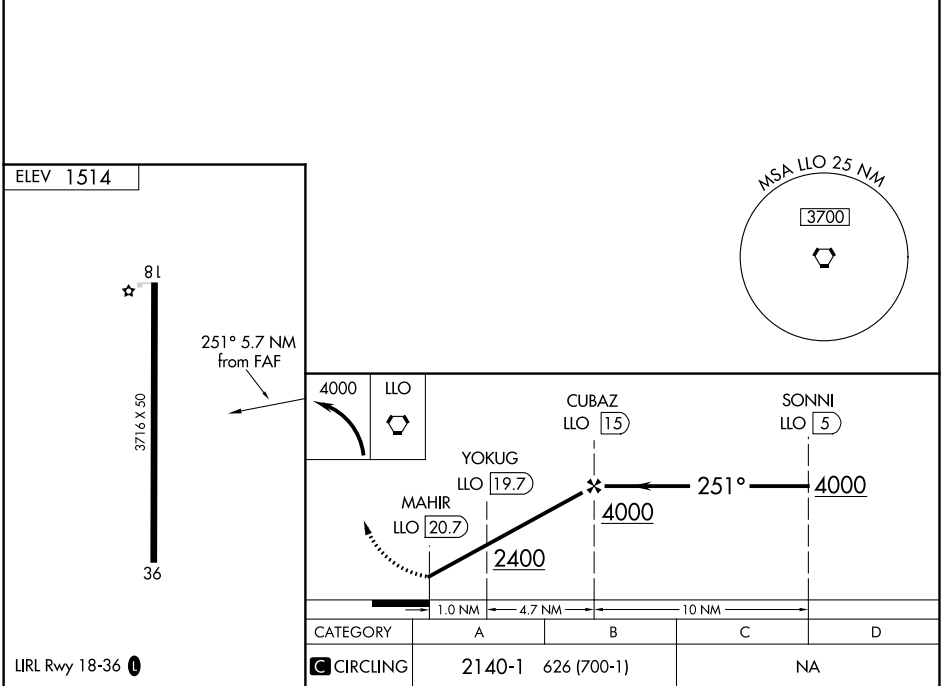
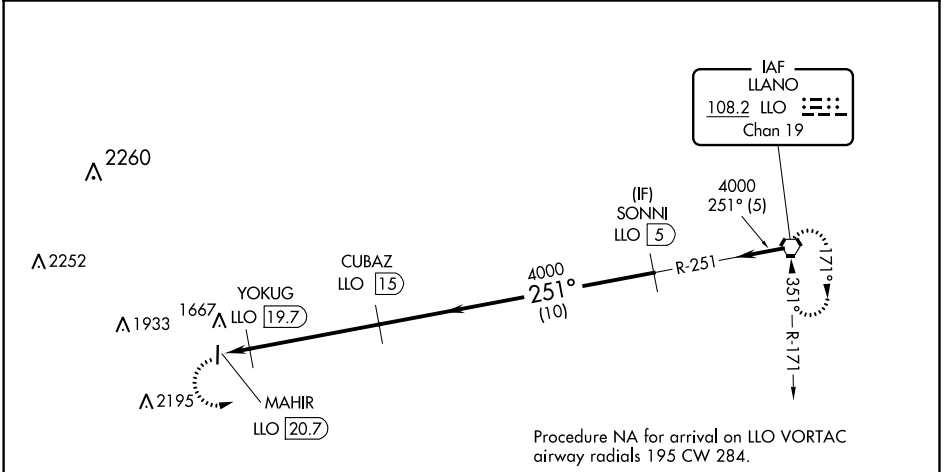


VORTAC LLO <b>108.2</b> Chan <b>19</b>	APP CRS <b>251°</b>	Rwy Idg TDZE Apt Elev <b>1514</b>	<b>N/A</b> <b>N/A</b> <b>1514</b>
--	------------------------	---	---

**VOR-A**  
MASON COUNTY (T92)

<p><b>▼</b> Rwy 18/36 helicopter visibility reduction below 1 SM NA.  <b>▲ NA</b> DME required. Procedure NA at night. Use Brady altimeter setting; when not received, use Llano altimeter setting.</p>		<p>MISSED APPROACH: Climbing left turn to 4000 direct LLO VORTAC and hold.</p>	
BRADY AWOS-3 <b>118.375</b>	HOUSTON CENTER <b>132.35 317.5</b>	CTAF <b>122.9</b>	<b>123.3 0</b>



SC-3, 31 JAN 2019 to 28 FEB 2019

SC-3, 31 JAN 2019 to 28 FEB 2019