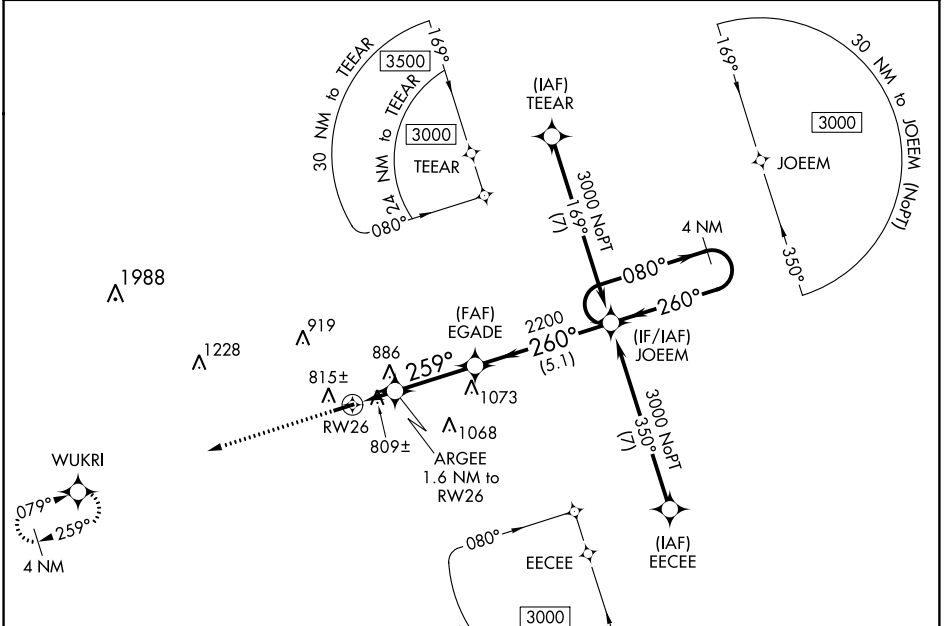


WAAS CH 81935 W26A	APP CRS 259°	Rwy Idg TDZE Apt Elev	4051 696 698
--	------------------------	-----------------------------	---

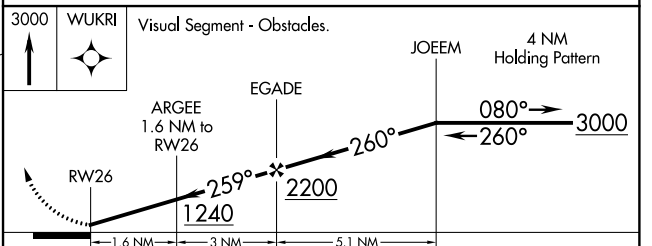
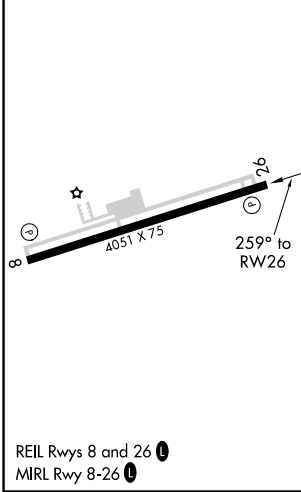
RNAV (GPS) RWY 26

LAURENS COUNTY (LUX)

<p>When local altimeter setting not received, use Greenwood altimeter setting and increase all MDA 60 feet. DME/DME RNP-0.3 NA. Rwy 26 helicopter visibility reduction below 3/4 SM NA.</p>	MISSED APPROACH: Climb to 3000 direct WUKRI and hold.	
	AWOS-3 123.975	GREER APP CON ★ 120.6 350.2



ELEV 698	TDZE 696
----------	----------



CATEGORY	A	B	C	D
LP MDA	1060-1	364 (400-1)		NA
LNAV MDA	1140-1	444 (500-1)		NA
CIRCLING	1200-1	502 (600-1)		NA

SE-2, 31 JAN 2019 to 28 FEB 2019

SE-2, 31 JAN 2019 to 28 FEB 2019