

WAAS CH 78016 W33A	APP CRS 332°	Rwy Idg 5796 TDZE 1203 Apt Elev 1229
--	------------------------	---

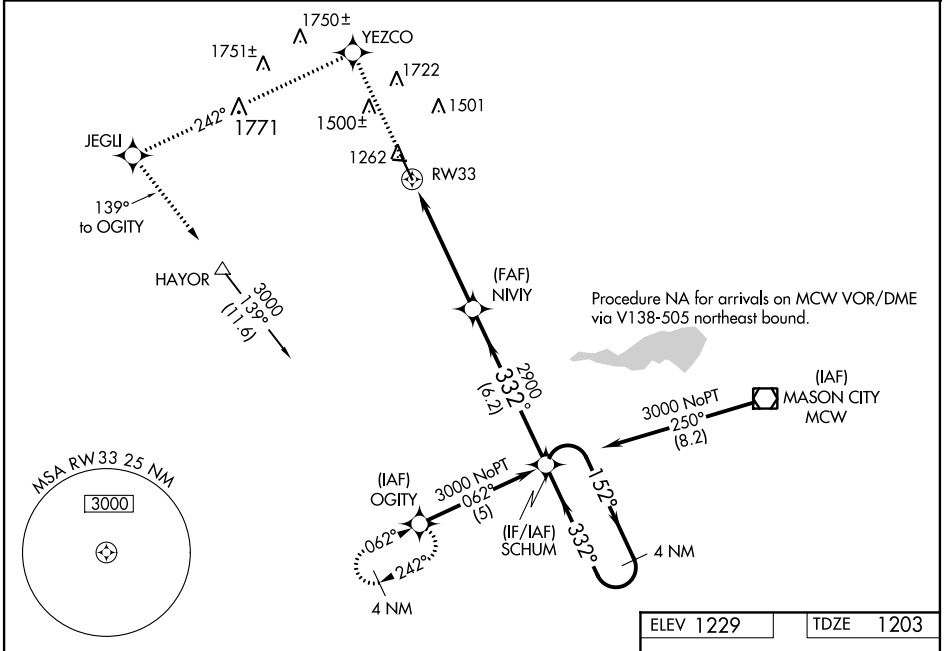
RNAV (GPS) RWY 33

FOREST CITY MUNI (FXY)

⚠ Baro-VNAV NA when using Mason City altimeter setting. For uncompensated Baro-VNAV systems, LNAV/VNAV NA below -17°C (2°F) or above 54°C (130°F). DME/DME RNP-0.3 NA. Visibility reduction by helicopters NA. When local altimeter setting not received, use Mason City altimeter setting and increase all DA 34 feet and all MDA 40 feet; increase LNAV Cat D visibility ¼ mile. Circling to Rwy 9-27 NA at night. When VGSi inop, procedure NA at night.

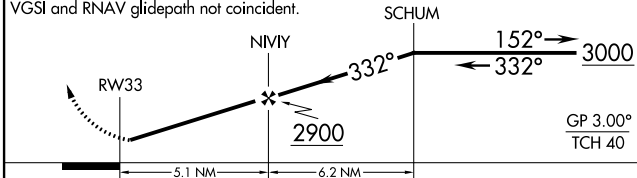
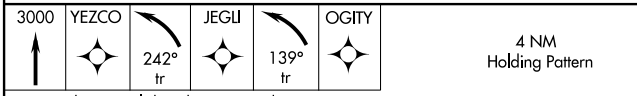
MISSED APPROACH: Climb to 3000 direct YEZCO and left turn via track 242° to JEGLI and left turn via track 139° to OGITY and hold.

AWOS-3 123.925	MINNEAPOLIS CENTER 127.3 380.2	UNICOM 122.8 (CTAF) ①
--------------------------	--	---------------------------------



NC-3, 31 JAN 2019 to 28 FEB 2019

NC-3, 31 JAN 2019 to 28 FEB 2019



CATEGORY	A	B	C	D
LPV DA		1453-1	250 (300-1)	
LNAV/VNAV DA		1535-1¼	332 (400-1¼)	
LNAV MDA		1520-1	317 (300-1)	
CIRCLING	1680-1 451 (500-1)	1760-1 531 (600-1)	1760-1½ 531 (600-1½)	1820-2 591 (600-2)

