

WAAS CH 90428 W15A	APP CRS 152°	Rwy Idg 5196 TDZE 1207 Apt Elev 1229
--	------------------------	---

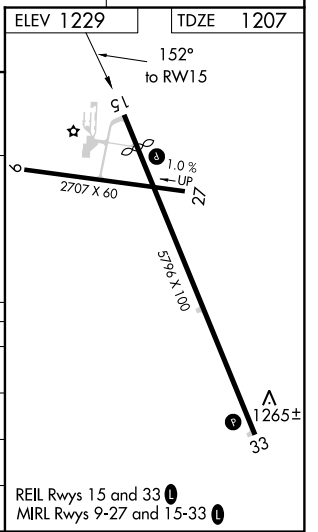
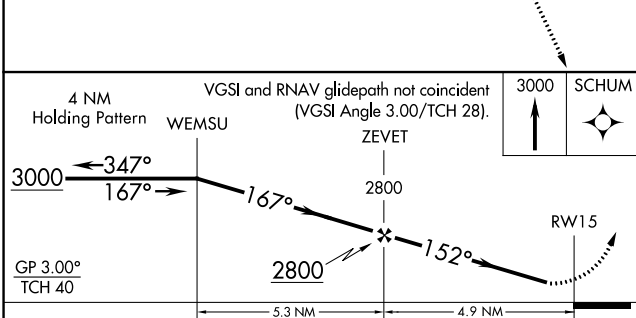
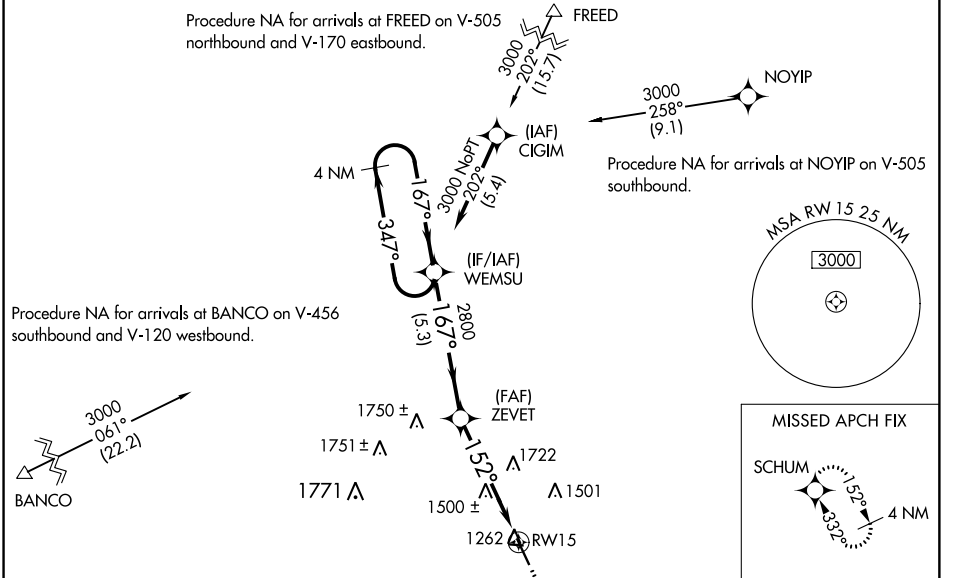
RNAV (GPS) RWY 15

FOREST CITY MUNI (FXY)

▼ Circling to Rwy 9/27 NA at night. When VGSI inop, Circling Rwy 33 NA at night.
▲ Baro-VNAV NA when using Mason City altimeter setting. For uncompensated Baro-VNAV systems, LNAV/VNAV NA below -29°C (-20°F) or above 36°C (96°F). When VGSI inop, Straight-in/Circling Rwy 15 procedure NA at night. DME/DME RNP-0.3 NA. Visibility reduction by helicopters NA. When local altimeter setting not received, use Mason City altimeter setting and increase all DA 34 feet and all MDA 40 feet, increase LNAV Cats C and D visibility to 1¾, and Circling Cat C visibility to 1¾.

MISSED APPROACH: Climb to 3000 direct to SCHUM and hold.

AWOS-3 123.925	MINNEAPOLIS CENTER 127.3 380.2	UNICOM 122.8 (CTAF) ①
--------------------------	--	---------------------------------



CATEGORY	A	B	C	D
LPV DA		1457-1	250 (300-1)	
LNAV/VNAV DA		1485-1	278 (300-1)	
LNAV MDA	1760-1	553 (600-1)	1760-1½	553 (600-1½)
CIRCLING	1760-1	531 (600-1)	1760-1½ 531 (600-1½)	1820-2 591 (600-2)

REIL Rwy 15 and 33 ①
 MRL Rwy 9-27 and 15-33 ①

NC-3, 31 JAN 2019 to 28 FEB 2019

NC-3, 31 JAN 2019 to 28 FEB 2019