

WAAS CH 63216 W15A	APP CRS 151°	Rwy Idg TDZE Apt Elev	5500 236 236
--	------------------------	-----------------------------	---

RNAV (GPS) RWY 15

RICHMOND EXECUTIVE-CHESTERFIELD COUNTY (F'CI)

⚠ NA For uncompensated Baro-VNAV systems, LNAV/VNAV NA below -15°C (5°F) or above 54°C (130°F). DME/DME RNP-0.3 NA. When local altimeter setting not received, use Richmond Intl altimeter setting and increase all DA 36 feet, and all MDA 40 feet, increase LNAV/VNAV all Cats visibility ¼ mile. VDP and Baro-VNAV NA when using Richmond Intl altimeter setting.

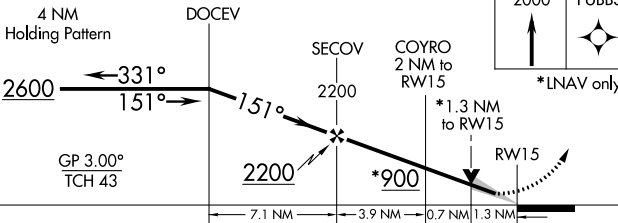
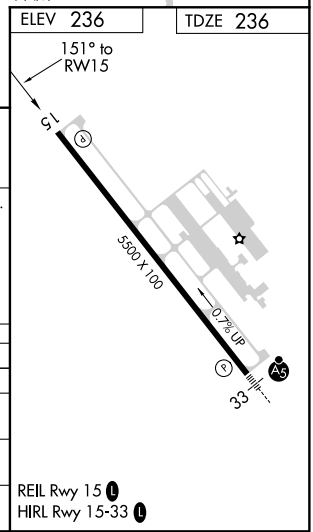
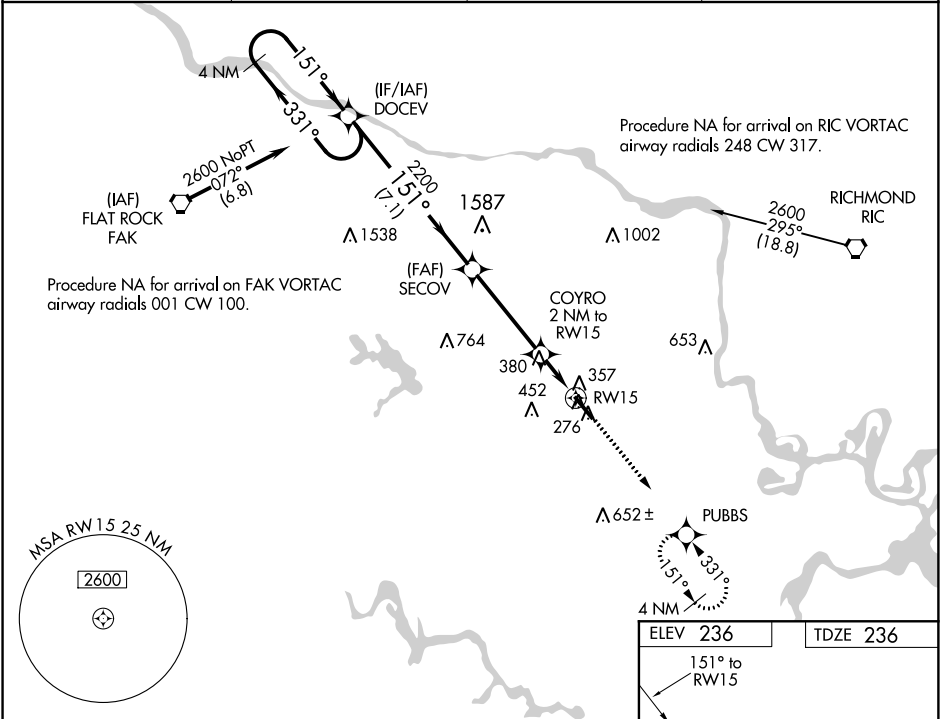
MISSED APPROACH: Climb to 2000 direct PUBBS and hold.

AWOS-3PT
128.625

POTOMAC APP CON
126.75 307.2

CLNC DEL
124.6

UNICOM
123.05 (CTAF) 0



CATEGORY	A	B	C	D
LPV DA		486-1	250 (300-1)	
LNAV/VNAV DA		692-1½	456 (500-1½)	
LNAV MDA	680-1	444 (500-1)	680-1⅜ 444 (500-1⅜)	680-1½ 444 (500-1½)
CIRCLING	720-1	484 (500-1)	760-1½ 524 (600-1½)	800-2 564 (600-2)

RNAV (GPS) RWY 15

NE-3, 31 JAN 2019 to 28 FEB 2019

NE-3, 31 JAN 2019 to 28 FEB 2019