

VORTAC RIC 114.1 Chan 88	APP CRS 165°	Rwy Idg TDZE Apt Elev	5402 207 207
--	------------------------	-----------------------------	---

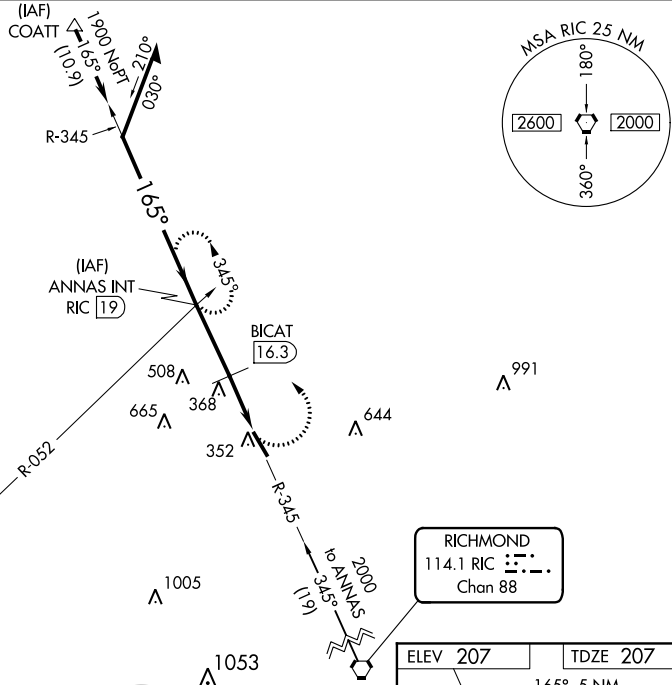
VOR RWY 16
HANOVER COUNTY MUNI (OFP)

⚠ When local altimeter setting not received, use Richmond Intl altimeter setting and increase all MDA 40 feet. Rwy 16 helicopter visibility reduction below 3/4 SM NA.

⚠ MISSED APPROACH: Climbing left turn to 2000 via RIC R-345 to ANNAS INT/19 DME and hold.

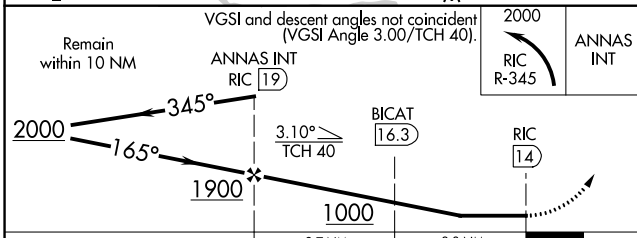
ASOS 119.025	POTOMAC APP CON 126.75 307.2	CLNC DEL 125.4	UNICOM 122.7 (CTAF)
------------------------	--	--------------------------	-------------------------------

Procedure NA for arrivals at COATT on V155 northeast bound.



FLAT ROCK
113.3 FAK
Chan 80

RICHMOND
114.1 RIC
Chan 88



ELEV 207	TDZE 207
165° 5 NM from FAF	
91 3	
5402 x 100	
3A	
REIL Rwys 16 and 34	
MRL Rwy 16-34	
FAF to MAP 5 NM	
Knots	60 90 120 150 180
Min:Sec	5:00 3:20 2:30 2:00 1:40

CATEGORY	A	B	C	D
S-16	1000-1 793 (800-1)	1000-1 1/4 793 (800-1 1/4)	1000-2 1/4 793 (800-2 1/4)	1000-2 1/2 793 (800-2 1/2)
C CIRCLING	1000-1 793 (800-1)	1000-1 1/4 793 (800-1 1/4)	1000-2 1/4 793 (800-2 1/4)	1020-2 3/4 813 (900-2 3/4)
BICAT FIX MINIMUMS (DME REQUIRED)				
S-16	820-1	613 (700-1)	820-1 3/4	613 (700-1 1/4)
C CIRCLING	820-1	613 (700-1)	900-2 693 (700-2)	1020-2 3/4 813 (900-2 3/4)

NE-3, 31 JAN 2019 to 28 FEB 2019

NE-3, 31 JAN 2019 to 28 FEB 2019