

VOR CGG <b>109.8</b>	APP CRS <b>127°</b>	Rwy Idg <b>5005</b>
		TDZE <b>1154</b>
		Apt Elev <b>1158</b>

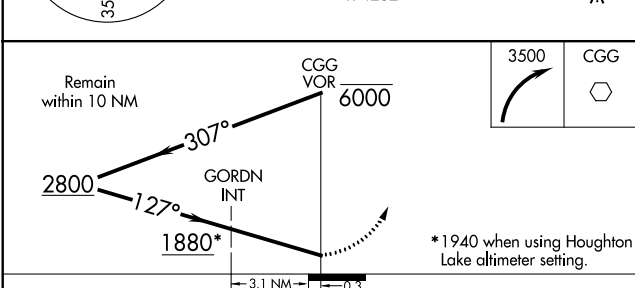
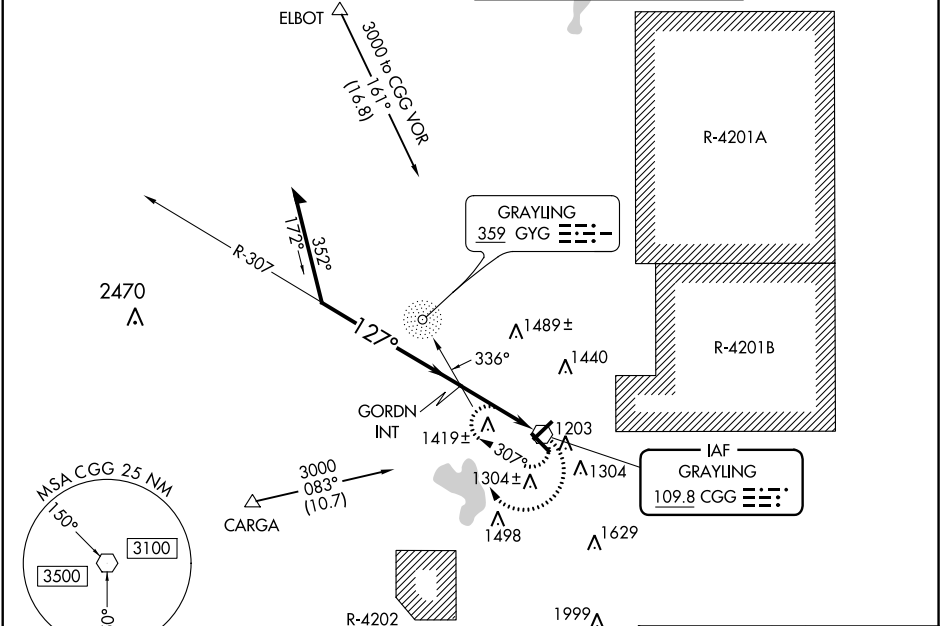
# VOR RWY 14

GRAYLING AAF (GOV)

**▼** Rwy 14 helicopter visibility reduction below ¾ SM NA. Circling Rwy 5, 23, 32 NA at night.  
**▲** NA When local altimeter setting not received, use Houghton Lake altimeter setting and increase all MDAs 60 feet and visibility S-14 and Circling Cat B/C/D ½ SM and GORDN fix minimums S-14 and Circling Cat C ½ SM.

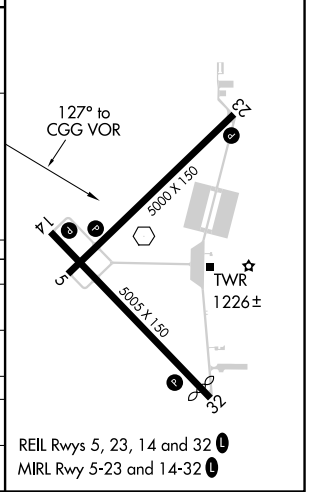
**MISSED APPROACH:**  
 Climbing right turn to 3500 in CGG VOR holding pattern.

ATIS <b>119.075</b>	MINNEAPOLIS CENTER <b>125.475 269.45</b>	GRAYLING TOWER ★ <b>126.2 (CTAF) 0</b>	GND CON <b>121.9</b>
------------------------	---	---	-------------------------



ELEV 1158	TDZE 1154
-----------	-----------

CATEGORY	A	B	C	D
S-14	1880-1 726 (800-1)		1880-2 726 (800-2)	1880-2¼ 726 (800-2¼)
CIRCLING	1880-1 722 (800-1)		1880-2 722 (800-2)	1880-2¼ 722 (800-2¼)
GORDN FIX MINIMUMS				
S-14	1720-1 566 (600-1)		1720-1½ 566 (600-1½)	1720-1¾ 566 (600-1¾)
CIRCLING	1720-1 562 (600-1)		1720-1½ 562 (600-1½)	1760-2 602 (700-2)



EC-1, 31 JAN 2019 to 28 FEB 2019

EC-1, 31 JAN 2019 to 28 FEB 2019