

RNAV (GPS) RWY 14

GRAYLING AAF (GOV)

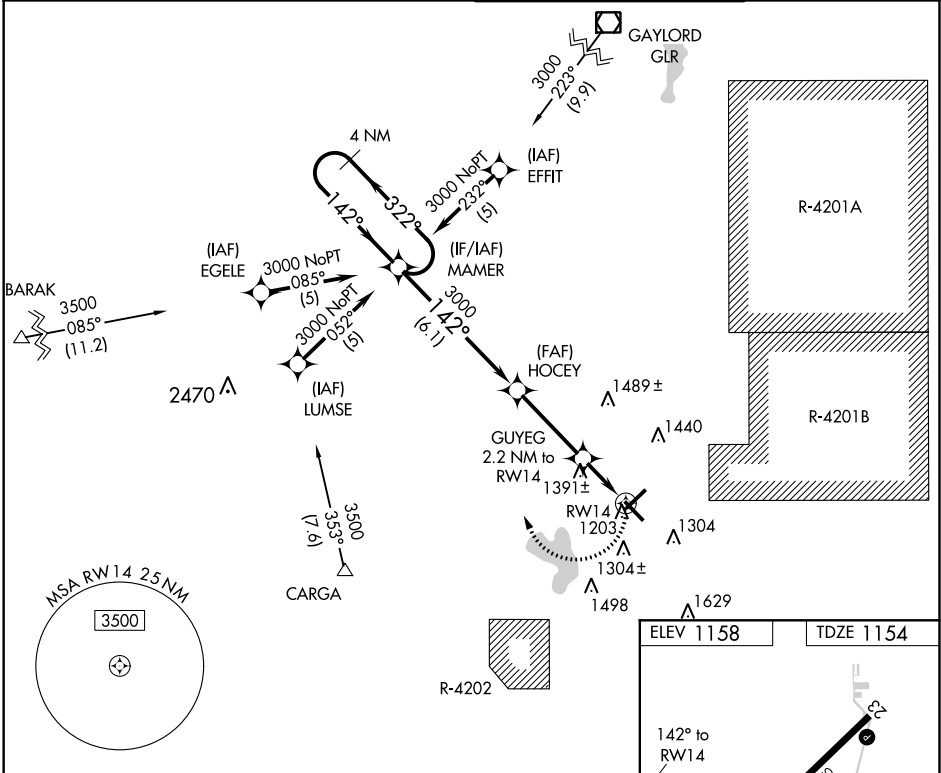
APP CRS 142°	Rwy Idg TDZE Apt Elev	5005 1154 1158
------------------------	-----------------------------	---

RNP APCH:

- ⚠ Circling Rwy 5, 23, 32 NA at night. Rwy 14 helicopter visibility reduction below 3/4 SM NA.
- ⚠ When local altimeter setting not received use Houghton Lake altimeter setting and increase all MDAs 60 feet and visibility Cat C 1/2 SM.

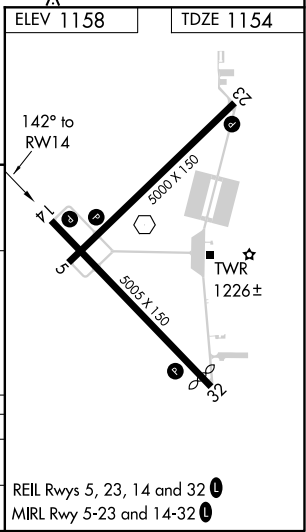
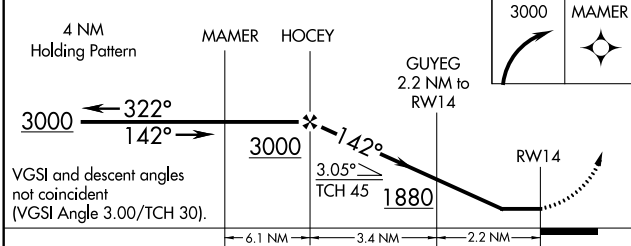
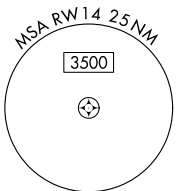
MISSED APPROACH:
Climbing right turn to 3000
direct MAMER and hold.

ATIS 119.075	MINNEAPOLIS CENTER 125.475 269.45	GRAYLING TOWER ★ 126.2 (CTAF) 0	GND CON 121.9
------------------------	---	---	-------------------------



EC-1, 31 JAN 2019 to 28 FEB 2019

EC-1, 31 JAN 2019 to 28 FEB 2019



CATEGORY	A	B	C	D
LNAV MDA	1700-1	546 (600-1)	1700-1 3/8 546 (600-1 3/8)	1700-1 3/4 546 (600-1 3/4)
CIRCLING	1720-1	562 (600-1)	1720-1 3/8 562 (600-1 3/8)	1760-2 602 (700-2)

REIL Rws 5, 23, 14 and 32
MIRL Rwy 5-23 and 14-32