

NDB GYG 359	APP CRS 142°	Rwy Idg TDZE Apt Elev	5005 1154 1158
-----------------------	------------------------	-----------------------------	---

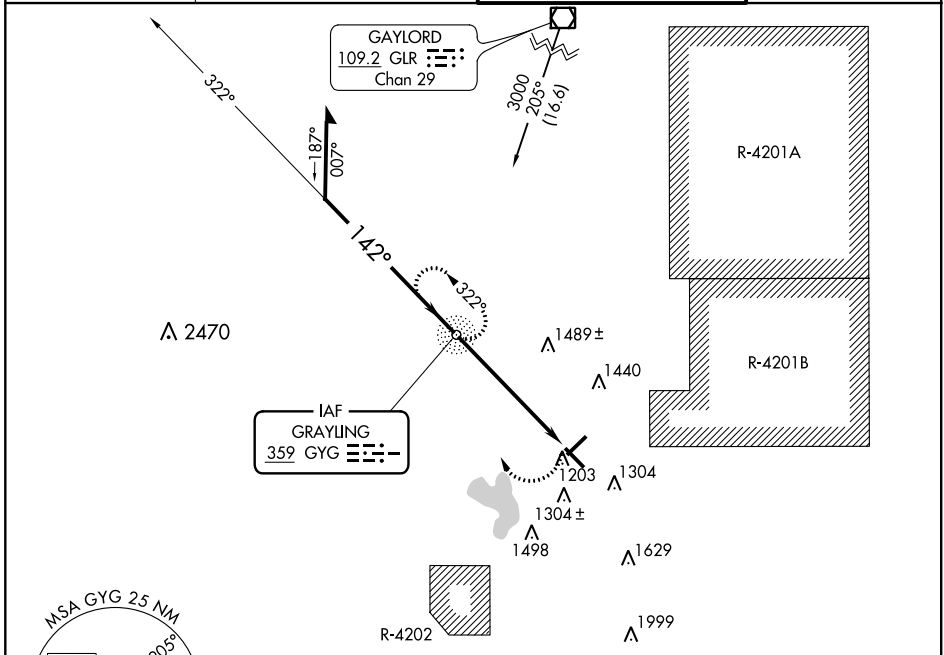
NDB RWY 14

GRAYLING AAF (GOV)

⚠ Circling Rwy 5, 23, 32 NA at night. Rwy 14 helicopter visibility reduction below 3/4 SM NA.
⚠ NA When local altimeter setting not received, use Houghton Lake altimeter setting and increase all MDAs 60 feet and visibility Cat B/C/D 1/2 SM.

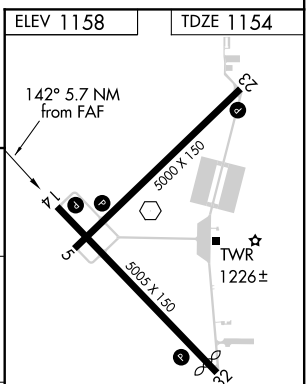
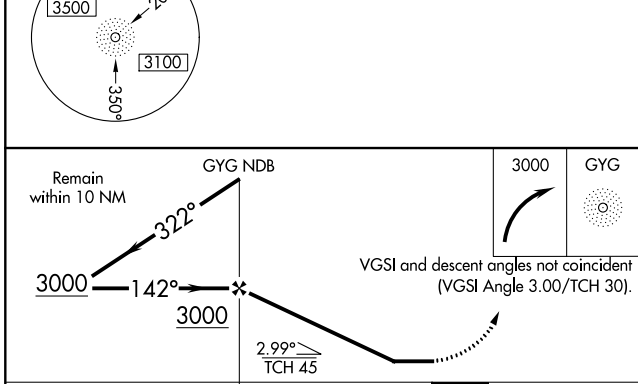
MISSED APPROACH:
Climbing right turn to 3000 direct GYG NDB and hold.

ATIS 119.075	MINNEAPOLIS CENTER 125.475 269.45	GRAYLING TOWER ★ 126.2 (CTAF) 0	GND CON 121.9
------------------------	---	---	-------------------------



EC-1, 31 JAN 2019 to 28 FEB 2019

EC-1, 31 JAN 2019 to 28 FEB 2019



CATEGORY	A		B		C		D	
	1880-1	726 (800-1)	726 (800-1)	726 (800-2)	1880-2	726 (800-2)	1880-2 1/4	726 (800-2 1/4)
S-14	1880-1	726 (800-1)	726 (800-1)	726 (800-2)	1880-2	726 (800-2)	1880-2 1/4	726 (800-2 1/4)
CIRCLING	1880-1	722 (800-1)	722 (800-1)	722 (800-2)	1880-2	722 (800-2)	1880-2 1/4	722 (800-2 1/4)

REIL Rwys 5, 23, 14 and 32
MIRL Rwy 5-23 and 14-32

FAF to MAP 5.7 NM					
Knots	60	90	120	150	180
Min:Sec	5:42	3:48	2:51	2:17	1:54