

LOC/DME I-XJX <b>109.15</b> Chan <b>28</b> (Y)	APP CRS <b>002°</b>	Rwy Idg TDZE Apt Elev	<b>4002</b> <b>620</b> <b>620</b>
--	------------------------	-----------------------------	---

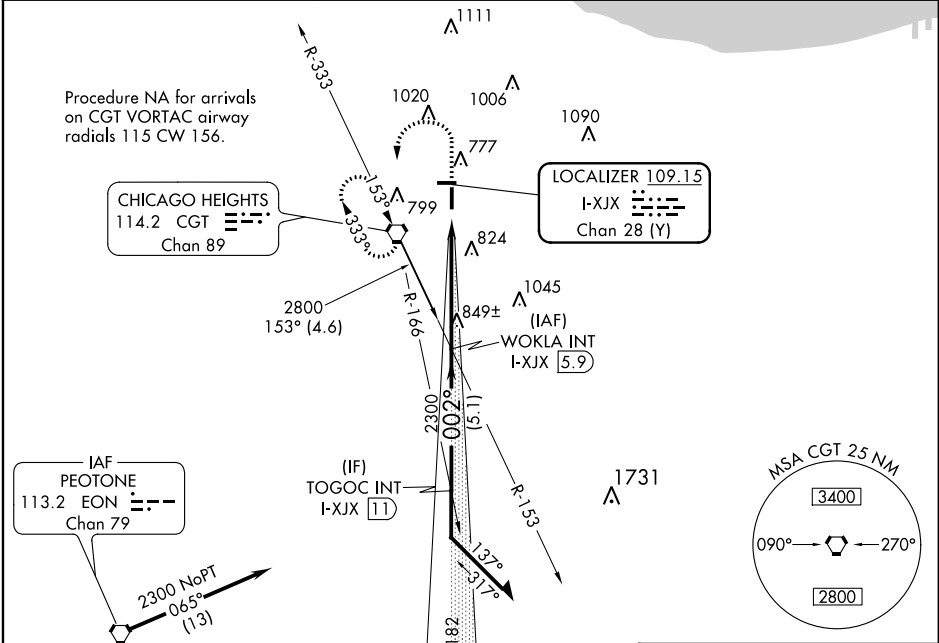
# LOC RWY 36

LANSING MUNI(IGQ)

**V** VDP NA when using Chicago Midway Intl altimeter setting.  
**Δ** NA When local altimeter setting not received, use Chicago Midway Intl altimeter setting and increase all MDAs 60 feet.  
 Circling Rwy 9 NA at night.

**MISSED APPROACH:** Climb to 1300 then climbing left turn to 2800 direct CGT VORTAC and hold, continue climb-in-hold to 2800.

AWOS-3 <b>119.275</b>	CHICAGO APP CON <b>128.2 285.6</b>	UNICOM <b>122.7</b> (CTAF) <b>0</b>
--------------------------	---------------------------------------	--



Procedure NA for arrivals on CGT VORTAC airway radials 115 CW 156.

CHICAGO HEIGHTS  
114.2 CGT  
Chan 89

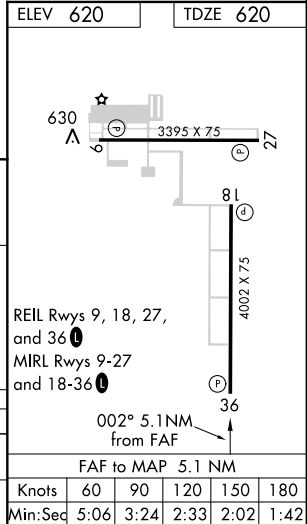
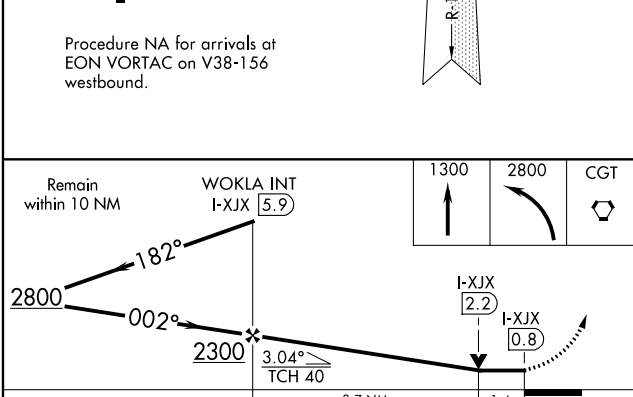
LOCALIZER 109.15  
I-XJX  
Chan 28 (Y)

IAF PEOTONE  
113.2 EON  
Chan 79

Procedure NA for arrivals at EON VORTAC on V38-156 westbound.

EC-3, 31 JAN 2019 to 28 FEB 2019

EC-3, 31 JAN 2019 to 28 FEB 2019



CATEGORY	A	B	C	D
S-36	1100-1 480 (500-1)		NA	
CIRCLING	1140-1 520 (600-1)		NA	