

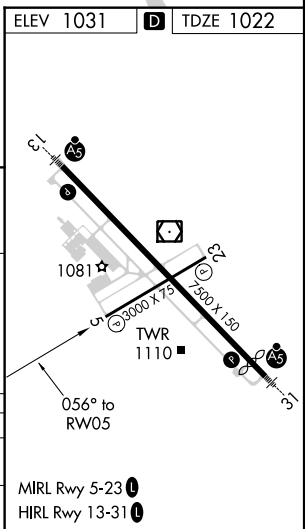
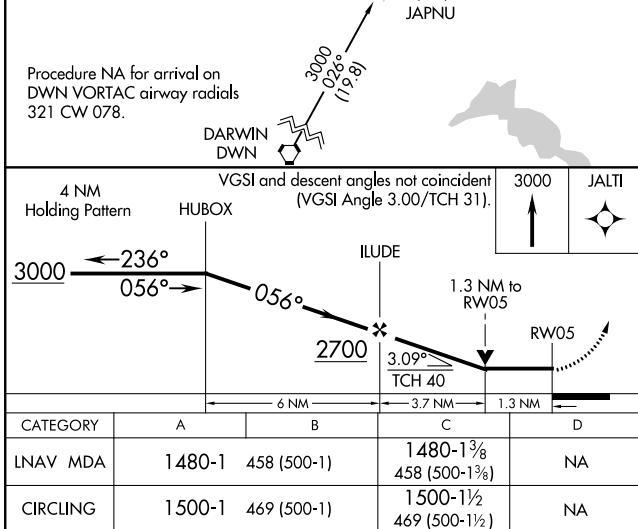
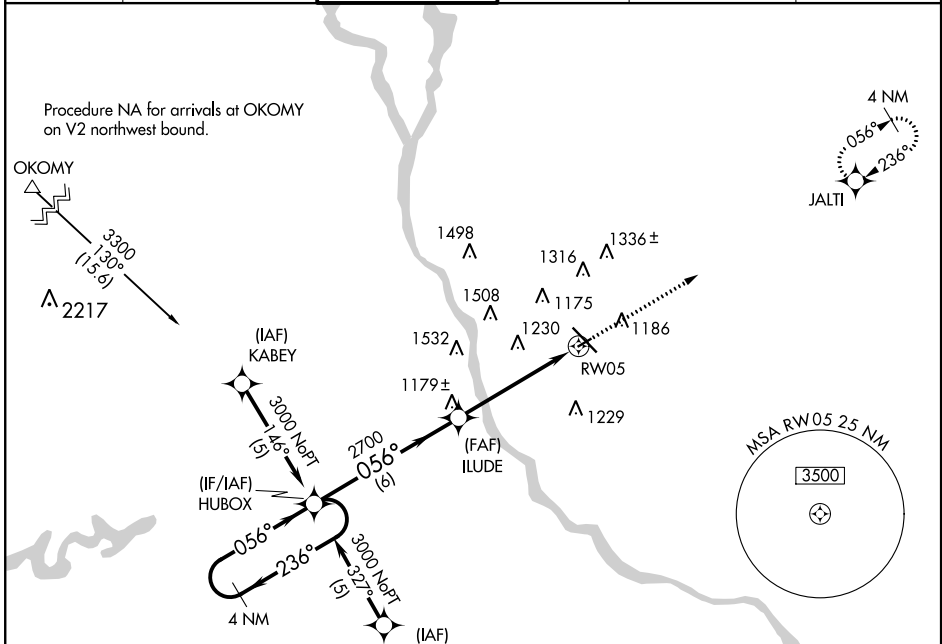
APP CRS	Rwy Idg	3000
056°	TDZE	1022
	Apt Elev	1031

RNAV (GPS) RWY 5

ST. CLOUD RGNL (STC)

▼ Rwy 5 helicopter visibility reduction below 3/4 SM NA. DME/DME RNP-0.3 NA. VDP NA
▲ when using Little Falls altimeter setting. When local altimeter setting not received, use Little Falls altimeter setting and increase all MDA 80 feet and LNAV Cat C visibility 1/8 SM.
 MISSED APPROACH: Climb to 3000 direct JALTI and hold.

ATIS 119.375	MINNEAPOLIS CENTER 121.05 397.9	ST. CLOUD TOWER ★ 118.25 (CTAF) 0	GND CON 123.75	PRINCETON RADIO 122.5	UNICOM 123.5
------------------------	---	---	--------------------------	---------------------------------	------------------------



NC-1, 31 JAN 2019 to 28 FEB 2019

NC-1, 31 JAN 2019 to 28 FEB 2019