


WAAS CH 82013 W13A	APP CRS 133°	Rwy Idg TDZE Apt Elev	7500 1031 1031
--	------------------------	-----------------------------	---

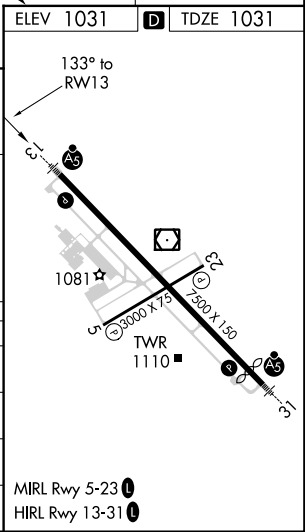
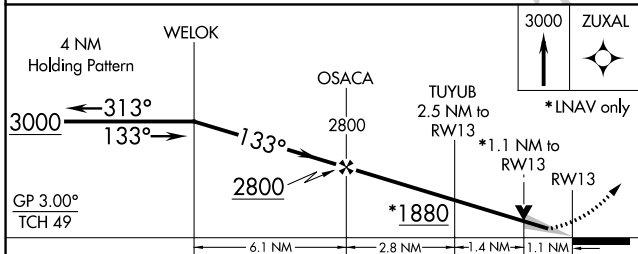
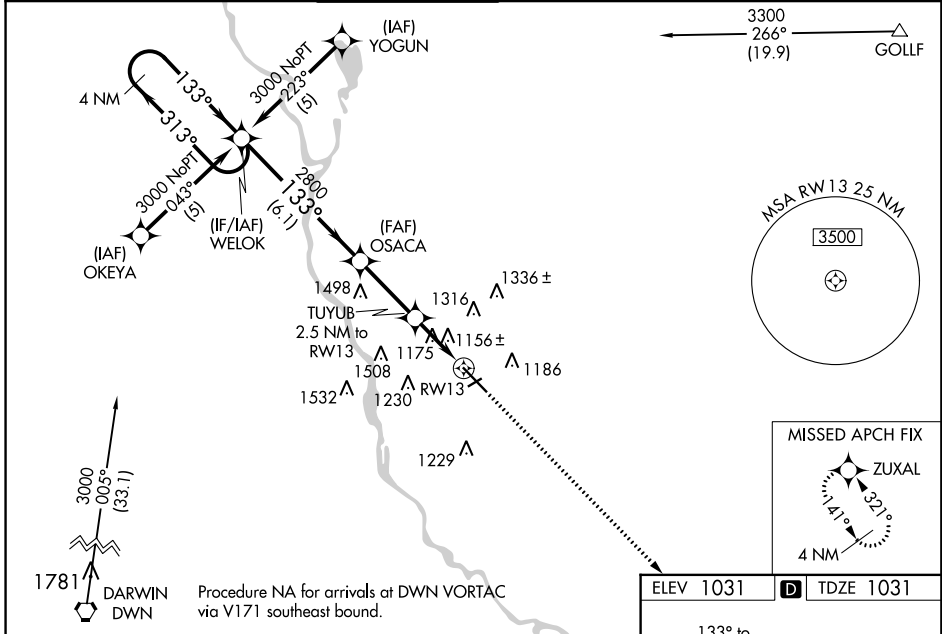
RNAV (GPS) RWY 13

ST. CLOUD RGNL (STC)

⚠ For uncompensated Baro-VNAV systems, LNAV/VNAV NA below -17°C (2°F) or above 47°C (116°F). DME/DME RNP-0.3 NA. VDP and Baro-VNAV NA when using Little Falls altimeter setting. When local altimeter setting not received, use Little Falls altimeter setting and increase all DA 76 feet and all MDA 80 feet. Increase LNAV/ VNAV visibility ¼ mile all Cats. Circling to Rwy 5-23 NA at night. For inoperative MALSRS, increase LNAV Cat D visibility ¼ mile. For inoperative MALSRS when using Little Falls altimeter setting, increase LPV all Cats visibility ½ mile.

MALSRS

MISSED APPROACH:
 Climb to 3000 direct ZUXAL and hold.

ATIS 119.375	MINNEAPOLIS CENTER 121.05 397.9	ST. CLOUD TOWER * 118.25 (CTAF) 0	GND CON 123.75	PRINCETON RADIO 122.5	UNICOM 123.5
------------------------	---	--	--------------------------	---------------------------------	------------------------



CATEGORY	A	B	C	D
LPV DA		1231-½	200 (200-½)	
LNAV/VNAV DA		1455-1	424 (500-1)	
LNAV MDA	1440-½	409 (500-½)	1440-¾ 409 (500-¾)	1440-1 409 (500-1)
CIRCLING	1500-1	469 (500-1)	1500-1½ 469 (500-1½)	1620-2 589 (600-2)

NC-1, 31 JAN 2019 to 28 FEB 2019

NC-1, 31 JAN 2019 to 28 FEB 2019