

# ILS or LOC/DME RWY 13

ST. CLOUD RGNL (STC)

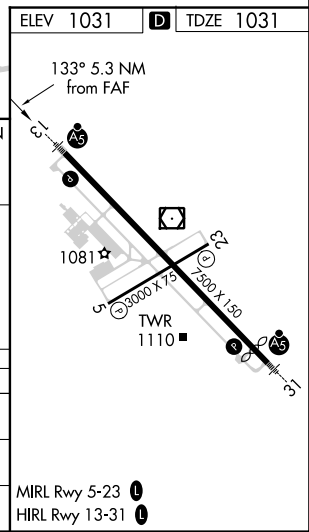
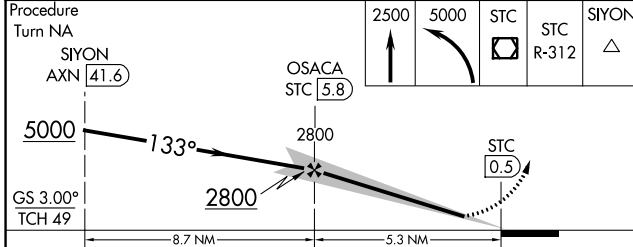
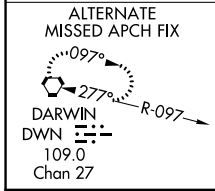
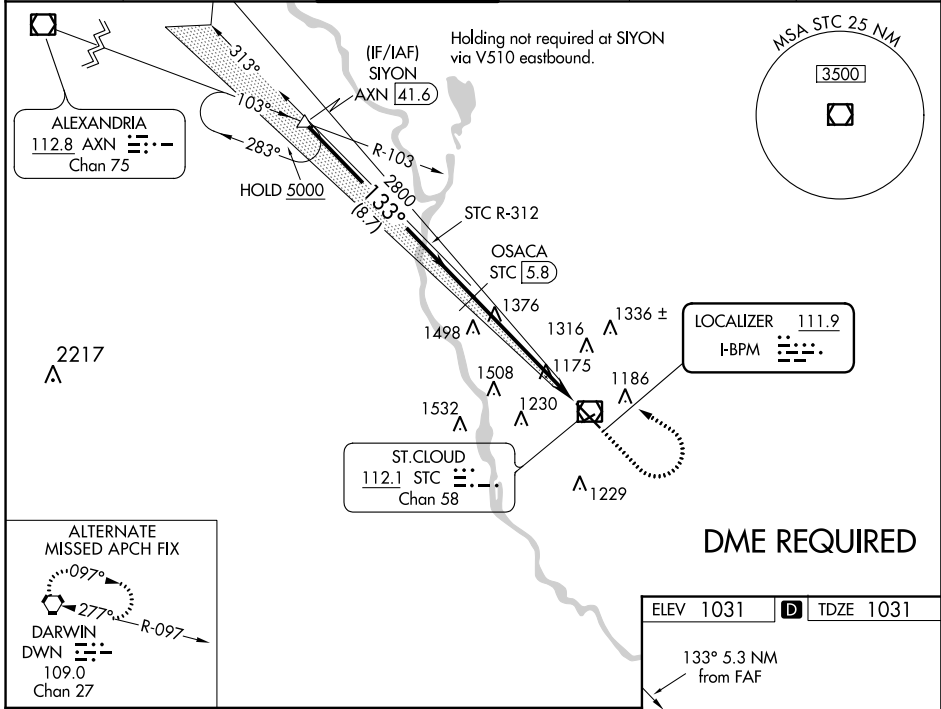
LOC I-BPM <b>111.9</b>	APP CRS <b>133°</b>	Rwy Idg TDZE Apt Elev	<b>7500</b> <b>1031</b> <b>1031</b>
---------------------------	------------------------	-----------------------------	---

**⚠** Circling to Rwy 5-23 NA at night. DME from STC VOR/DME. Simultaneous reception of I-BPM and STC DME required. DME required. When local altimeter setting not received, use Little Falls altimeter setting and increase DA to 1307 and all MDA's 80 feet. Increase S-LOC 13 Cats C/D and Circling Cats C/D visibility 1/4 mile. For inoperative MALSRL when using Little Falls altimeter setting, increase S-ILS 13 all Cats visibility 1/2 mile.

**MALSRL**  
A5

**MISSED APPROACH:** Climb to 2500 then climbing left turn to 5000 direct STC VOR/DME and via STC VOR/DME R-312 to SIYON/AXN VOR/DME 41.6 DME and hold.

ATIS <b>119.375</b>	MINNEAPOLIS CENTER <b>121.05 397.9</b>	ST. CLOUD TOWER ★ <b>118.25 (CTAF) 0</b>	GND CON <b>123.75</b>	PRINCETON RADIO <b>122.5</b>	UNICOM <b>123.5</b>
------------------------	---	---	--------------------------	---------------------------------	------------------------



CATEGORY	A	B	C	D
S-ILS 13	1231-1/2		200 (200-1/2)	
S-LOC 13	1680-1/2	649 (700-1/2)	1680-1 1/4 649 (700-1 1/4)	1680-1 1/2 649 (700-1 1/2)
CIRCLING	1680-1	649 (700-1)	1680-1 3/4 649 (700-1 3/4)	1680-2 649 (700-2)

NC-1, 31 JAN 2019 to 28 FEB 2019

NC-1, 31 JAN 2019 to 28 FEB 2019