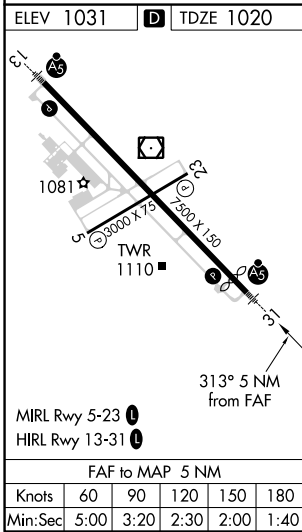
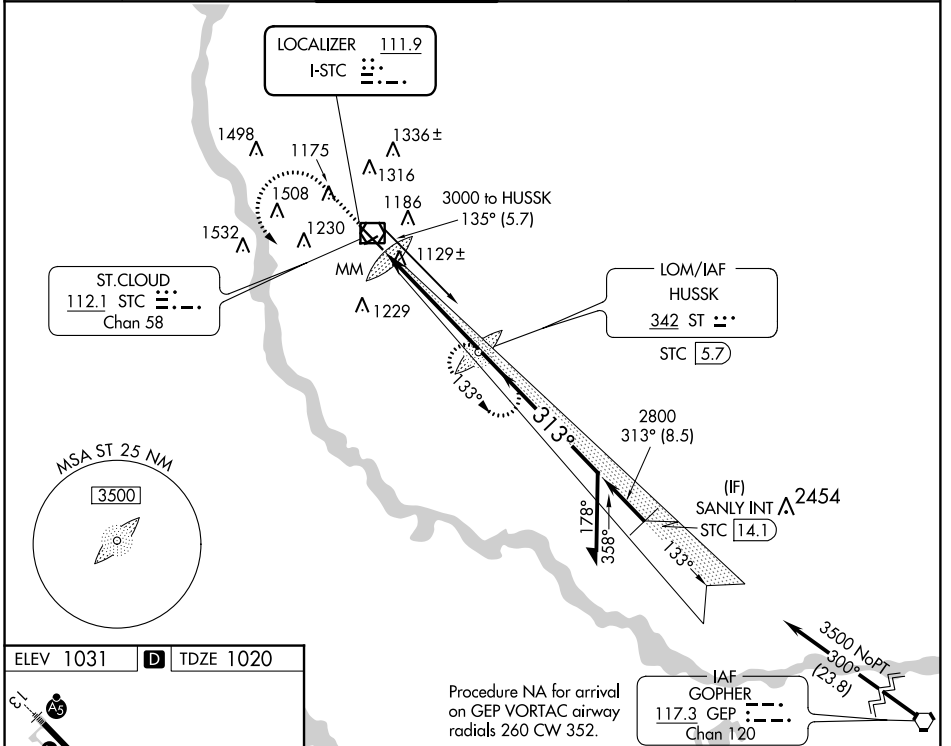


LOC I- <b>STC</b>	APP CRS <b>313°</b>	Rwy Idg <b>7000</b>
<b>111.9</b>		TDZE <b>1020</b>
		Apt Elev <b>1031</b>

# ILS or LOC RWY 31

ST. CLOUD RGNL (STC)

<p><b>V</b> VDP NA when using Little Falls altimeter setting. When local altimeter setting not received, use Little Falls altimeter setting and increase all DA 76 feet and all MDA 80 feet and increase S-LOC 31 Cat C/D visibility 1/8 SM. ADF Required.</p>			<p><b>MALSR</b></p>	<p><b>MISSED APPROACH:</b> Climb to 3000 then left turn direct HUSSK LOM and hold.</p>	
<p><b>ATIS</b> <b>119.375</b></p>	<p><b>MINNEAPOLIS CENTER</b> <b>121.05 397.9</b></p>	<p><b>ST. CLOUD TOWER *</b> <b>118.25 (CTAF) 0</b></p>	<p><b>GND CON</b> <b>123.75</b></p>	<p><b>PRINCETON RADIO</b> <b>122.5</b></p>	<p><b>UNICOM</b> <b>123.5</b></p>



NC-1, 31 JAN 2019 to 28 FEB 2019

NC-1, 31 JAN 2019 to 28 FEB 2019