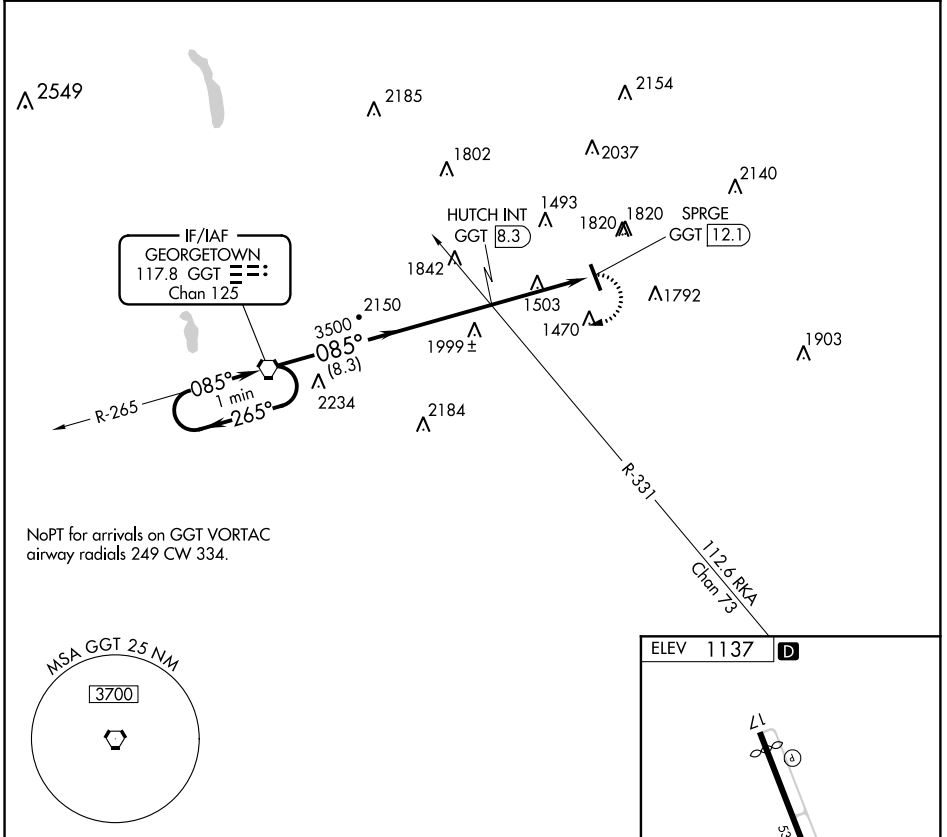


VORTAC GGT <b>117.8</b> Chan <b>125</b>	APP CRS <b>085°</b>	Rwy Idg TDZE Apt Elev <b>N/A</b> <b>N/A</b> <b>1137</b>
---	------------------------	--

**VOR-A**  
HAMILTON MUNI (VGC)

<p><b>▽</b> Helicopter visibility reduction below 3/4 SM NA. <b>▲ NA</b> When local altimeter setting not received; use Syracuse altimeter setting and increase all MDA 180 feet.</p>		<p>MISSED APPROACH: Climb to 2600 then climbing right turn to 4000 direct GGT VORTAC and hold.</p>	
AWOS-3P <b>119.425</b>	SYRACUSE APP CON <b>126.125 269.125</b>	UNICOM <b>123.0 (CTAF)</b>	<b>122.7 0</b>



NE-2, 31 JAN 2019 to 28 FEB 2019

NE-2, 31 JAN 2019 to 28 FEB 2019

One Minute Holding Pattern	GGT VORTAC		2600	4000	GGT
	4000 ← 265°	→ 085°	085°	HUTCH INT GGT 8.3	SPRGE GGT 12.1
	8.3 NM		3.8 NM		
CATEGORY	A	B	C	D	FAF to MAP 3.8 NM
CIRCLING	2260-1 1/4	2260-1 1/2	2260-3	NA	Knots 60 90 120 150 180
	1123 (1200-1 1/4)	1123 (1200-1 1/2)	1123 (1200-3)		Min:Sec 3:48 2:32 1:54 1:31 1:16