

APP CRS 011°	Rwy Idg TDZE Apt Elev	N/A N/A 5
------------------------	-----------------------------	--------------------------------------

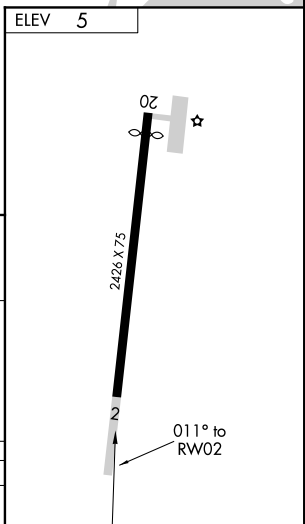
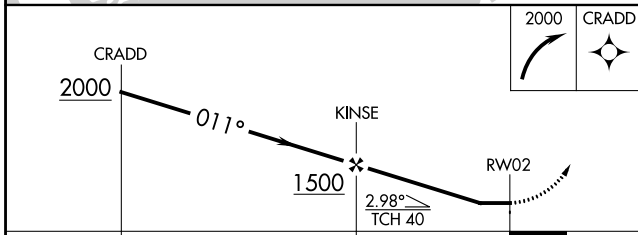
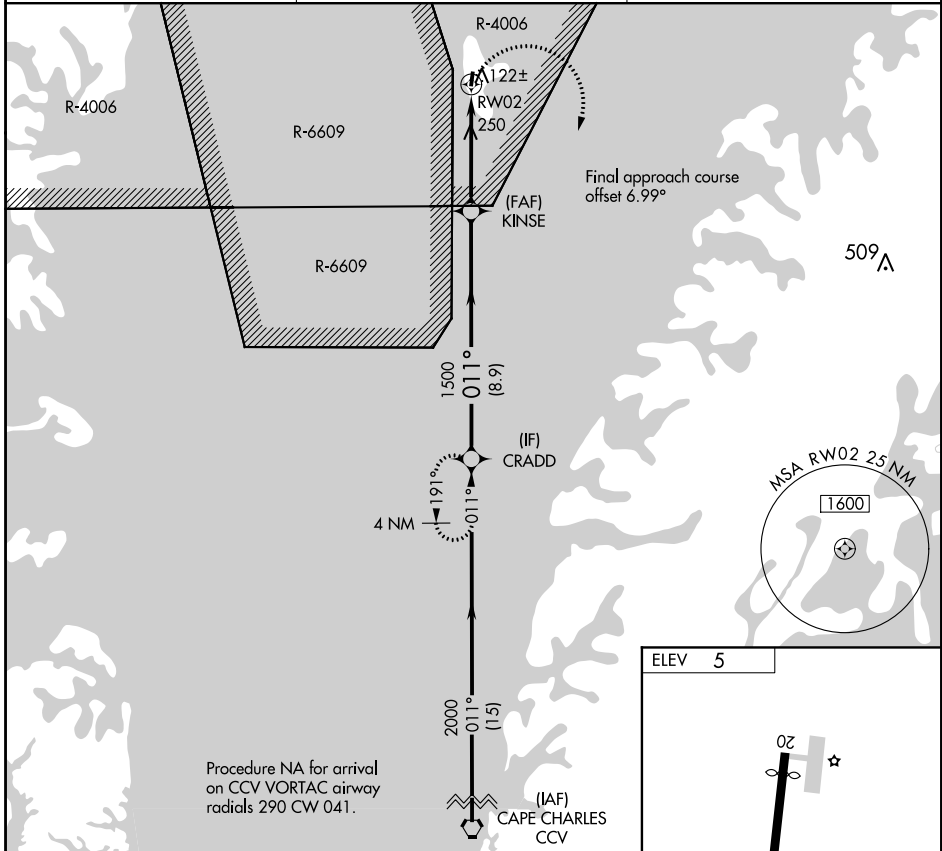
RNAV (GPS)-B

TANGIER ISLAND (TGI)

⚠ DME/DME RNP-0.3 NA. When local altimeter setting not received, use Patuxent River NAS altimeter setting and increase all MDAs 100 feet. Specific clearance from Patuxent App Con required before proceeding northbound from CRADD. Approach is within R-6609 and underlies R-4006. Procedure NA at night.

MISSED APPROACH:
Climbing right turn to 2000
direct CRADD and hold.

AWOS-3 119.8	PATUXENT APP CON ★ 121.0 250.3	UNICOM 122.8 (CTAF) 0
------------------------	--	---------------------------------



CATEGORY	A	B	C	D
C CIRCLING	560-1	555 (600-1)	NA	

NE-3, 31 JAN 2019 to 28 FEB 2019

NE-3, 31 JAN 2019 to 28 FEB 2019