

APP CRS	Rwy Idg	4000
215°	TDZE	594
	Apl Elev	594

RNAV (GPS) RWY 21

LOGAN COUNTY (AAA)

RNP APCH.

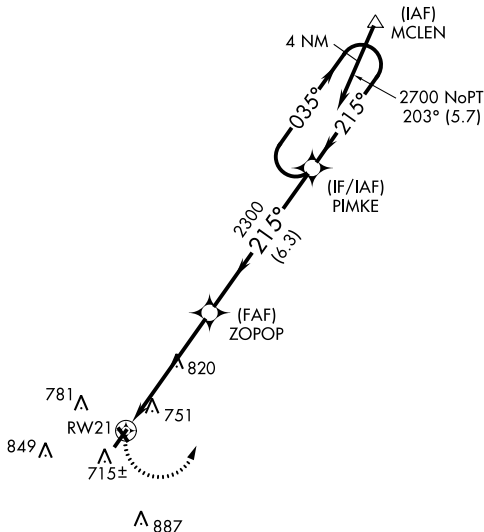
- ▼ Circling NA to Rwys 14 and 32. If local altimeter setting not received, use Springfield, IL altimeter setting and increase all MDAs 60 feet.
- ▲ VDP NA with Springfield, IL altimeter setting. Rwy 21 helicopter visibility reduction below 3/4 SM NA.

MISSED APPROACH: Climbing left turn to 2700 direct PIMKE and hold.

AWOS-3 118.775	SPRINGFIELD APP CON ★ 126.15 323.0	UNICOM 122.8 (CTAF) 0
--------------------------	--	---------------------------------

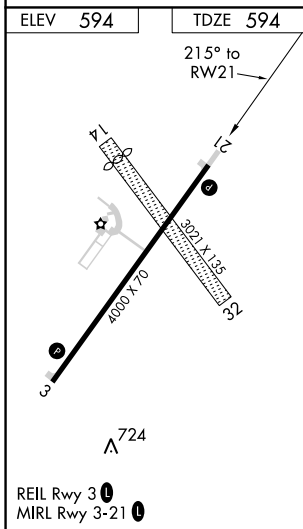
Procedure NA for arrivals at MCLEN via V9-69 northeast bound.

1301 ▲



EC-3, 31 JAN 2019 to 28 FEB 2019

EC-3, 31 JAN 2019 to 28 FEB 2019



2700	PIMKE	VGSI and descent angles not coincident (VGSI Angle 3.00/TCH 25).	4 NM Holding Pattern	
		ZOPOP	2700	
		2300	2700	
CATEGORY	A	B	C	D
LNAV MDA	1080-1	486 (500-1)	1080-1¼ 486 (500-1¼)	1080-1½ 486 (500-1½)
CIRCLING	1140-1	546 (600-1)	1140-1½ 546 (600-1½)	1160-2 566 (600-2)