

WAAS CH <b>42820</b> <b>W08A</b>	APP CRS <b>077°</b>	Rwy Idg TDZE Apt Elev	<b>7647</b> <b>1274</b> <b>1277</b>
--	------------------------	-----------------------------	---

# RNAV (GPS) RWY 8

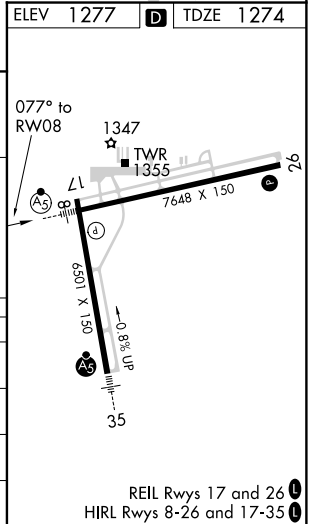
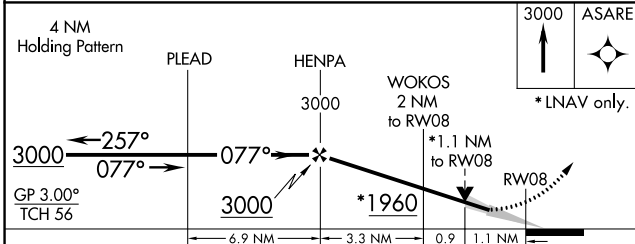
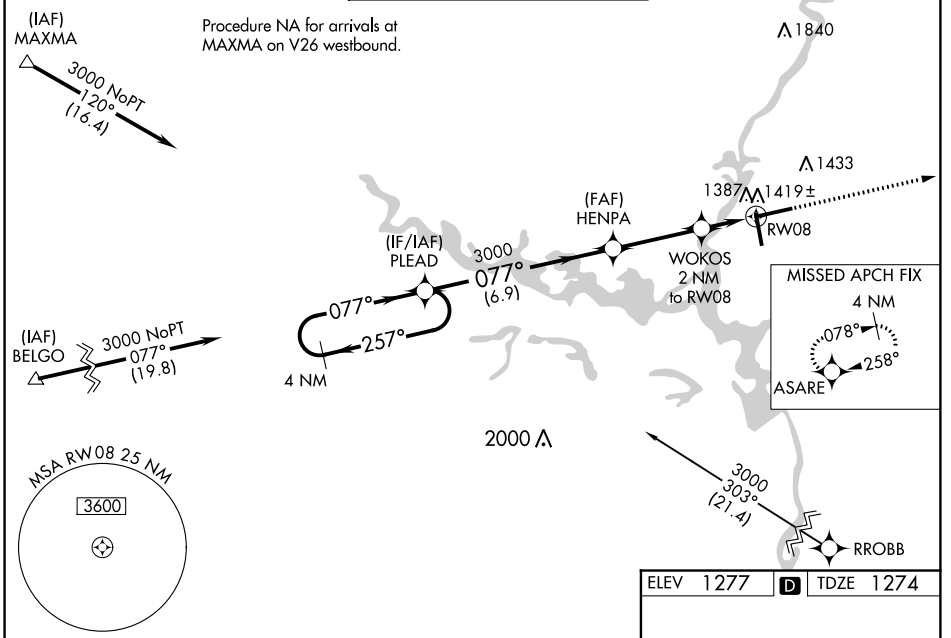
CENTRAL WISCONSIN(CWA)

For uncompensated Baro-VNAV systems, LNAV/VNAV NA below -17°C (2°F) or above 54°C (130°F). DME/DME RNP-0.3 NA.

MALSR

MISSED APPROACH:  
Climb to 3000 direct ASARE and hold.

ATIS <b>127.45</b>	MINNEAPOLIS CENTER <b>124.4 317.7</b>	CWA TOWER★ <b>119.75</b> (CTAF) <b>0 360.7</b>	GND CON <b>121.9 360.7</b>	UNICOM <b>122.95</b>
-----------------------	--	---	-------------------------------	-------------------------



CATEGORY	A	B	C	D
LPV DA		1474-½	200 (200-½)	
LNAV/VNAV DA		1601-⅝	327 (400-⅝)	
LNAV MDA	1680-½	406 (500-½)	1680-¾	406 (500-¾)
CIRCLING	1740-1	463 (500-1)	1740-1½ 463 (500-1½)	1840-2 563 (600-2)

EC-3, 31 JAN 2019 to 28 FEB 2019

EC-3, 31 JAN 2019 to 28 FEB 2019