

WAAS CH 58220 W26A	APP CRS 257°	Rwy Idg 7647 TDZE 1260 Apt Elev 1277
--	------------------------	---

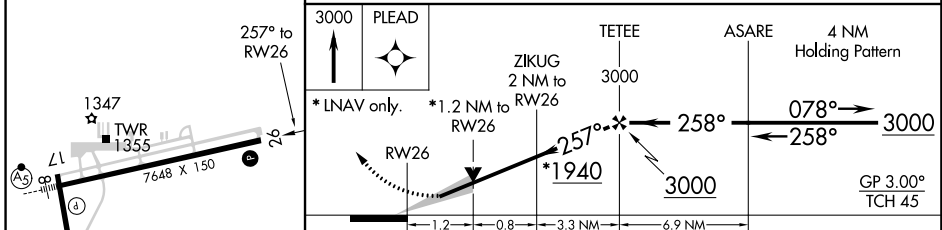
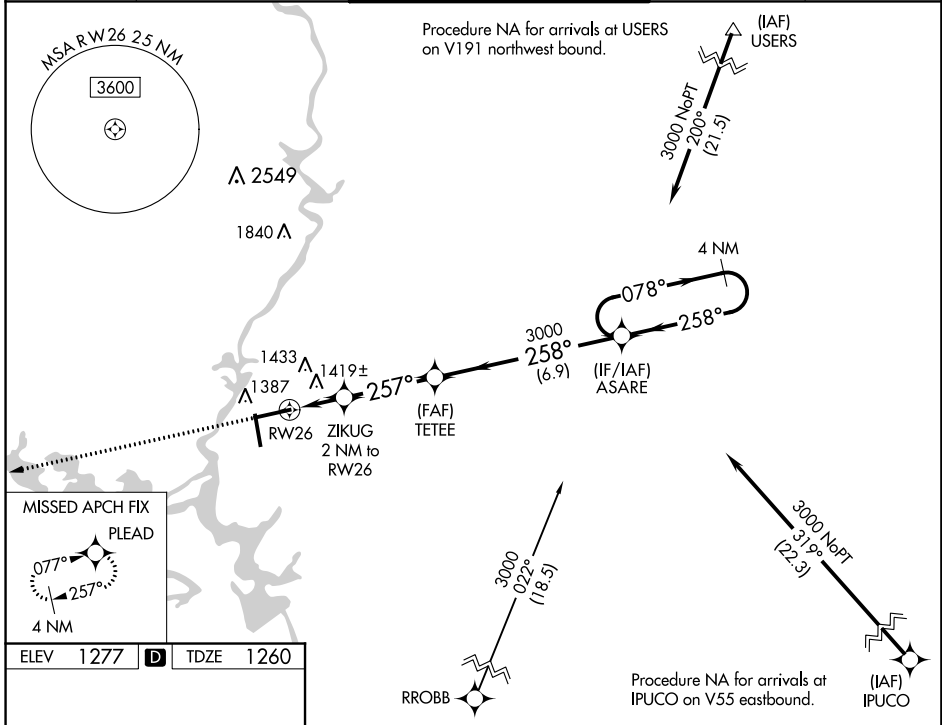
RNAV (GPS) RWY 26

CENTRAL WISCONSIN (CWA)

▽ For uncompensated Baro-VNAV systems, LNAV/VNAV NA below -17°C (2°F) or above 54°C (130°F).
DME/DME RNP-0.3 NA.

MISSED APPROACH: Climb to 3000 direct PLEAD and hold.

ATIS 127.45	MINNEAPOLIS CENTER 124.4 317.7	CWA TOWER* 119.75 (CTAF) 0 360.7	GND CON 121.9 360.7	UNICOM 122.95
-----------------------	--	--	-------------------------------	-------------------------



CATEGORY	A	B	C	D
LPV DA		1510-3/4	250 (300-3/4)	
LNAV/VNAV DA		1730-1 5/8	470 (500-1 5/8)	
LNAV MDA	1680-1	420 (500-1)	1680-1 1/8	420 (500-1 1/8)
C CIRCLING	1740-1	463 (500-1)	1740-1 1/2	1840-2
			463 (500-1 1/2)	563 (600-2)

EC-3, 31 JAN 2019 to 28 FEB 2019

EC-3, 31 JAN 2019 to 28 FEB 2019