

WAAS CH <b>53321</b> <b>W17A</b>	APP CRS <b>170°</b>	Rwy Idg TDZE Apt Elev	<b>6501</b> <b>1277</b> <b>1277</b>
--	------------------------	-----------------------------	---

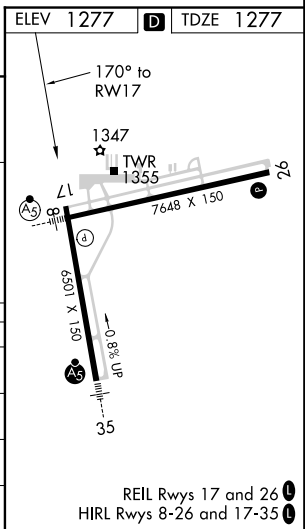
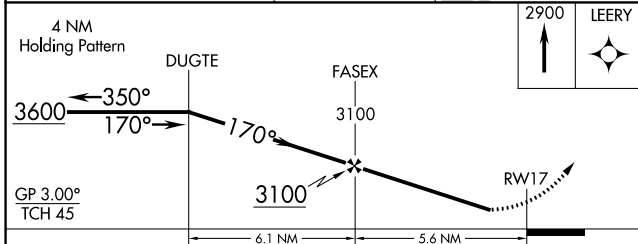
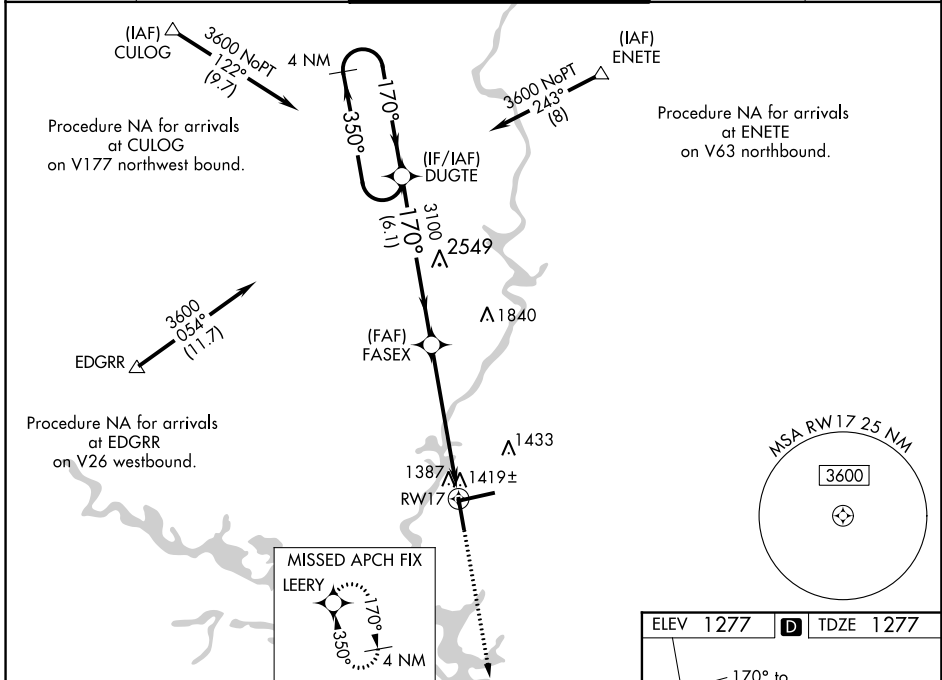
# RNAV (GPS) RWY 17

CENTRAL WISCONSIN (CWA)

**⚠** Baro-VNAV NA when using Wausau altimeter setting. For uncompensated Baro-VNAV systems, LNAV/VNAV NA below -17°C (2°F) or above 35°C (95°F). DME/DME RNP-0.3 NA. Helicopter visibility reduction below 3/4 SM NA. When local altimeter setting not received, use Wausau altimeter setting and increase all DA 32 feet and all MDA 40 feet, and increase LNAV Cats C and D visibility 1/4 mile.

**MISSSED APPROACH:**  
Climb to 2900 direct LEERY and hold.

ATIS <b>127.45</b>	MINNEAPOLIS CENTER <b>124.4 317.7</b>	CWA TOWER ★ <b>119.75 (CTAF) 360.7</b>	GND CON <b>121.9 360.7</b>	UNICOM <b>122.95</b>
-----------------------	--	---	-------------------------------	-------------------------



CATEGORY	A	B	C	D
LPV DA		1534-1	257 (300-1)	
LNAV/VNAV DA		1600-1 1/8	323 (400-1 1/8)	
LNAV MDA	1680-1	403 (500-1)	1680-1 1/8	403 (500-1 1/8)
CIRCLING	1740-1	463 (500-1)	1740-1 1/2	1840-2 563 (600-2)

EC-3, 31 JAN 2019 to 28 FEB 2019

EC-3, 31 JAN 2019 to 28 FEB 2019