

TAYLOR TWO ARRIVAL (TAY.TAY2)

AL-5570 (FAA)

JACKSONVILLE, FLORIDA

SE-3, 31 JAN 2019 to 28 FEB 2019

SEMINOLE TRANSITION (SZW.TAY2): From over SZW VORTAC via SZW R-089 and TAY R-275 to TAY VORTAC. Thence. . . .

. . . . From over TAY VORTAC via TAY R-070 to CROKR INT, thence to the CRG VORTAC via CRG R-301. Expect radar vectors to final approach course after CROKR INT.

SEMINOLE
117.5 SZW
Chen 122
N30° 33.37' - W84° 22.44'
L-21-22, H-8-12

TAYLOR
112.9 TAY
Chen 7.6
N30° 30.28' - W82° 33.17'

ZOOSS
N30° 32.11' - W83° 31.02'
TURBOJET VERTICAL NAVIGATION
PLANNING INFORMATION
Expect clearance to cross at FL240.

MULET
N30° 34.58' - W82° 21.44'
TURBOJET VERTICAL NAVIGATION
PLANNING INFORMATION
Expect clearance to cross at 11000'.

CRAIG
114.5 CRG
Chen 92
N30° 20.33' - W81° 30.60'

JACKSONVILLE APP CON
127.0 292.15
CECIL ATIS
125.275
CRAIG MUNI ATIS
125.4
JACKSONVILLE INTL D-ATIS
125.85
JACKSONVILLE NAS ATIS
290.425
MAYPORT NS ATIS ★
236.775
FERNANDINA BEACH AWOS-3
118.075

FERNANDINA BEACH
MUNI

MAYPORT NS
(ADM DAVID L
MCDONALD FIELD)

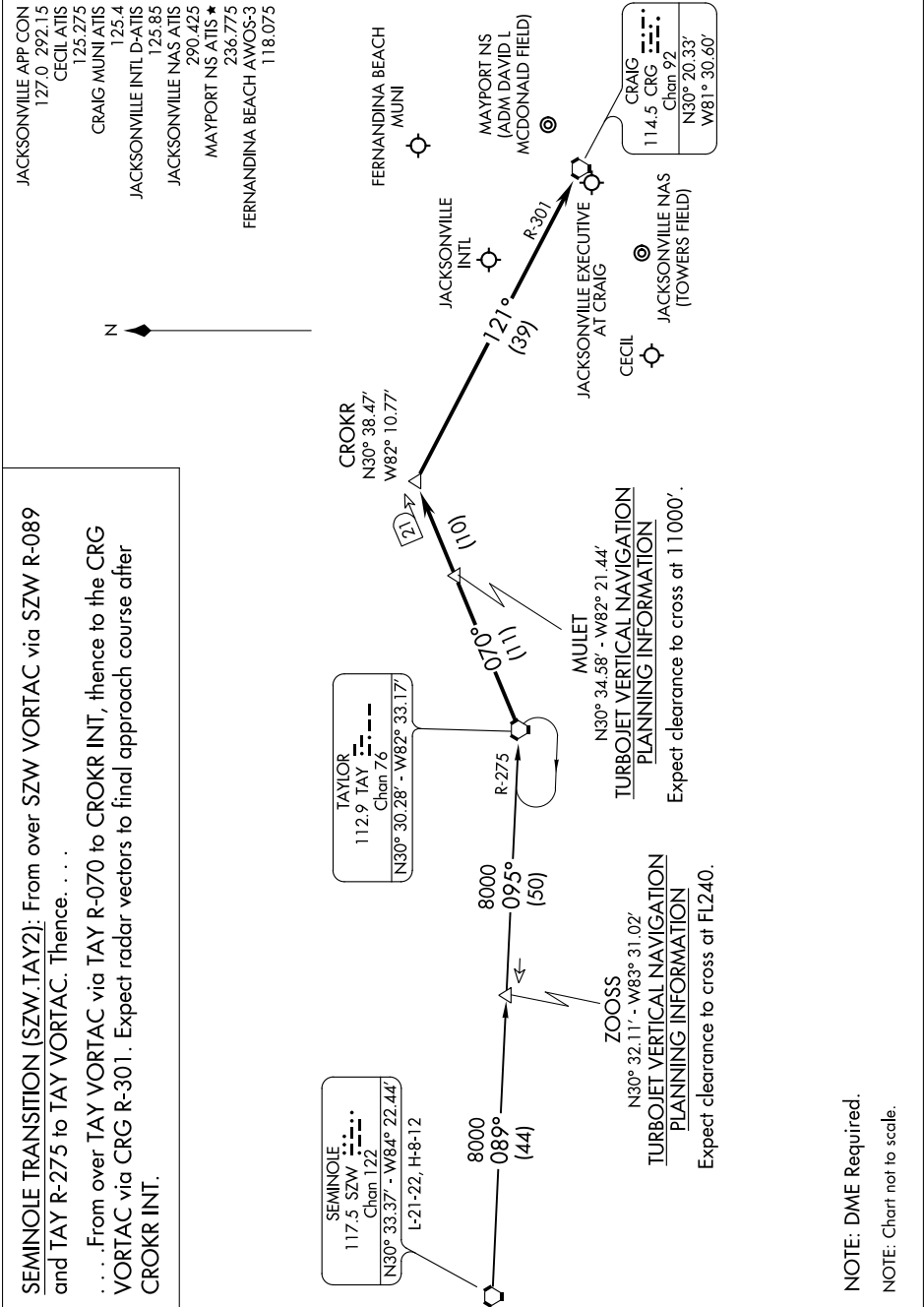
JACKSONVILLE
INTL

JACKSONVILLE EXECUTIVE
AT CRAIG

CECIL
JACKSONVILLE NAS
(TOWERS FIELD)



CROKR
N30° 38.47' - W82° 10.77'



TAYLOR TWO ARRIVAL (TAY.TAY2)

JACKSONVILLE, FLORIDA

SE-3, 31 JAN 2019 to 28 FEB 2019