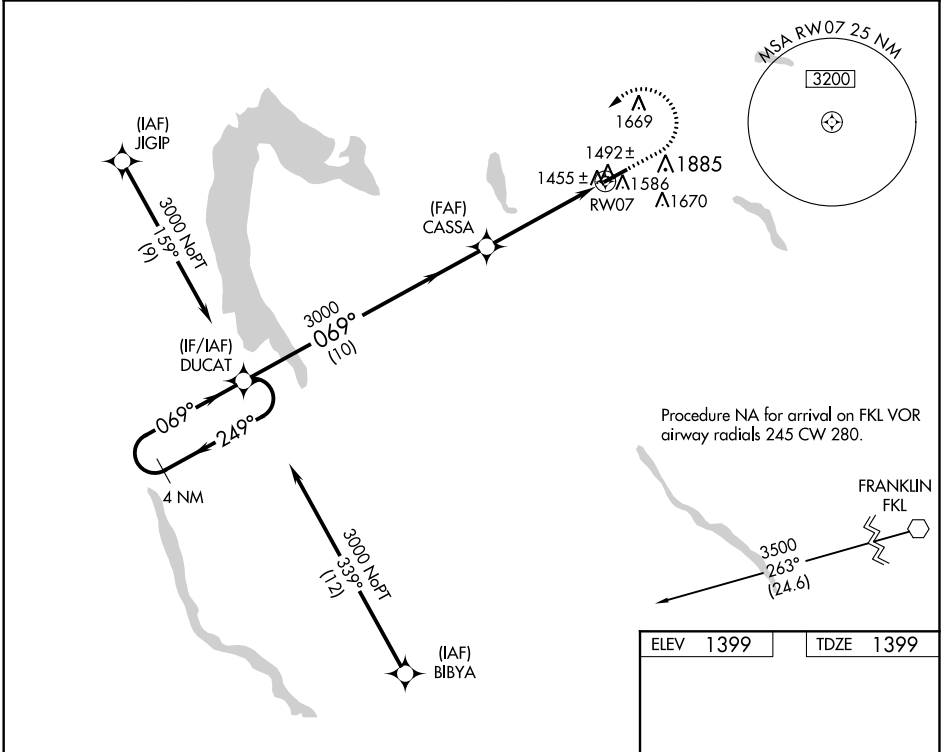


| | | | |
|--|------------------------|---|-------------|
| WAAS CH 53724 W07A | APP CRS 069° | Rwy Idg TDZE 1399 Apt Elev 1399 | 5001 |
|--|------------------------|---|-------------|

RNAV (GPS) RWY 7

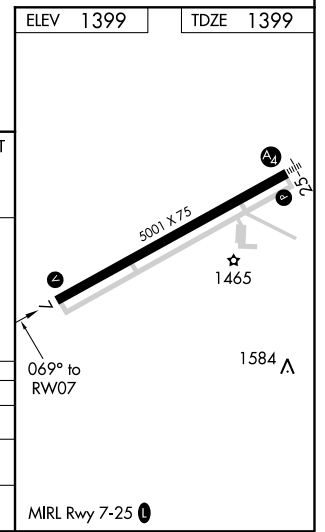
PORT MEADVILLE (GKJ)

| | | | |
|---|--|---|---|
| RNP APCH. | | MISSED APPROACH: Climb to 1900 then climbing left turn to 3100 direct DUCAT and hold. | |
| ▼ ▲ Rwy 7 helicopter visibility reduction below 3/4 SM NA. | | ASOS 121.425 | YOUNGSTOWN APP CON * 133.95 322.3 |
| | | CLNC DEL 124.95 | UNICOM 123.0 (CTAF) 0 |



NE-4, 31 JAN 2019 to 28 FEB 2019

NE-4, 31 JAN 2019 to 28 FEB 2019



| | | | | | |
|----------------------|-----------------------|-------------------------------|-------------------------------|-------------------------------|--------------|
| 4 NM Holding Pattern | DUCAT | CASSA | 1900 | 3100 | DUCAT |
| | 3000 ← 249° | → 069° | 3000 | 1 NM to RWY 7 | 3.00° TCH 58 |
| 10 NM | | 3.9 NM | 1 NM | | |
| CATEGORY | A | B | C | D | |
| LP MDA | 1760-1 | | 361 (400-1) | | |
| LNVA MDA | 1860-1 | 461 (500-1) | 1860-1 3/8 | 461 (500-1 3/8) | |
| CIRCLING | 1900-1 501 (600-1) | 2240-1 1/4 841 (900-1 1/4) | 2240-2 1/2 841 (900-2 1/2) | 2240-2 3/4 841 (900-2 3/4) | |