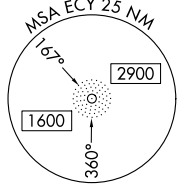
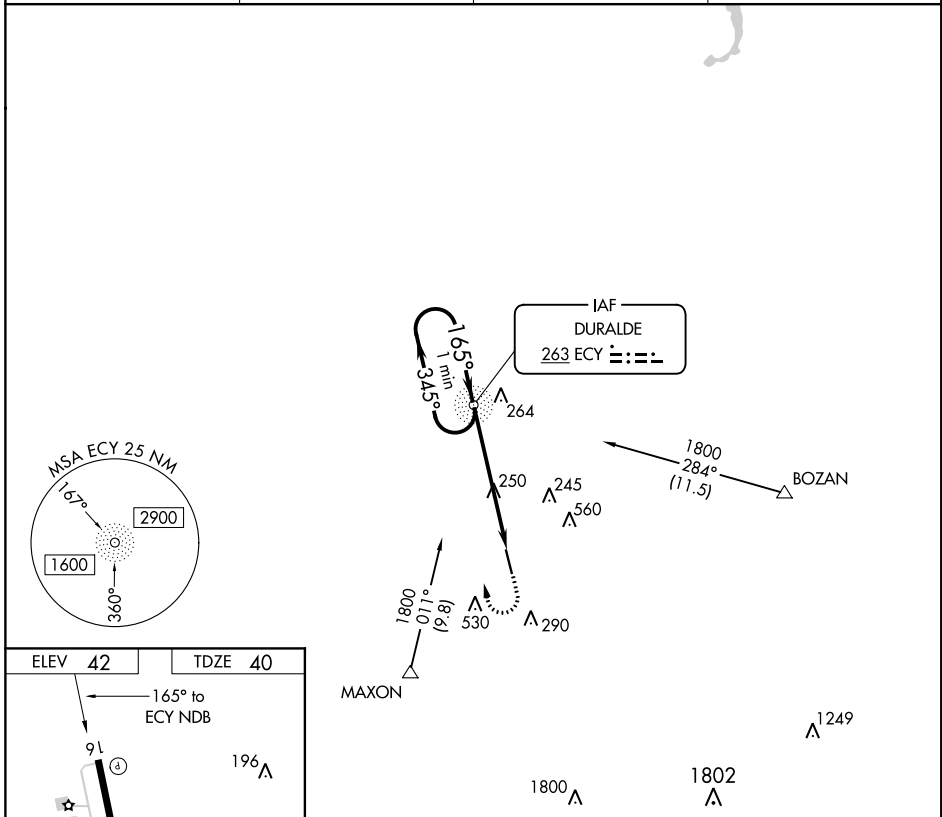


NDB EGY <b>263</b>	APP CRS <b>165°</b>	Rwy Idg TDZE Apt Elev	<b>5001</b> <b>40</b> <b>42</b>
-----------------------	------------------------	-----------------------------	---------------------------------------

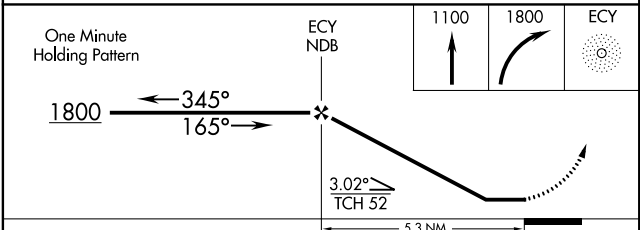
# NDB RWY 16

EUNICE (4R7)

<p><b>▽</b> Use Lafayette Rgnl/Paul Fournet Field altimeter setting.  <b>▲ NA</b> Procedure NA at night. Rwy 16 helicopter visibility reduction below 1 SM NA.</p>	<p>MISSED APPROACH: Climb to 1100 then climbing right turn to 1800 direct EGY NDB and hold.</p>		
LAFAYETTE RGNL/PAUL FOURNET FIELD ASOS <b>134.05</b>	LAFAYETTE APP CON ★ <b>128.7 268.7</b>	GCO <b>135.075</b>	UNICOM <b>122.8 (CTAF)</b>



ELEV 42	TDZE 40
<p>165° to EGY NDB</p>	
<p>MIRL Rwy 16-34 REIL Rwy 16 and 34</p>	
<p>FAF to MAP 5.3 NM</p>	
Knots	60 90 120 150 180
Min:Sec	5:18 3:32 2:39 2:07 1:46



CATEGORY	A	B	C	D
S-16	640-1	600 (600-1)	640-1 3/4 600 (600-1 3/4)	NA
CIRCLING	640-1	598 (600-1)	640-1 3/4 598 (600-1 3/4)	NA

SC-4, 31 JAN 2019 to 28 FEB 2019

SC-4, 31 JAN 2019 to 28 FEB 2019