

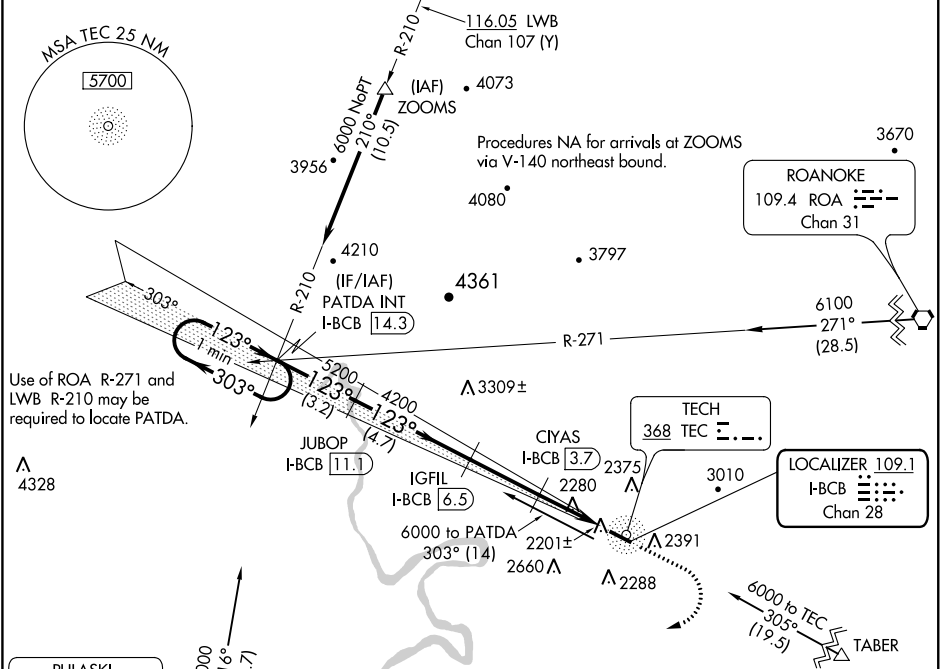
LOC/DME I-BCB	APP CRS	Rwy Idg	4539
109.1	123°	TDZE	2113
Chan 28		Apt Elev	2132

LOC/DME RWY 12

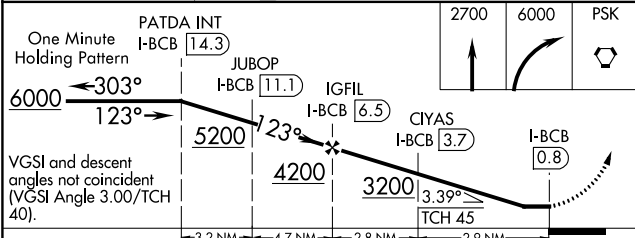
VIRGINIA TECH/MONTGOMERY EXECUTIVE (BCB)

<p>▼ Inoperative table does not apply.</p> <p>▲ NA When VGSI inop, procedure NA at night. Helicopter visibility reduction below 1 SM NA.</p>	<p>ODALS</p>	<p>MISSED APPROACH: Climb to 2700 then climbing right turn to 6000 direct PSK VORTAC and hold.</p>
--	--------------	--

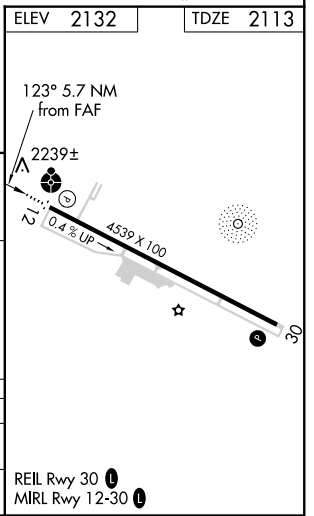
AWOS-3 133.325	ROANOKE APP CON 126.9 339.8	ROANOKE CLNC DEL 124.85	UNICOM 123.05 (CTAF)
--------------------------	---------------------------------------	-----------------------------------	--------------------------------



ELEV 2132	TDZE 2113
-----------	-----------



CATEGORY	A	B	C	D
S-12	2540-1	427 (500-1)	2540-1¼ 427 (500-1¼)	NA
C CIRCLING	2760-1 628 (700-1)	2800-1 668 (700-1)	2960-2½ 828 (900-2½)	NA



NE-3, 31 JAN 2019 to 28 FEB 2019

NE-3, 31 JAN 2019 to 28 FEB 2019

LOC/DME RWY 12