


VORTAC HYS <b>110.4</b> Chan 41	APP CRS <b>332°</b>	Rwy Idg TDZE Apt Elev <b>6501</b> <b>1994</b> <b>1999</b>
---------------------------------------	------------------------	--

# VOR RWY 34

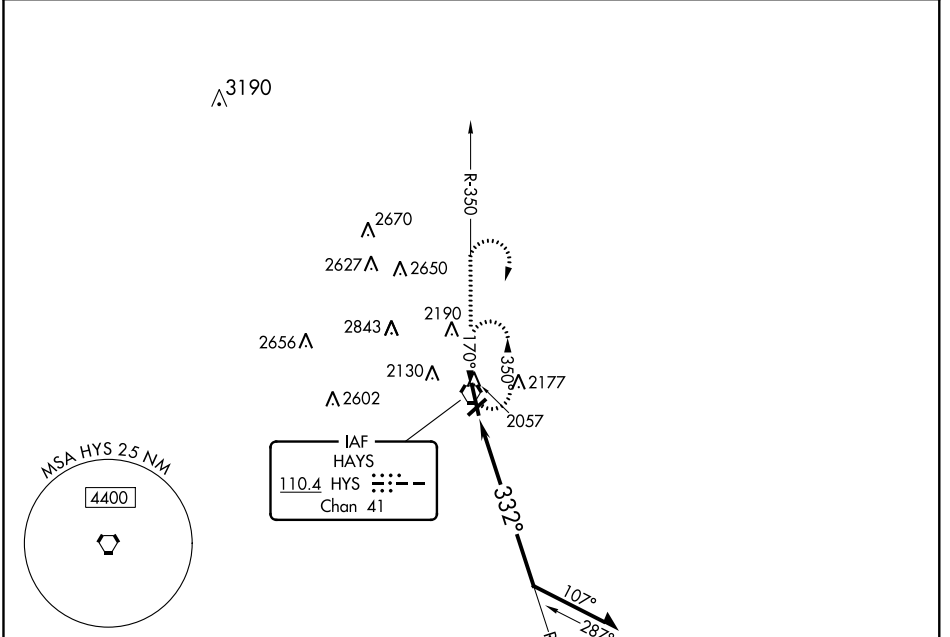
HAYS RGNL (HYS)

When local altimeter setting not received, use Russell altimeter setting and increase all MDA 80 feet, increase S-34 Cats C and D visibility ¼ mile. VDP NA with Russell altimeter setting.


MALSR 


MISSED APPROACH: Climb to 3800 via HYS R-350 then climbing right turn to 3900 direct HYS VORTAC and hold.

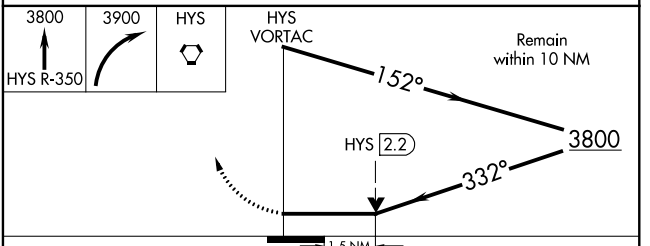
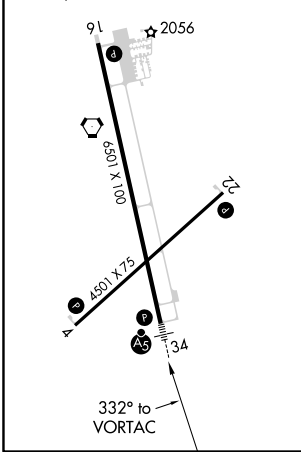
AWOS-3PT <b>125,525</b>	KANSAS CITY CENTER <b>124.4 322.4</b>	UNICOM <b>122.8 (CTAF) 0</b>
----------------------------	--	---------------------------------



ELEV 1999	<b>D</b>	TDZE 1994
-----------	----------	-----------

MIRL Rwy 4-22 and 16-34 

REIL Rwy 4, 22 and 16 



CATEGORY	A	B	C	D
S-34	2480-1/2	486 (500-1/2)	2480-3/4 486 (500-3/4)	2480-1 486 (500-1)
CIRCLING	2480-1	481 (500-1)	2480-1 1/2 481 (500-1 1/2)	2560-2 561 (600-2)

NC-2, 31 JAN 2019 to 28 FEB 2019

NC-2, 31 JAN 2019 to 28 FEB 2019