

WAAS CH 90519 W04A	APP CRS 040°	Rwy Idg TDZE 1990 Apt Elev 1999	4500
--	------------------------	---	-------------

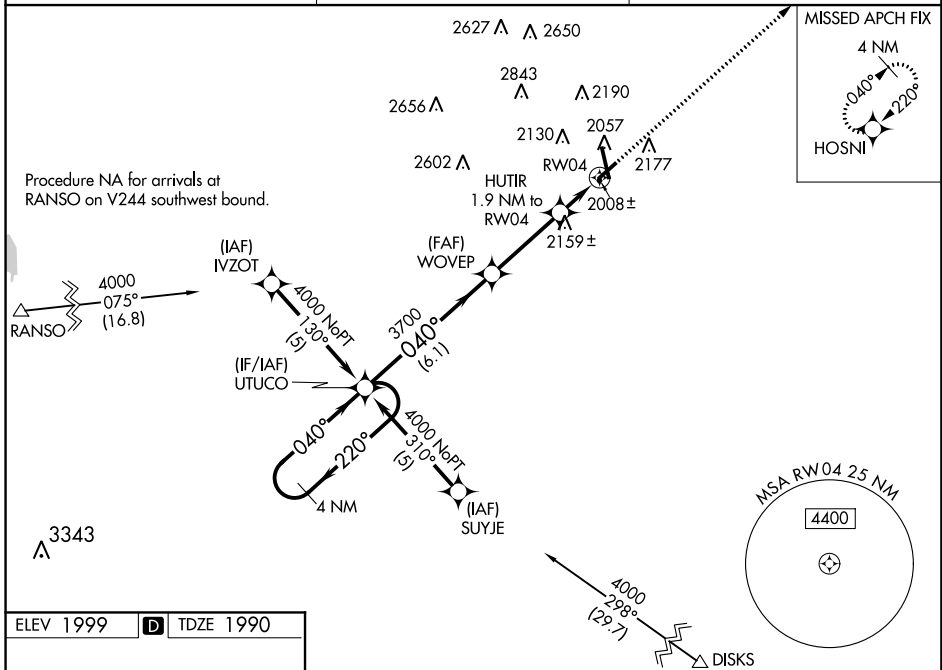
RNAV (GPS) RWY 4

HAYS RGNL (HYS)

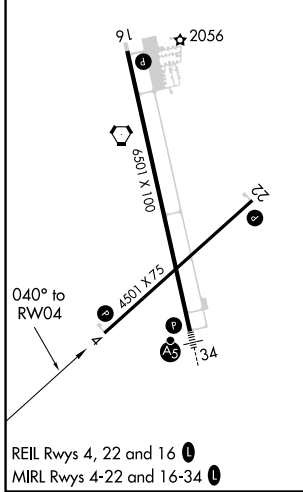
⚠ For uncompensated Baro-VNAV systems, LNAV/VNAV NA below -18°C (0°F) or above 45°C (113°F). DME/DME RNP-0.3 NA. Visibility reduction by helicopters NA. When local altimeter setting not received, use Russell altimeter setting and increase all DA 69 feet and all MDA 80 feet, increase LPV and LNAV/VNAV all Cots visibility ¼ mile and LNAV Cat C visibility ¼ mile. Baro-VNAV NA when using Russell altimeter setting.

MISSED APPROACH:
Climb to 4000 direct HOSNI and hold.

AWOS-3PT 125.525	KANSAS CITY CENTER 124.4 322.4	UNICOM 122.8 (CTAF) 0
----------------------------	--	---------------------------------



ELEV 1999	D	TDZE 1990
-----------	----------	-----------



4 NM Holding Pattern	UTUCO		WOVEP		4000	HOSNI
	4000 ← 220°	040° →	040°	3700	HUTIR 1.9 NM to RWY 4	*LNAV only
GP 3.00°	6.1 NM		3.3 NM	1.9 NM		
TCH 40			*2620			
CATEGORY	A	B	C	D		
LPV DA	2240-1		250 (300-1)			
LNAV/VNAV DA	2278-1		288 (300-1)			
LNAV MDA	2420-1	430 (500-1)	2420-1½ 430 (500-1½)	2420-1½ 430 (500-1½)		
CIRCLING	2440-1 441 (500-1)	2480-1 481 (500-1)	2480-1½ 481 (500-1½)	2560-2 561 (600-2)		

NC-2, 31 JAN 2019 to 28 FEB 2019

NC-2, 31 JAN 2019 to 28 FEB 2019