

| | | | |
|--|------------------------|-----------------------------|---|
| WAAS CH 50519 W22A | APP CRS 220° | Rwy Idg TDZE Apt Elev | 4500 1990 1999 |
|--|------------------------|-----------------------------|---|

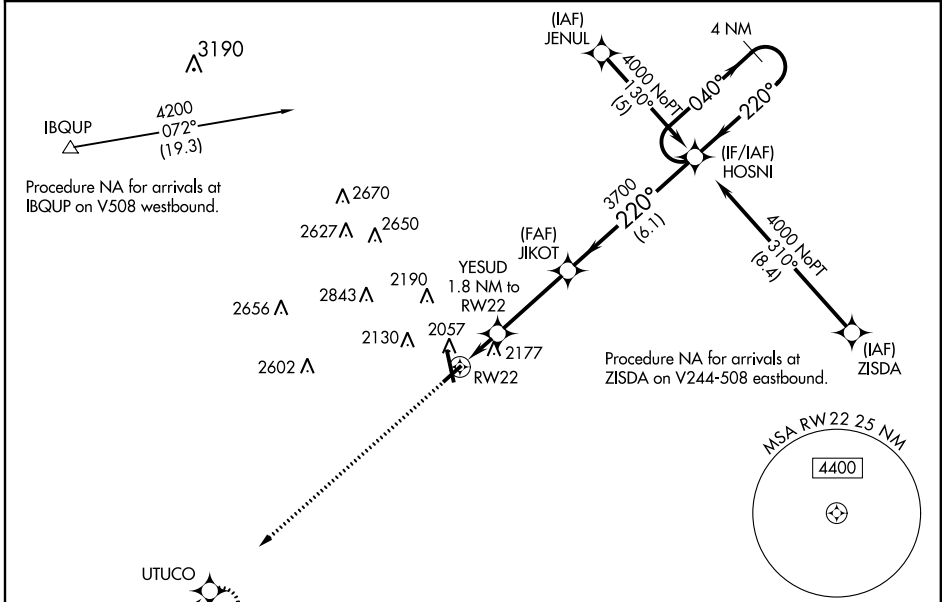
RNAV (GPS) RWY 22

HAYS RGNL (HYS)

⚠ For uncompensated Baro-VNAV systems, LNAV/VNAV NA below -18°C (0°F) or above 45°C (113°F). DME/DME RNP-0.3 NA. Visibility reduction by helicopters NA. When local altimeter setting not received, use Russell altimeter setting and increase all DA 69 feet and all MDA 80 feet, increase LPV and LNAV/VNAV all Cats visibility ¼ mile and LNAV Cat C and D visibility ½ mile. VDP and Baro-VNAV NA when using Russell altimeter setting.

MISSED APPROACH: Climb to 4000 direct UTUCO and hold.

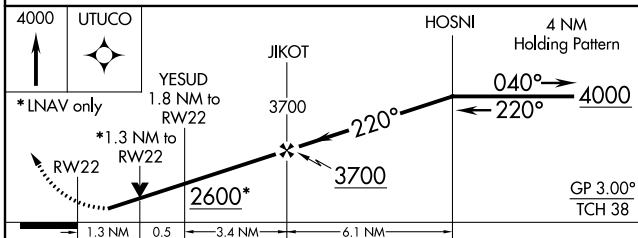
| | | |
|----------------------------|--|-------------------------------|
| AWOS-3PT 125.525 | KANSAS CITY CENTER 124.4 322.4 | UNICOM 122.8 (CTAF) |
|----------------------------|--|-------------------------------|



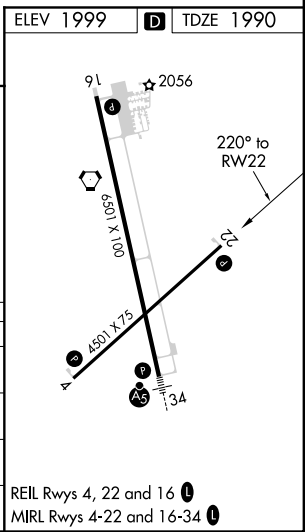
NC-2, 31 JAN 2019 to 28 FEB 2019

NC-2, 31 JAN 2019 to 28 FEB 2019

| | |
|-----------|--------------------|
| ELEV 1999 | D TDZE 1990 |
|-----------|--------------------|



| CATEGORY | A | B | C | D |
|--------------|----------------------|----------------------|----------------------|----------------------|
| LPV DA | 2240-1 250 (300-1) | | | |
| LNAV/VNAV DA | 2476-1¾ 486 (500-1¾) | | | |
| LNAV MDA | 2440-1 450 (500-1) | 2440-1¼ 450 (500-1¼) | 2440-1½ 450 (500-1½) | 2440-1½ 450 (500-1½) |
| CIRCLING | 2440-1 441 (500-1) | 2480-1 481 (500-1) | 2480-1½ 481 (500-1½) | 2560-2 561 (600-2) |



REIL Rws 4, 22 and 16
MRL Rws 4-22 and 16-34