

LOC I-HYS 111.5	APP CRS 339°	Rwy Idg 6501 TDZE 1994 Apt Elev 1999
---------------------------	------------------------	---

ILS or LOC RWY 34

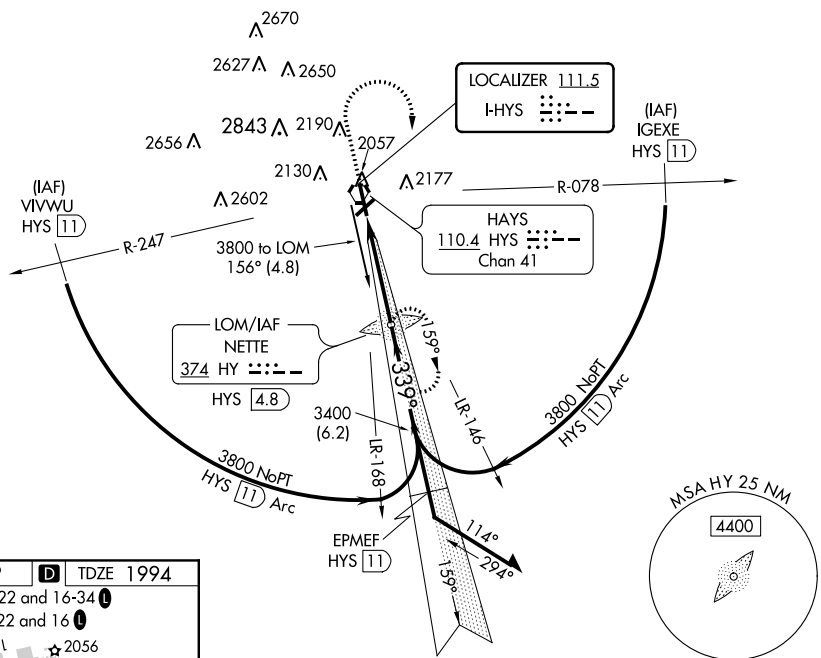
HAYS RGNL (HYS)

NA ADF required. When local altimeter setting not received, use Russell altimeter setting and increase all DA 69 feet and all MDA 80 feet, increase S-LOC Cat C visibility ¼ mile. For inoperative MALSRR when using Russell altimeter setting, increase S-ILS all Cats visibility to 1.

MALSRR
MISSED APPROACH: Climb to 2600 then climbing right turn to 3800 direct NETTE LOM/HYS 4.8 DME and hold.

AWOS-3PT 125,525	KANSAS CITY CENTER 124.4 322.4	UNICOM 122.8 (CTAF)
----------------------------	--	-------------------------------

ADF or DME REQUIRED

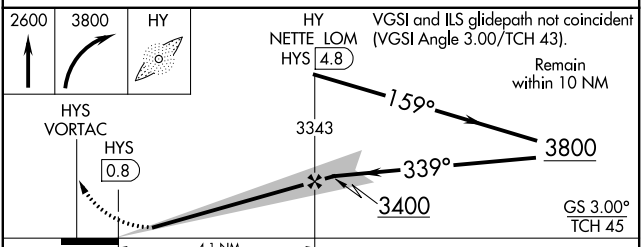
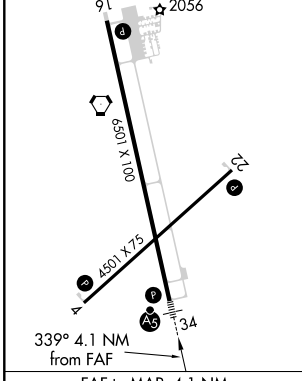


NC-2, 31 JAN 2019 to 28 FEB 2019

NC-2, 31 JAN 2019 to 28 FEB 2019

ELEV 1999	D	TDZE 1994
-----------	----------	-----------

MIRL Rwys 4-22 and 16-34
REIL Rwys 4, 22 and 16



CATEGORY	A	B	C	D
S-ILS 34	2194-½ 200 (200-½)			
S-LOC 34	2340-½ 346 (400-½)			2340-¾ 346 (400-¾)
CIRCLING	2440-1 441 (500-1)	2480-1 481 (500-1)	2480-1½ 481 (500-1½)	2560-2 561 (600-2)