

WAAS CH <b>81932</b> <b>W12A</b>	APP CRS <b>125°</b>	Rwy Idg TDZE Apt Elev	<b>4257</b> <b>1060</b> <b>1060</b>
--	------------------------	-----------------------------	---

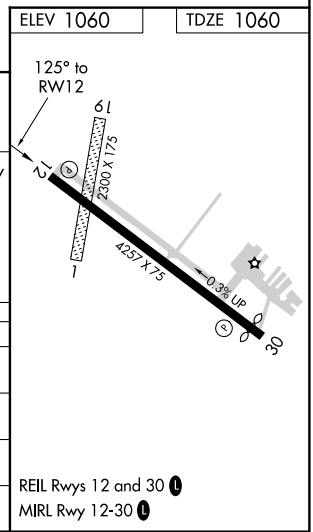
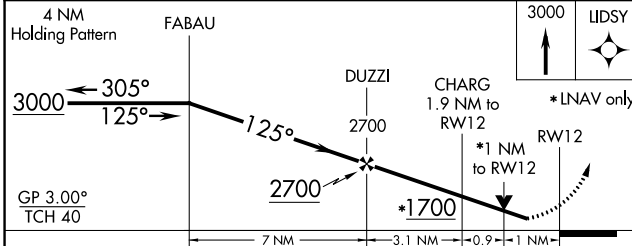
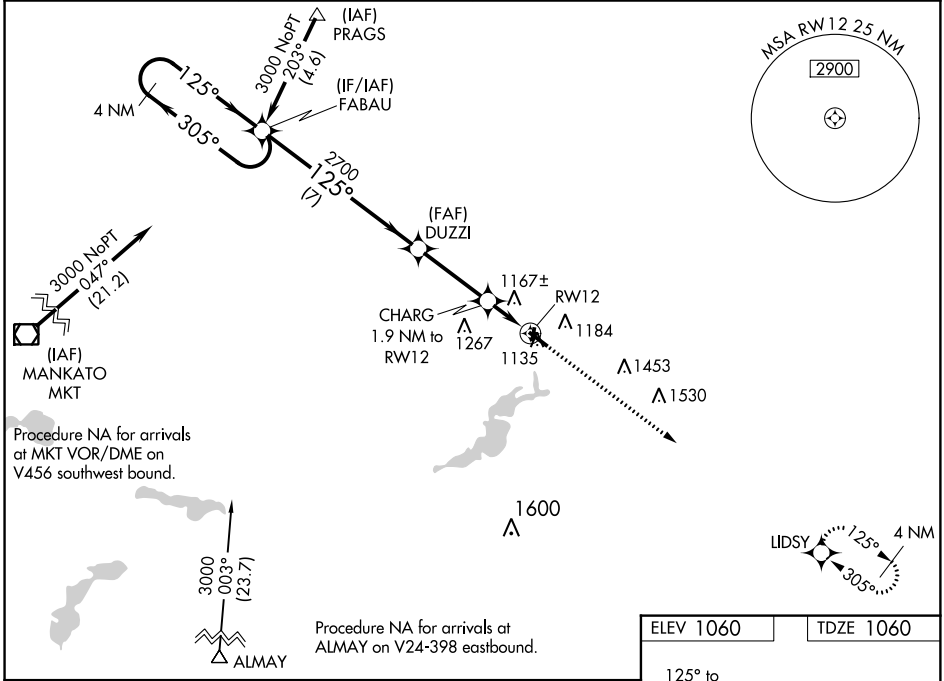
# RNAV (GPS) RWY 12

FARIBAULT MUNI-LIZ WALL STROHFUS FIELD (F'BL)

▼ Baro-VNAV and VDP NA when using Owatonna altimeter setting. For uncompensated Baro-VNAV systems, LNAV/VNAV NA below -17°C (2°F) or above 54°C (130°F). DME/DME RNP-0.3 NA. When local altimeter setting not received, use Owatonna altimeter setting and increase all DA 41 feet and all MDA 60 feet; increase LNAV Cat C visibility 1/8 mile. Rwy 12 helicopter visibility reduction below 3/4 SM NA. Circling to Rwy 1, 19 NA.

MISSED APPROACH:  
Climb to 3000 direct  
LIDSY and hold.

AWOS-3 <b>111.2</b>	MINNEAPOLIS APP CON <b>134.7 284.7</b>	GCO <b>121.725</b>	UNICOM <b>122.8 (CTAF)</b>
------------------------	---	-----------------------	-------------------------------



CATEGORY	A	B	C	D
LPV DA		1310-1 250 (300-1)		NA
LNAV/VNAV DA		1331-1 271 (300-1)		NA
LNAV MDA		1420-1 360 (400-1)		NA
CIRCLING	1520-1 460 (500-1)		1520-1½ 460 (500-1½)	NA

NC-1, 31 JAN 2019 to 28 FEB 2019

NC-1, 31 JAN 2019 to 28 FEB 2019