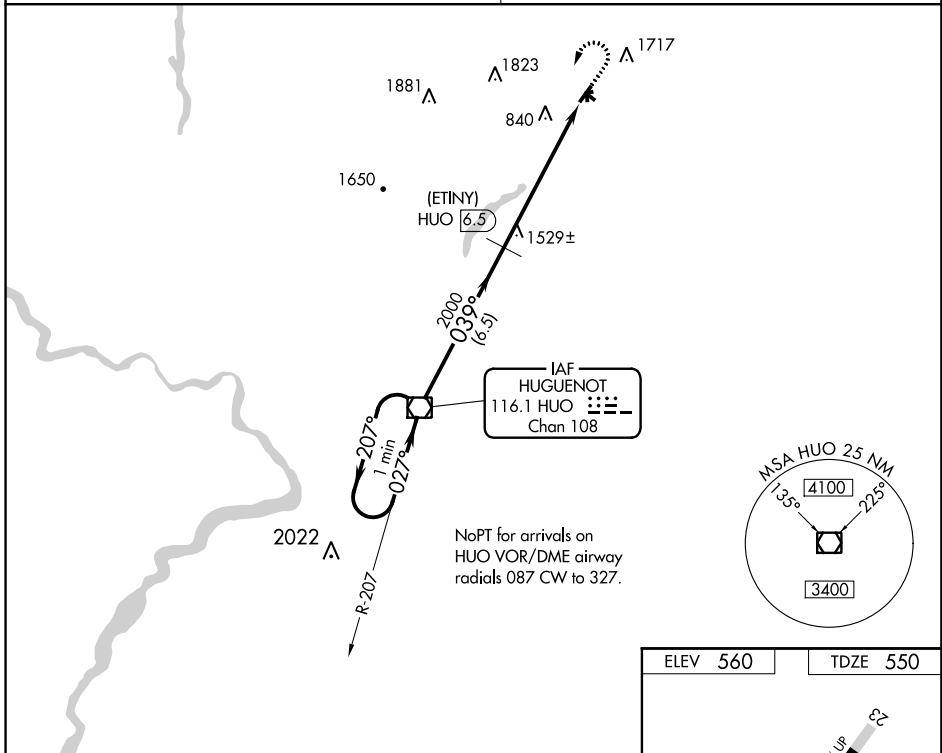


| | | | |
|-------------------------|-------------|----------|-------------|
| VOR/DME H ^{UO} | APP CRS | Rwy Idg | 3358 |
| 116.1 | 039° | TDZE | 550 |
| Chan 108 | | Apt Elev | 560 |

VOR/DME or GPS RWY 5

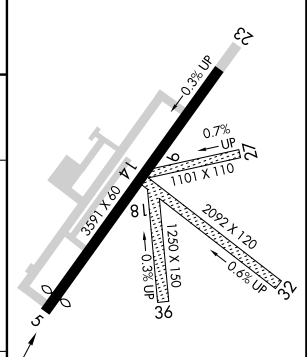
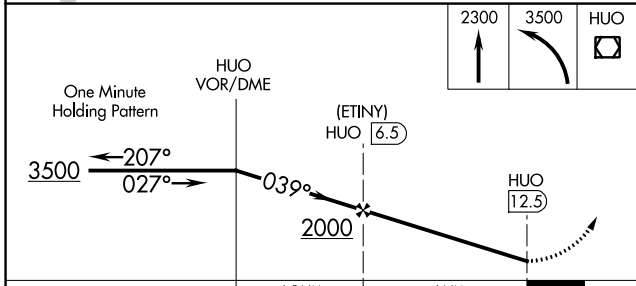
WURTSBORO-SULLIVAN COUNTY (N82)

| | |
|--|---|
| <p>▼ Obtain local altimeter setting on CTAF, when not received, procedure not authorized.</p> <p>▲ NA Procedure not authorized at night.</p> | <p>MISSED APPROACH: Climb to 2300 then climbing left turn to 3500 direct H^{UO} VOR/DME and hold.</p> |
| <p>NEW YORK APP CON</p> <p>132.75 363.1</p> | <p>UNICOM</p> <p>122.8 (CTAF)</p> |



NoPT for arrivals on H^{UO} VOR/DME airway radials 087 CW to 327.

| | |
|----------|----------|
| ELEV 560 | TDZE 550 |
|----------|----------|



| CATEGORY | A | B | C | D |
|----------|---------------------------|---------------------------|-------------------------|----|
| S-5 | 1880-1¼ 1330 (1400-1¼) | 1880-1½ 1330 (1400-1½) | 1880-3 1330 (1400-3) | NA |
| CIRCLING | 1880-1¼ 1320 (1400-1¼) | 1880-1½ 1320 (1400-1½) | 2020-3 1460 (1500-3) | NA |

NE-2, 31 JAN 2019 to 28 FEB 2019

NE-2, 31 JAN 2019 to 28 FEB 2019