

VORTAC ILA <b>114.4</b> Chan <b>91</b>	APP CRS <b>323°</b>	Rwy Idg TDZE <b>138</b> Apt Elev <b>141</b>
--	------------------------	---

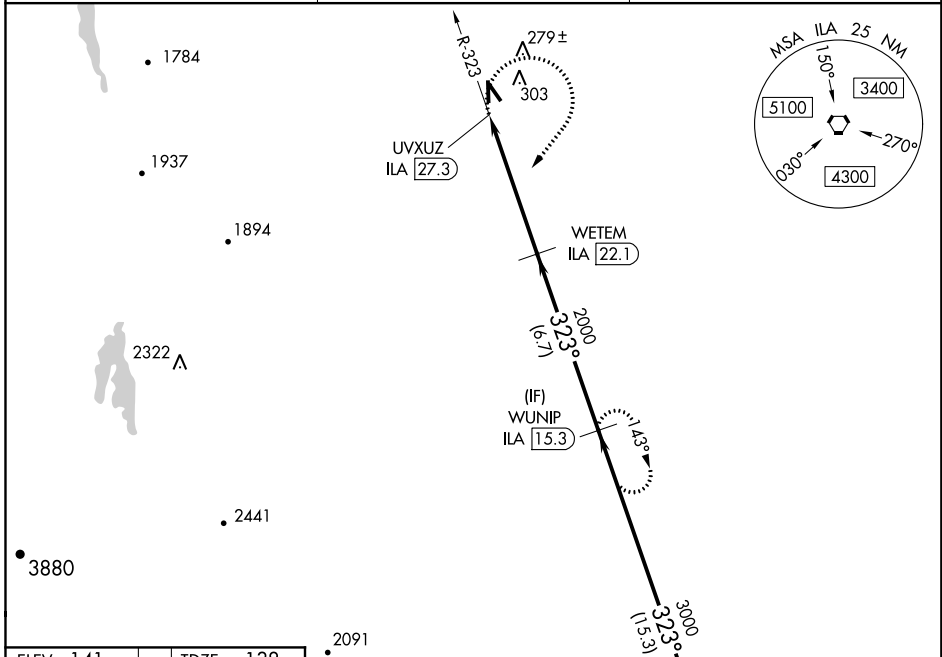
# VOR RWY 34

WILLOWS-GLENN COUNTY (WL,W)

**NA** When Oroville Muni altimeter setting not received, procedure NA. DME required. Use Oroville Muni altimeter setting.

MISSED APPROACH: Climbing right turn to 3000 on heading 200° and on ILA VORTAC R-323 to WUNIP/ILA 15.3 DME and hold.

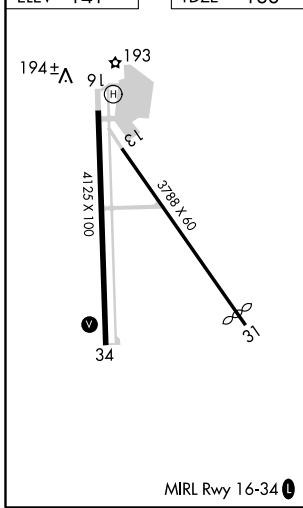
OROVILLE MUNI ASOS <b>121.425</b>	OAKLAND CENTER <b>132.2 350.3</b>	UNICOM <b>122.8 (CTAF) 0</b>
--------------------------------------	--------------------------------------	---------------------------------



SW-2, 31 JAN 2019 to 28 FEB 2019

SW-2, 31 JAN 2019 to 28 FEB 2019

ELEV <b>141</b>	TDZE <b>138</b>
-----------------	-----------------



## DME REQUIRED

3000 hdg 200°	ILA R-323	WUNIP ILA 15.3	WETEM ILA 22.1	WUNIP ILA 15.3
UVXUZ ILA 27.3		≤ 3.00° TCH 31	323°	3000
0.5 NM		5.3 NM		6.7 NM
CATEGORY	A	B	C	D
S-34	1000-1 862 (900-1)	1000-1¼ 862 (900-1¼)	1000-2½ 862 (900-2½)	NA
<input checked="" type="checkbox"/> CIRCLING	1000-1¼	859 (900-1¼)	1000-2½ 859 (900-2½)	NA