

CAMP RIPLEY, MINNESOTA

# RNAV (GPS) RWY 31

RAY S. MILLER AAF (KRYM)

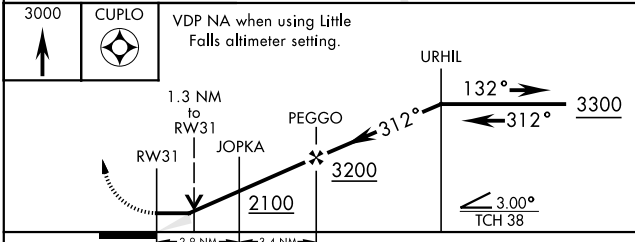
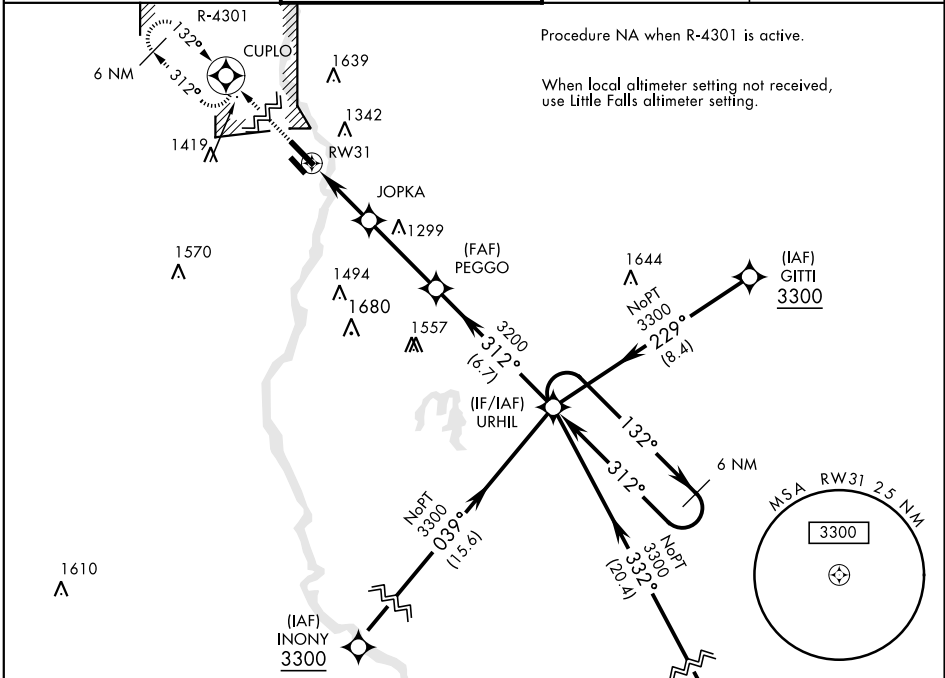
APCH CRS	Rwy Idg	<b>6100</b>
<b>312°</b>	THRE	<b>1146</b>
	Arpt Elev	<b>1150</b>

AL-5226 [USA]

<b>▽</b>	* When ALS inop, increase CAT D vis to 1¼ miles.	<b>MALSF</b>
<b>▲</b> NA	DME/DME RNP-0.3 NA.	<b>4</b>

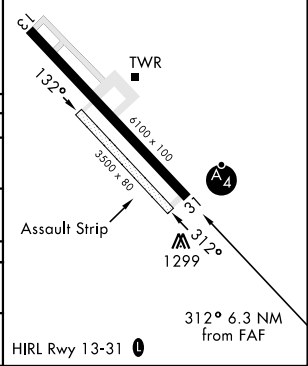
MISSED APPROACH: Climb to 3000 direct CUPLO and hold.

MINNEAPOLIS CENTER <b>118.05 239.0</b>	MILLER TOWER ★ <b>126.2 0 254.4 46.7</b>	CLNC DEL <b>126.2</b>	AWOS-3 <b>142.95</b>
---	---	--------------------------	-------------------------



ELEV 1150	THRE 1146
-----------	-----------

CATEGORY	A	B	C	D
RNAV MDA *	1580-¾ 434 (500-¾)	1580-1 434 (500-1)		
<b>C</b> CIRCLING	1640-1 490 (500-1)	1660-1 510 (600-1)	1720-1½ 570 (600-1½)	2080-3 930 (1000-3)
LITTLE FALLS ALTIMETER SETTING				
RNAV MDA *	1620-¾ 474 (500-¾)	1620-1½ 474 (500-1½)		
<b>C</b> CIRCLING	1680-1 530 (600-1)	1760-1¾ 610 (700-1¾)	2120-3 970 (1000-3)	



CAMP RIPLEY, MINNESOTA  
Amdt 2A 19JUL18

46°05'N-94°21'W

RAY S. MILLER AAF (KRYM)

# RNAV (GPS) RWY 31

NC-1, 31 JAN 2019 to 28 FEB 2019

NC-1, 31 JAN 2019 to 28 FEB 2019