

RNAV (GPS) RWY 13

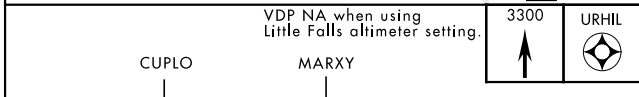
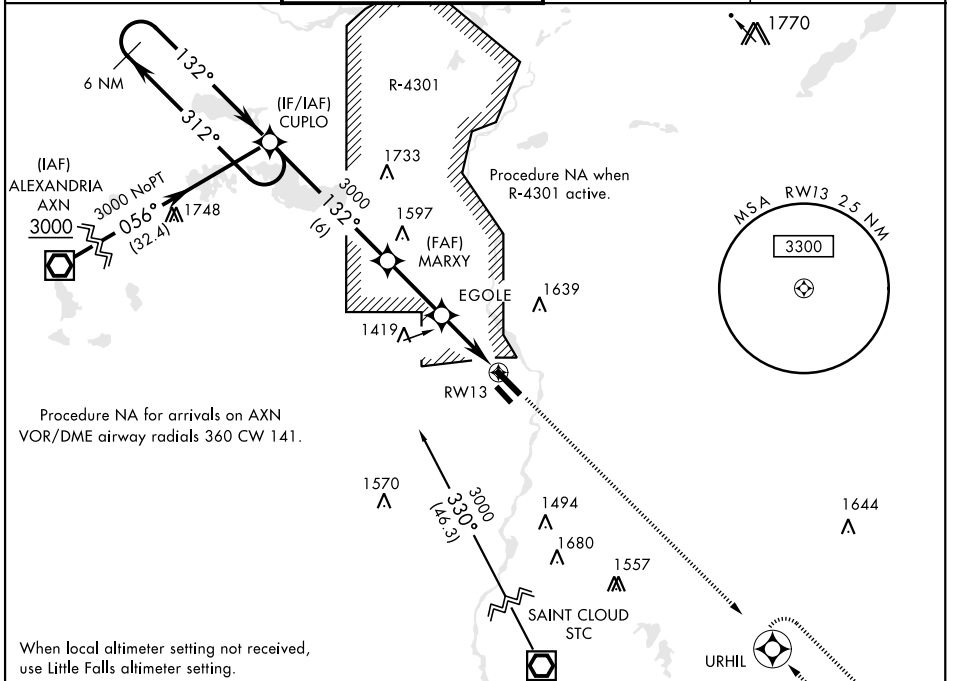
APCH CRS	Rwy Idg	6100
132°	TDZE	1150
	Arprt Elev	1150

AL-5226 [USA]

RAY S. MILLER AAF (KRYM)

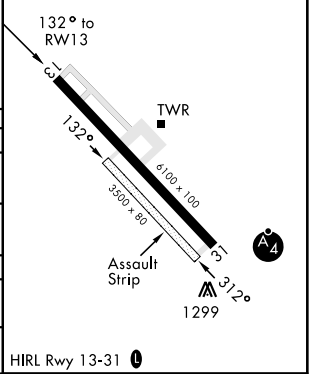
▽ NA	RNP APCH	MISSED APPROACH: Climb to 3300 direct URHIL and hold.	
-------------	----------	---	--

MINNEAPOLIS CENTER 118.05 239.0	MILLER TOWER ★ 126.2 0 254.4 46.7	CLNC DEL 126.2	AWOS-3 142.95
---	---	--------------------------	-------------------------



ELEV	1150	TDZE	1150
------	------	------	------

CATEGORY	A	B	C	D
RNAV MDA	1680-1 530 (600-1)	1680-1½ 530 (600-1½)		
C CIRCLING	1680-1 530 (600-1)	1720-1½ 570 (600-1½)	2080-3 930 (1000-3)	
LITTLE FALLS ALTIMETER SETTING				
RNAV MDA	1720-1 570 (600-1)	1720-1⅝ 570 (600-1⅝)		
C CIRCLING	1720-1 570 (600-1)	1760-1¾ 610 (700-1¾)	2120-3 970 (1000-3)	



RNAV (GPS) RWY 13

NC-1, 31 JAN 2019 to 28 FEB 2019

NC-1, 31 JAN 2019 to 28 FEB 2019