

CAMP RIPLEY, MINNESOTA

ILS or LOC RWY 31

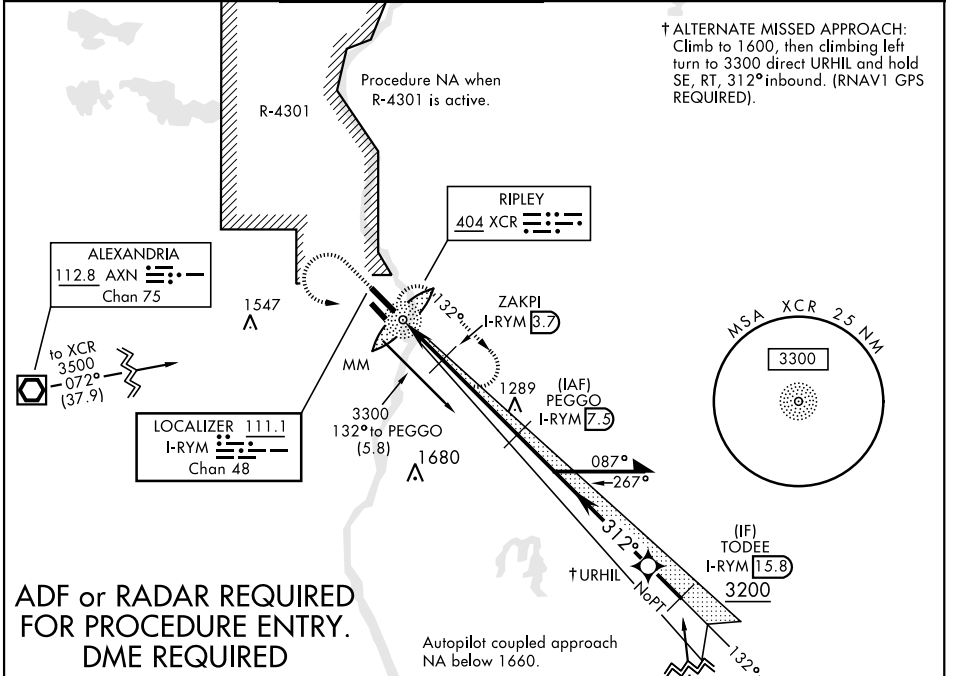
LOC I-RYM 111.1 Chan 48	APCH CRS 312°	Rwy ldg TDZE 6100 1149 Arpt Elev 1150
--------------------------------------	-------------------------	--

AL-5226 [USA]

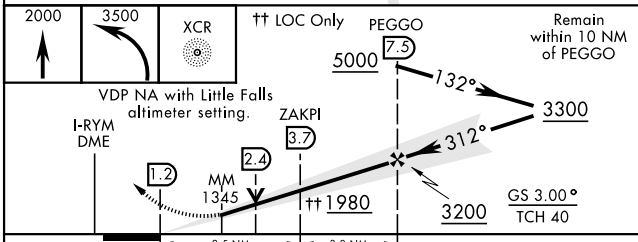
RAY S. MILLER AAF (KRYM)

<p>▽ When local altimeter setting not received, use Little Falls altimeter setting.</p> <p>▲ NA</p>	<p>MALSF A4</p>	<p>† MISSED APPROACH: Climb to 2000, then climbing left turn to 3500 direct XCR NDB and hold. Continue climb in hold to 3500.</p>
---	-----------------------------------	---

MINNEAPOLIS CENTER 118.05 239.0	MILLER TOWER ★ 126.2 0 254.4 46.7	CLNC DEL 126.2	AWOS-3 142.95
---	---	--------------------------	-------------------------

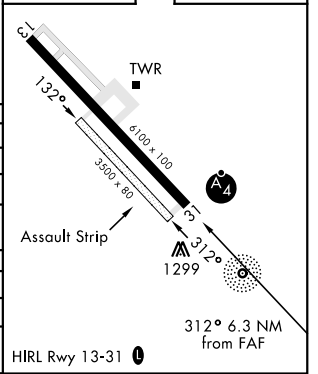


ADF or RADAR REQUIRED FOR PROCEDURE ENTRY.
DME REQUIRED



ELEV 1150	TDZE 1149
-----------	-----------

CATEGORY	A	B	C	D
S-ILS 31	1346-¾		200	(200-¾)
S-LOC 31	1580-¾	434 (500-¾)	1580-1	434 (500-1)
C CIRCLING	1640-1 490 (500-1)	1660-1 510 (600-1)	1720-1½ 570 (600-1½)	2080-3 930 (1000-3)
LITTLE FALLS ALTIMETER SETTING MINIMUMS				
S-ILS 31	1370-¾		224	(300-¾)
S-LOC 31	1620-¾	474 (500-¾)	1620-1	474 (500-1)
C CIRCLING	1680-1 530 (600-1)	1700-1 550 (600-1)	1760-1½ 610 (700-1½)	2120-3 970 (1000-3)



CAMP RIPLEY, MINNESOTA
Amdt 6 19JUL18

46°05'N-94°21'W

RAY S. MILLER AAF (KRYM)

ILS or LOC RWY 31

NC-1, 31 JAN 2019 to 28 FEB 2019

NC-1, 31 JAN 2019 to 28 FEB 2019