

WAAS CH 93517 W21A	APP CRS 208°	Rwy ldg TDZE Apt Elev	8002 879 918
--	------------------------	-----------------------------	---

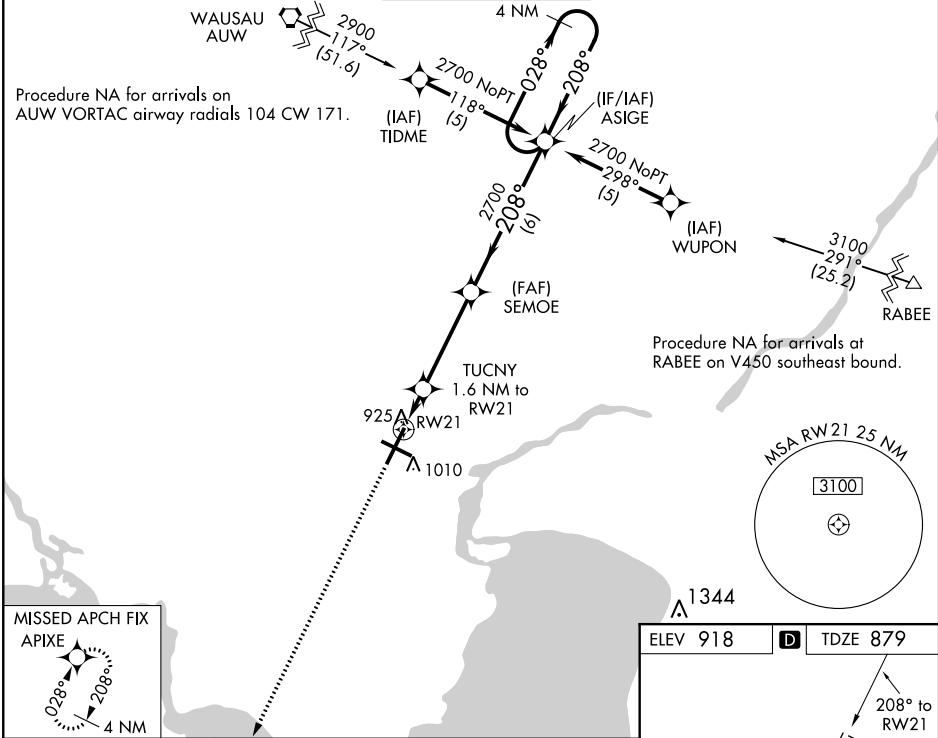
RNAV (GPS) RWY 21

APPLETON INTL (ATW)

▼ Baro-VNAV NA when using Green Bay-Austin Straubel Intl altimeter setting. For uncompensated Baro-VNAV systems, LNAV/VNAV NA below -16°C (4°F) or above 47°C (116°F). DME/DME RNP-0.3 NA. Visibility reduction by helicopters NA. When local altimeter setting not received, use Green Bay-Austin Straubel Intl altimeter setting and increase all DA 81 feet and all MDA 100 feet. Increase LPV and LNAV/VNAV all Cats and LNAV Cat C/D visibility ¼ mile.

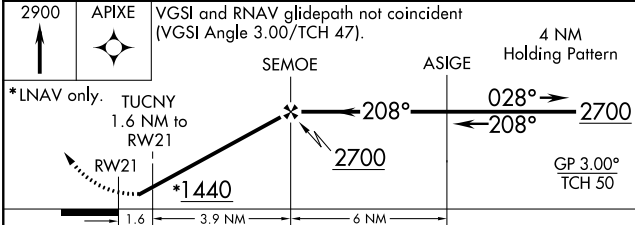
MISSED APPROACH:
Climb to 2900 direct
APIXE and hold.

ATIS 127.15	GREEN BAY APP CON* 126.3 338.2	APPLETON TOWER* 119.6 (CTAF)	GND CON 121.7	UNICOM 122.95
-----------------------	--	--	-------------------------	-------------------------



EC-3, 31 JAN 2019 to 28 FEB 2019

EC-3, 31 JAN 2019 to 28 FEB 2019



CATEGORY	A	B	C	D
LPV DA		1129-1	250 (300-1)	
LNAV/VNAV DA		1246-1¼	367(400-1)	
LNAV MDA	1280-1	401(400-1)	1280-1¼	401 (400-1¼)
CIRCLING	1340-1 422 (500-1)	1380-1 462 (500-1)	1380-1½ 462 (500-1½)	1480-2 562 (600-2)

