

LOC/DME I-AQZ 109.7 Chan 34	APP CRS 298°	Rwy Idg 6501 TDZE 875 Apt Elev 918
---	------------------------	---

ILS or LOC RWY 30

APPLETON INTL (ATW)

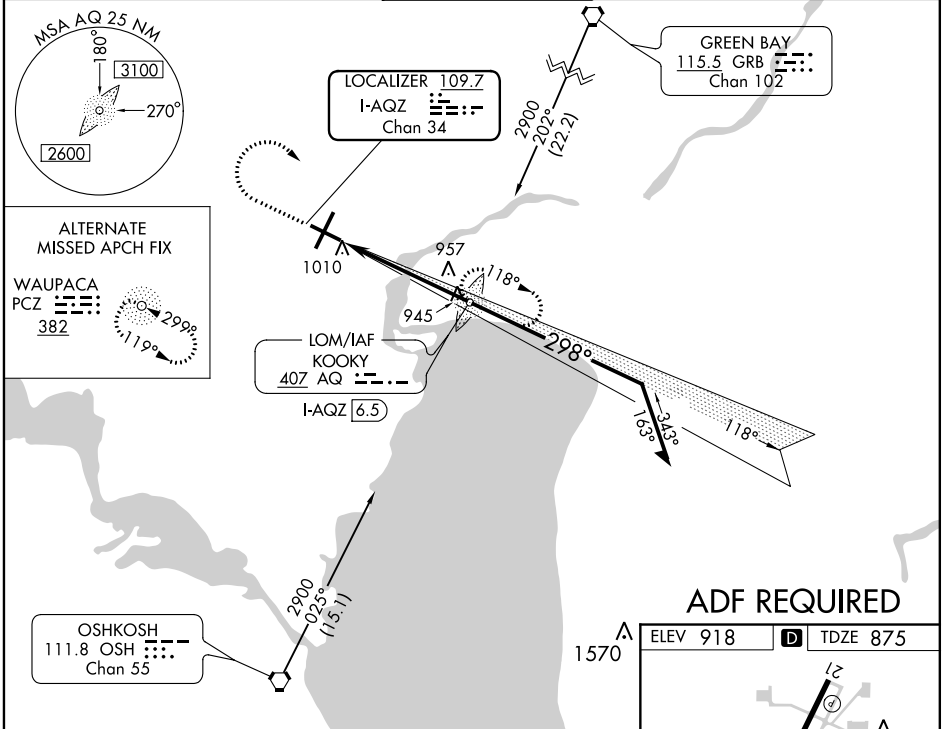
▽ For inoperative MALS when using Green Bay-Austin Straubel Intl altimeter setting, increase S-ILS all Cats visibility to 1 mile. ADF required. When local altimeter setting not received, use Green Bay-Austin Straubel Intl altimeter setting and increase all DA 81 feet and all MDA 100 feet. Increase S-LOC Cat C and D visibility ¼ mile. VDP NA when using Green Bay-Austin Straubel Intl altimeter setting.

▲ NA

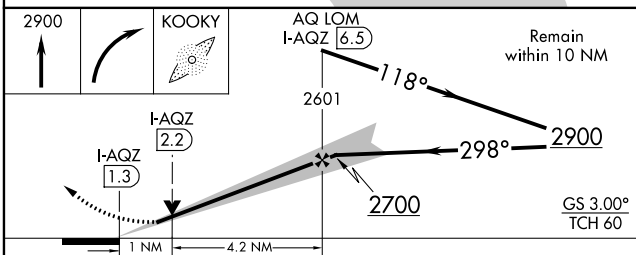
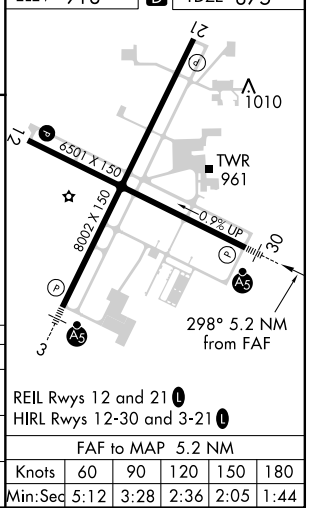
MALS R

MISSED APPROACH: Climb to 2900, then right turn direct KOOKY LOM/I-AQZ 6.5 DME and hold.

ATIS 127.15	GREEN BAY APP CON* 126.3 338.2	APPLETON TOWER* 119.6 (CTAF) 0	GND CON 121.7	UNICOM 122.95
-----------------------	--	--	-------------------------	-------------------------



ADF REQUIRED



CATEGORY	A	B	C	D
S-ILS 30	1075-½		200 (200-½)	
S-LOC 30	1220-½ 345 (400-½)		1220-¾ 345 (400-¾)	
CIRCLING	1340-1 422 (500-1)	1380-1 462 (500-1)	1380-1½ 462 (500-1½)	1480-2 562 (600-2)

EC-3, 31 JAN 2019 to 28 FEB 2019

EC-3, 31 JAN 2019 to 28 FEB 2019