

WLSTN SEVEN DEPARTURE

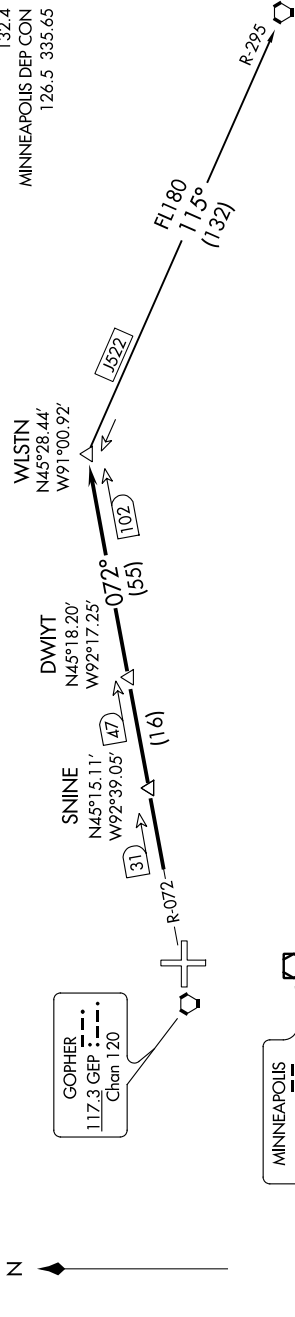
NC-1, 31 JAN 2019 to 28 FEB 2019

TAKEOFF MINIMUMS

- Rwy 9: Standard with minimum climb of 341' per NM to 3000.
- Rwy 18: Standard with minimum climb of 371' per NM to 3000.
- Rwy 27: Standard with minimum climb of 259' per NM to 2800.
- Rwy 36: Standard with minimum climb of 259' per NM to 2800.

TOP ALTITUDE:
(JETS) 7000'
(PROPS) 5000'

- ATIS 120.625
- CINC DEL 121.3
- MINNEAPOLIS CINC DEL 121.85 (when tower closed)
- ANOKA TOWER* 132.4
- MINNEAPOLIS DEP CON 126.5 335.65



GREEN BAY
 115.5 GRB
 Chan 102
 N44°33.31'-W88°11.69'
 L-31, H-2

NOTE: RADAR required.
 NOTE: Chart not to scale.

DEPARTURE ROUTE DESCRIPTION

TAKEOFF ALL RUNWAYS: Fly assigned heading and altitude for RADAR vectors to GEP R-072 to WLSTN/GEP 102 DME. Thence

. . . . on assigned transition or assigned route. Expect clearance to filed altitude/flight level 10 (ten) minutes after departure.

GREEN BAY TRANSITION (WLSTN7.GRB): From over WLSTN on GRB R-295 to GRB VORTAC.

NC-1, 31 JAN 2019 to 28 FEB 2019