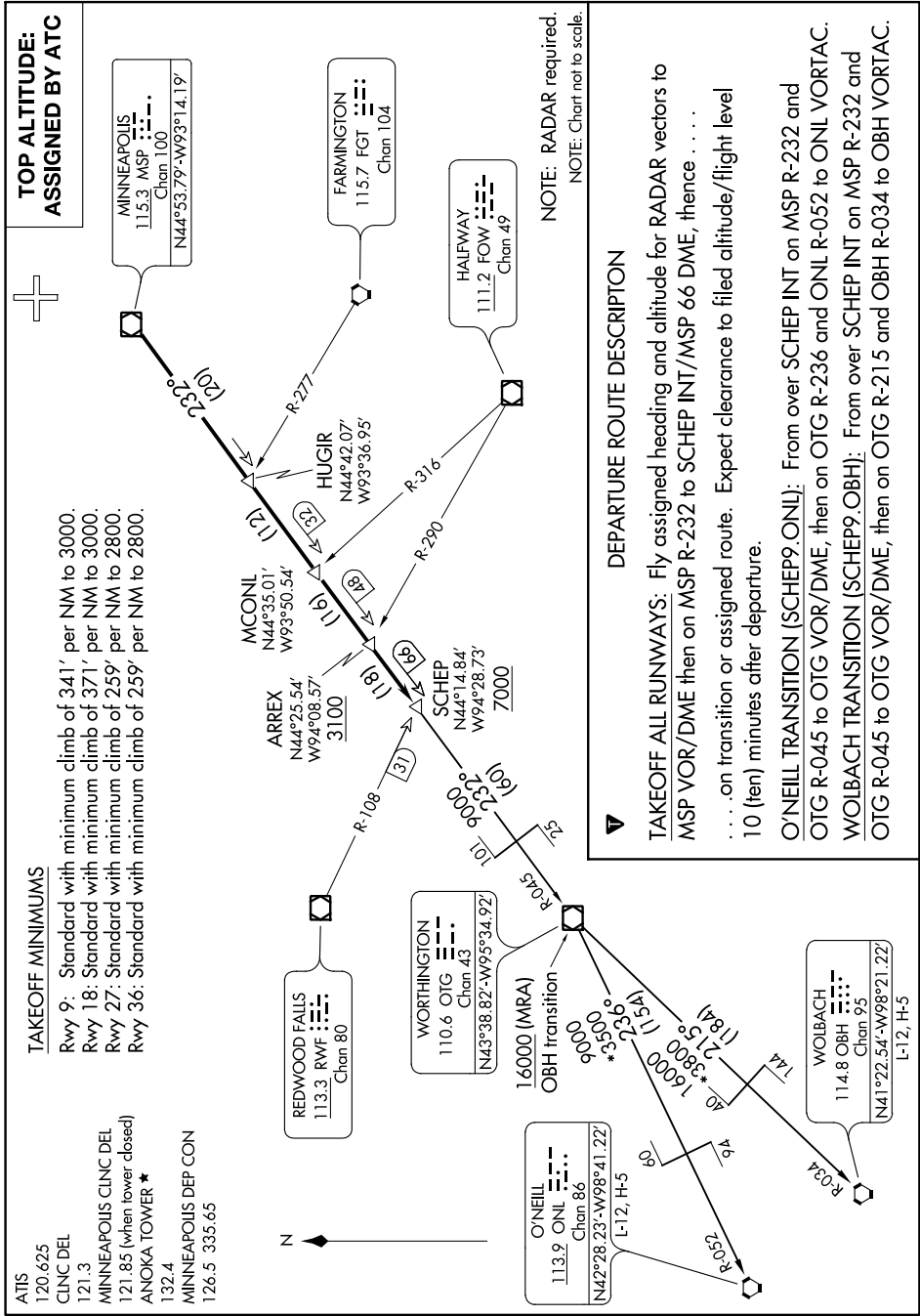


NC-1, 31 JAN 2019 to 28 FEB 2019



TAKEOFF MINIMUMS

- Rwy 9: Standard with minimum climb of 341' per NM to 3000.
- Rwy 18: Standard with minimum climb of 371' per NM to 3000.
- Rwy 27: Standard with minimum climb of 259' per NM to 2800.
- Rwy 36: Standard with minimum climb of 259' per NM to 2800.

- ATIS 120.625
- CLNC DEL 121.3
- MINNEAPOLIS CLNC DEL 121.85 (when tower closed)
- ANOKA TOWER* 132.4
- MINNEAPOLIS DEP CON 126.5 335.65

TOP ALTITUDE: ASSIGNED BY ATC

MINNEAPOLIS
115.3 MSP
Chan. 100
N44°53.79'-W93°14.19'

FARMINGTON
115.7 FGT
Chan. 104

HALFWAY
111.2 FOW
Chan. 49

REDWOOD FALLS
113.3 RWV
Chan. 80

WORTHINGTON
110.6 OTG
Chan. 43
N43°38.82'-W95°34.92'

O'NEILL ONL
113.9 ONL
Chan. 86
N42°28.23'-W98°41.22'

WOLBACH
114.8 OBH
Chan. 95
N41°22.54'-W98°21.22'

DEPARTURE ROUTE DESCRIPTION

TAKEOFF ALL RUNWAYS: Fly assigned heading and altitude for RADAR vectors to MSP VOR/DME then on MSP R-232 to SCHEP INT/MSP 66 DME, thence on transition or assigned route. Expect clearance to filed altitude/flight level 10 (ten) minutes after departure.

O'NEILL TRANSITION (SCHEP9.ONL): From over SCHEP INT on MSP R-232 and OTG R-045 to OTG VOR/DME, then on OTG R-236 and ONL R-052 to ONL VORTAC.

WOLBACH TRANSITION (SCHEP9.OBH): From over SCHEP INT on MSP R-232 and OTG R-045 to OTG VOR/DME, then on OTG R-215 and OBH R-034 to OBH VORTAC.

NOTE: RADAR required.
NOTE: Chart not to scale.

NC-1, 31 JAN 2019 to 28 FEB 2019