

WAAS CH 82312 W09A	APP CRS 089°	Rwy Idg TDZE Apt Elev	5000 910 912
--	------------------------	-----------------------------	---

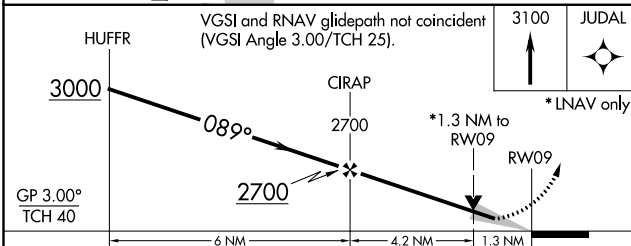
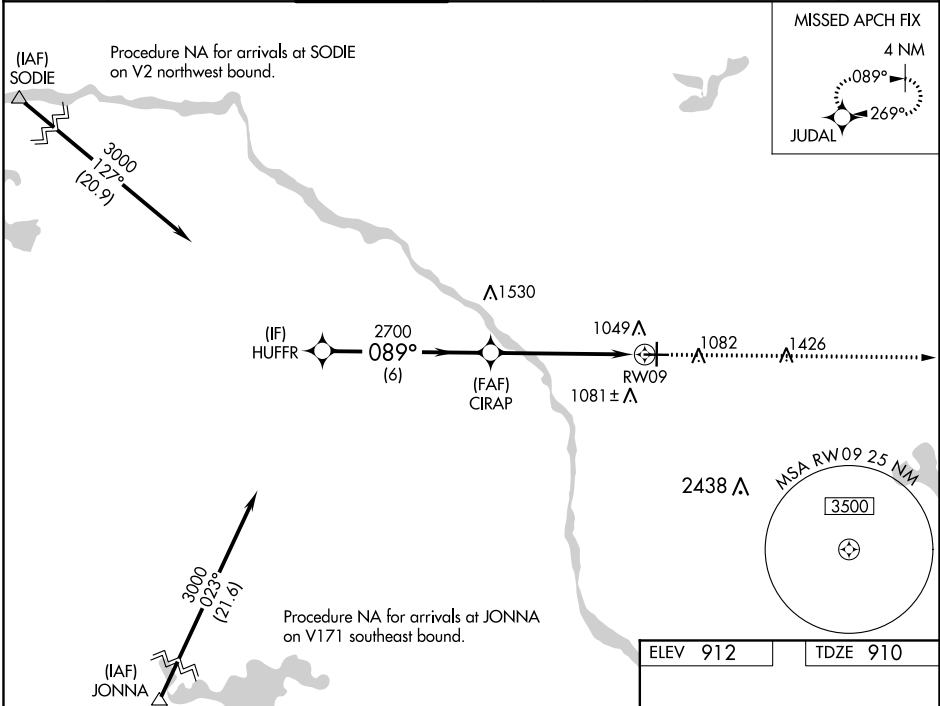
RNAV (GPS) RWY 9

ANOKA COUNTY-BLAINE (JANES FIELD) (A.N.E.)

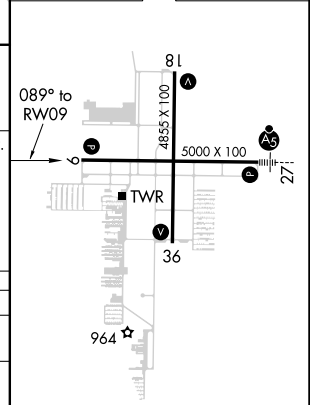
▽ For uncompensated Baro-VNAV systems, LNAV/VNAV NA below -16°C (4°F) or above 54°C (130°F).
DME/DME RNP-0.3 NA.

MISSED APPROACH: Climb to 3100 direct JUDAL and hold.

ATIS 120.625	MINNEAPOLIS APP CON 126.5 335.65	ANOKA TOWER* 132.4 (CTAF) 0	GND CON 121.85	CLNC DEL 121.3	MINNEAPOLIS CLNC DEL 121.85 (When tower closed)	UNICOM 122.95
------------------------	--	--	--------------------------	--------------------------	--	-------------------------



ELEV 912	TDZE 910
----------	----------



CATEGORY	A	B	C	D
LPV DA	1225-1 315 (400-1)			
LNAV/VNAV DA	1352-1 3/8 442 (500-1 3/8)			
LNAV MDA	1340-1 430 (500-1)	1340-1 1/4 430 (500-1 1/4)		
C CIRCLING	1400-1 488 (500-1)	1460-1 1/2 548 (600-1 1/2)	1580-2 668 (700-2)	

HIRL Rwy 9-27 **1**
MIRL Rwy 18-36 **1**
REIL Rwy 9, 18 and 36 **1**

NC-1, 31 JAN 2019 to 28 FEB 2019

NC-1, 31 JAN 2019 to 28 FEB 2019