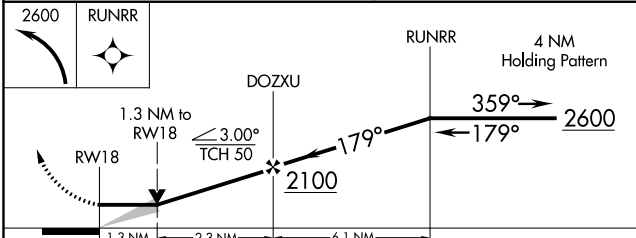
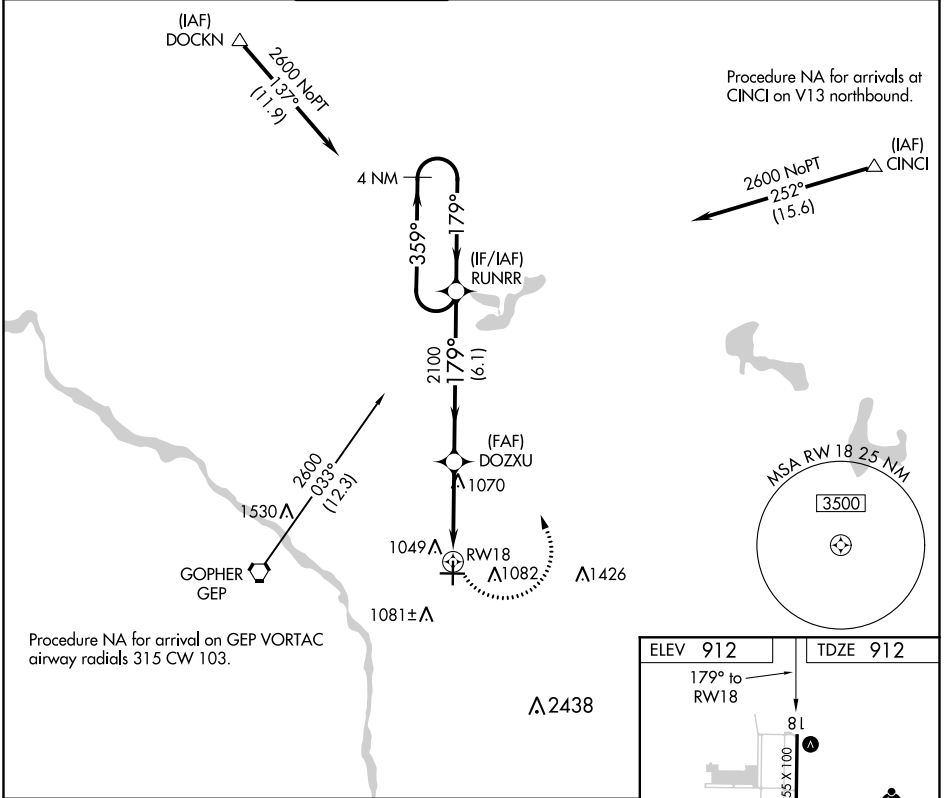


APP CRS	Rwy Idg	<b>4855</b>
<b>179°</b>	TDZE	<b>912</b>
	Apt Elev	<b>912</b>

# RNAV (GPS) RWY 18

ANOKA COUNTY-BLAINE (JANES FIELD) (A.N.E.)

DME/DME RNP-0.3 NA.			MISSED APPROACH: Climbing left turn to 2600 direct RUNRR and hold.			
ATIS	MINNEAPOLIS APP CON	ANOKA TOWER★	GND CON	CLNC DEL	MINNEAPOLIS CLNC DEL	UNICOM
<b>120.625</b>	<b>126.5 335.65</b>	<b>132.4 (CTAF) 0</b>	<b>121.85</b>	<b>121.3</b>	<b>121.85</b> (When tower closed)	<b>122.95</b>



ELEV 912	TDZE 912
179° to RWY 18	81
4855 x 100	5000 x 100
TWR	36
964	271

HIRL Rwy 9-27  $\bullet$

MIRL Rwy 18-36  $\bullet$

REIL Rws 9, 18 and 36  $\bullet$

CATEGORY	A	B	C	D
LNNAV MDA	1380-1 468 (500-1)		1380-1 $\frac{3}{8}$ 468 (500-1 $\frac{3}{8}$ )	1380-1 $\frac{1}{2}$ 468 (500-1 $\frac{1}{2}$ )
<b>C</b> CIRCLING	1400-1 488 (500-1)		1460-1 $\frac{1}{2}$ 548 (600-1 $\frac{1}{2}$ )	1580-2 668 (700-2)

NC-1, 31 JAN 2019 to 28 FEB 2019

NC-1, 31 JAN 2019 to 28 FEB 2019