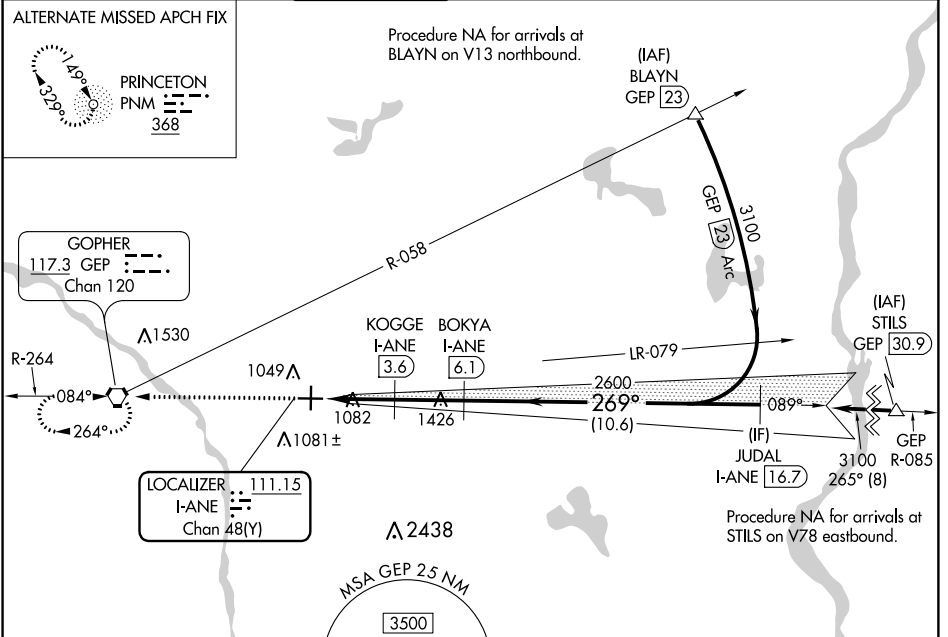


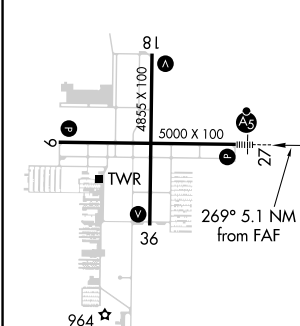
LOC/DME I-ANE 111.15 Chan 48 (Y)	APP CRS 269°	Rwy Idg TDZE Apt Elev	5000 910 912
---	------------------------	-----------------------------	---

ILS or LOC RWY 27
ANOKA COUNTY-BLAINE (JANES FIELD) (A.N.E.)

DME required.		MALSRR 	MISSED APPROACH: Climb to 2700 direct GEP VORTAC and hold.			
ATIS 120.625	MINNEAPOLIS APP CON 126.5 335.65	ANOKA TOWER* 132.4 (CTAF) 0	GND CON 121.85	CLNC DEL 121.3	MINNEAPOLIS CLNC DEL 121.85 (When tower closed)	UNICOM 122.95



ELEV 912	TDZE 910
----------	----------



HIRL Rwy 9-27	MIRL Rwy 18-36	REIL Rwys 9, 18, and 36
---------------	----------------	-------------------------



2700 GEP	Use I-ANE DME when on the localizer course.		JUDAL I-ANE 16.7
*LOC only	KOGGE I-ANE 3.6	BOKYA I-ANE 6.1	
I-ANE 1	I-ANE 2.2	2600	3100
GS 3.00° TCH 49			

CATEGORY	A	B	C	D
S-ILS 27	1110-½ 200 (200-½)			
S-LOC 27	1340-½ 430 (500-½)	1340-¾ 430 (500-¾)	1340-1 430 (500-1)	
CIRCLING	1400-1 488 (500-1)	1460-1½ 548 (600-1½)	1580-2 668 (700-2)	

NC-1, 31 JAN 2019 to 28 FEB 2019

NC-1, 31 JAN 2019 to 28 FEB 2019