


| | | | |
|---------------------------------|------------------------|-----------------------------|---|
| WAAS CH 50301 W25A | APP CRS 246° | Rwy Idg TDZE Apt Elev | 5500 515 529 |
|---------------------------------|------------------------|-----------------------------|---|

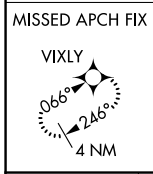
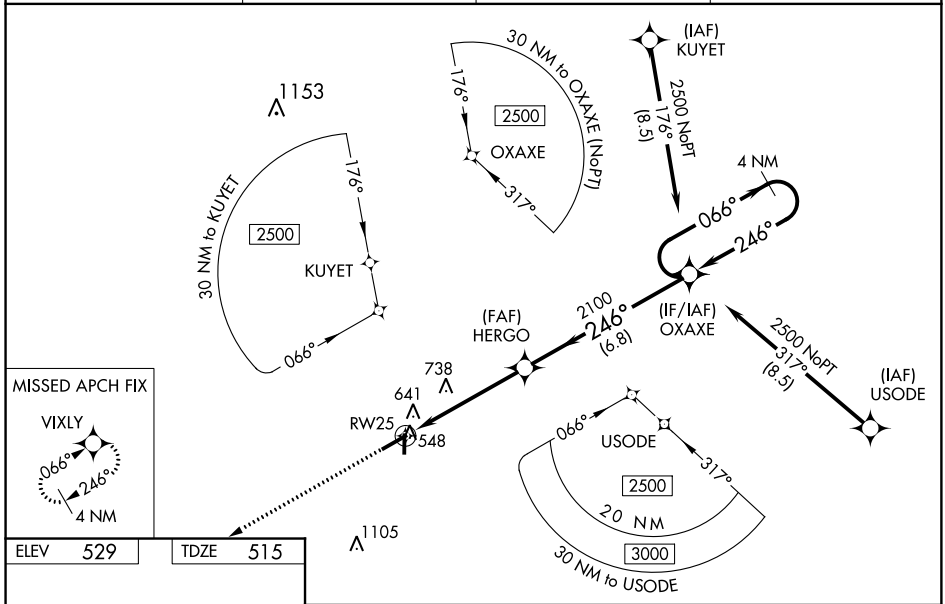
RNAV (GPS) RWY 25

AIKEN RGNL (AIK)

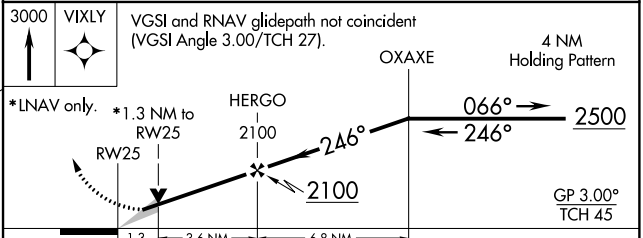
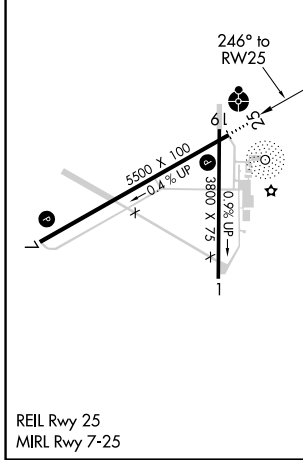
Baro-VNAV NA when using Augusta Rgnl at Bush Field altimeter setting.
 For uncompensated Baro-VNAV systems, LNAV/VNAV NA below -16°C (4°F) or above 40°C (104°F). DME/DME RNP-0.3 NA. VDP NA with Augusta Rgnl at Bush Field altimeter setting. When local altimeter setting not received, use Augusta Rgnl at Bush Field altimeter setting. increase LPV all Cats DA to 869 feet, LNAV/VNAV all Cats DA to 927 feet and all visibilities 3/8 mile; increase all MDA 120 feet and Cat C/D visibilities 1/4 mile. For inop ODALS, increase LPV all Cats visibility to 7/8 mile, LNAV/VNAV all Cats to 1 1/8 mile and LNAV Cat C/D to 1/4 mile. For inop ODALS when using Augusta Rgnl at Bush Field altimeter setting, increase LPV all Cats visibility to 1/4 mile, LNAV/VNAV all Cats to 1/2 mile and LNAV Cat D to 1 1/8 mile.

ODALS

MISSED APPROACH:
 Climb to 3000 direct VIXLY and hold.

| | | | |
|--------------------------|--|----------------------------|-------------------------------|
| AWOS-3 118.025 | AUGUSTA APP CON * 119.15 284.625 | CLNC DEL 126.075 | UNICOM 122.8 (CTAF) |
|--------------------------|--|----------------------------|-------------------------------|



| | |
|----------|----------|
| ELEV 529 | TDZE 515 |
|----------|----------|



| CATEGORY | A | B | C | D |
|--------------|----------------------|-----------------------|-------------------------------|-----------------------|
| LPV DA | | 765-3/4 | 250 (300-3/4) | |
| LNAV/VNAV DA | | 823-1 | 308 (300-1) | |
| LNAV MDA | 940-3/4 | 425 (500-3/4) | 940-1 1/8 | 425 (500-1 1/8) |
| CIRCLING | 980-1 451 (500-1) | 1000-1 471 (500-1) | 1000-1 1/2 471 (500-1 1/2) | 1080-2 551 (600-2) |

SE-2, 31 JAN 2019 to 28 FEB 2019

SE-2, 31 JAN 2019 to 28 FEB 2019