

VOR/DME GFK <b>114.3</b> Chan 90	APP CRS <b>344°</b>	Rwy Idg TDZE Apt Elev	<b>7351</b> <b>845</b> <b>845</b>
--	------------------------	-----------------------------	---

# VOR RWY 35L

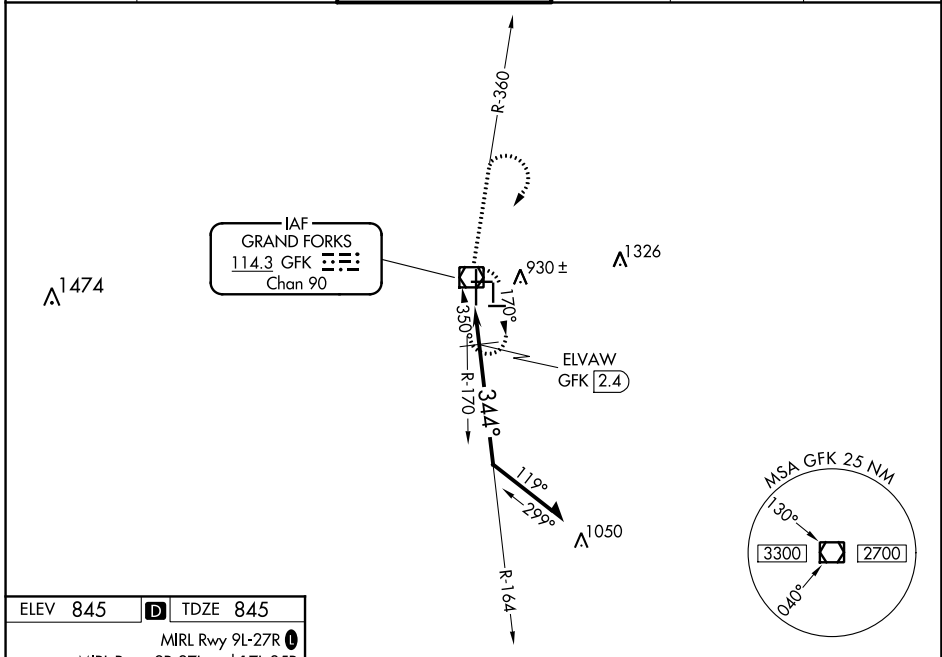
GRAND FORKS INTL (GFK)

**⚠** When local altimeter setting not received use Crookston altimeter setting and increase all MDA 80 feet; increase S-35L Cat C/D and Circling Cat C visibility 1/4 mile, and ELVAW fix minimums S-35L Cat C/D visibility 1/2 mile. For inop MALSR, increase S-35L Cat C/D visibility to 1 3/8 mile. For inop MALSR, increase ELVAW fix minimums S-35L Cat C/D visibility to RVR 5500.

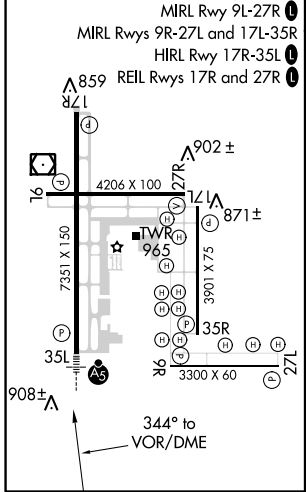


**MALSR**  
MISSED APPROACH: Climb to 1300 then climb to 3600 via GFK R-360 then right turn direct GFK VOR/DME and hold.

ATIS <b>119.4</b>	GRAND FORKS APP CON <b>118.1 318.1</b>	GRAND FORKS TOWER* <b>118.4(CTAF) 350.35</b>	GND CON <b>124.575</b>	CLNC DEL <b>135.725</b>	UNICOM <b>122.95</b>
----------------------	---	---	---------------------------	----------------------------	-------------------------



ELEV 845	<b>D</b>	TDZE 845
----------	----------	----------



1300	3600	GFK	GFK VOR/DME	Remain within 10 NM
------	------	-----	-------------	---------------------

VGSI and descent angles not coincident (VGSI Angle 2.76/TCH 61).

\*1440 when using Crookston altimeter setting.

ELVAW GFK 2.4

TCH 55

1360\*

164°

344°

2500

1.1 NM 1.4 NM

CATEGORY	A	B	C	D
S-35L	1360/24	515 (600-1/2)	1360/55	515 (600-1)
CIRCLING	1360-1	515 (600-1)	1360-1 1/2 515 (600-1 1/2)	1400-2 555 (600-2)
ELVAW FIX MINIMUMS				
S-35L	1220/24	375 (400-1/2)	1220/40	375 (400-3/4)
CIRCLING	1280-1 435 (500-1)	1300-1 455 (500-1)	1300-1 1/4 455 (500-1 1/4)	1400-2 555 (600-2)

NC-1, 31 JAN 2019 to 28 FEB 2019

NC-1, 31 JAN 2019 to 28 FEB 2019