

VOR/DME GFK 114.3 Chan 90	APP CRS 183°	Rwy Idg 7351 TDZE 843 Apt Elev 845
---	------------------------	---

VOR RWY 17R

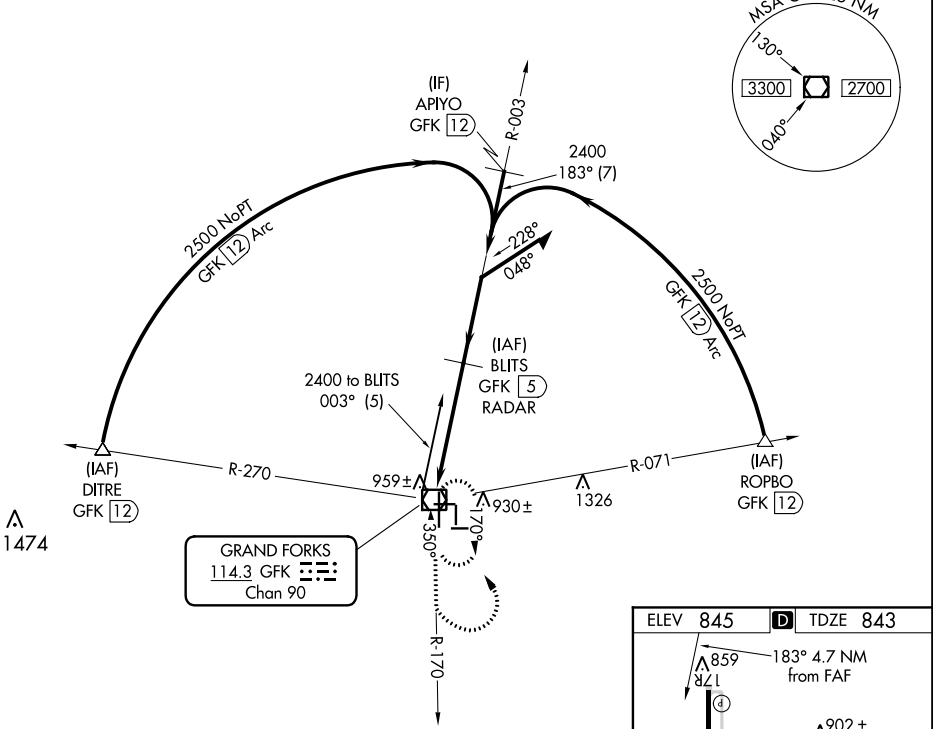
GRAND FORKS INTL (GFK)

▼ If local altimeter setting not received, use Crookston altimeter setting and increase all MDAs 80 feet.
▲ VDP NA with Crookston altimeter setting.

MISSED APPROACH: Climb to 3600 via GFK R-170 then left turn direct GFK VOR/DME and hold.

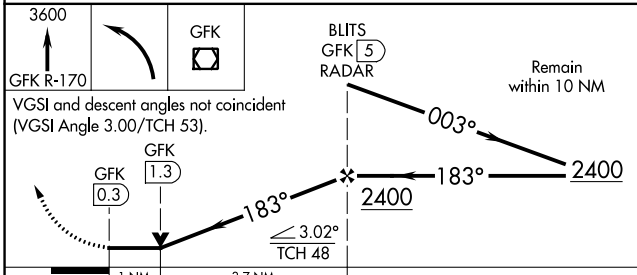
ATIS 119.4	GRAND FORKS APP CON 118.1 318.1	GRAND FORKS TOWER* 118.4(CTAF) 350.35	GND CON 124.575	CLNC DEL 135.725	UNICOM 122.95
----------------------	---	---	---------------------------	----------------------------	-------------------------

DME or RADAR REQUIRED



NC-1, 31 JAN 2019 to 28 FEB 2019

NC-1, 31 JAN 2019 to 28 FEB 2019



ELEV 845	D TDZE 843
-----------------	--------------------------

Map Details:
 - **183° 4.7 NM from FAF**: Distance from Final Approach Fix.
 - **902±**, **871±**, **965**, **908±**: Various altitudes and elevations.
 - **MIRL Rwy 9L-27R**, **MIRL Rwys 9R-27L and 17L-35R**, **HIRL Rwy 17R-35L**, **REIL Rwys 17R and 27R**: Runway information.
 - **FAF to MAP 4.7 NM**: Distance from FAF to the map.
 - **Knots**: 60, 90, 120, 150, 180.
 - **Min:Sec**: 4:42, 3:08, 2:21, 1:53, 1:34.

CATEGORY	A	B	C	D
S-17R	1220-1	377 (400-1)		1220-1 1/4 377 (400-1 1/4)
CIRCLING	1280-1 435 (500-1)	1300-1 455 (500-1)	1300-1 1/2 455 (500-1 1/2)	1400-2 555 (600-2)