

WAAS CH 70313 W35A	APP CRS 354°	Rwy Idg TDZE Apt Elev	7351 845 845
--	------------------------	-----------------------------	---

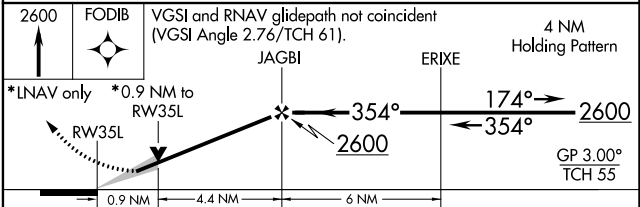
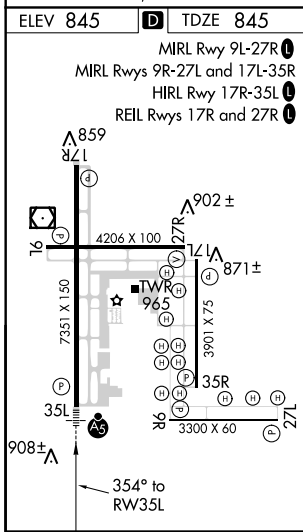
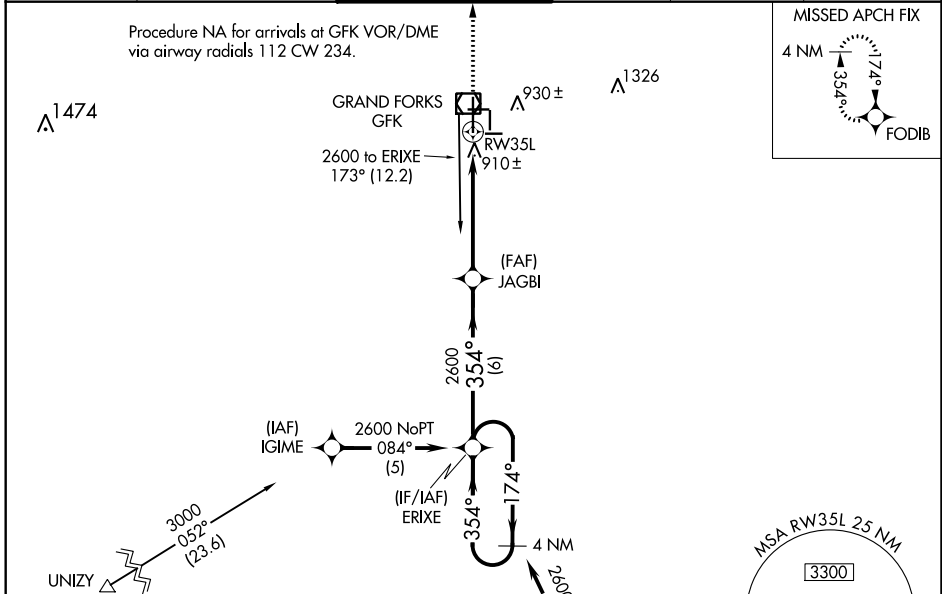
RNAV (GPS) RWY 35L

GRAND FORKS INTL (GFK)

⚠ DME/DME RNP-0.3 NA. When local altimeter setting not received, use Crookston altimeter setting and increase all DA/MDA 80 feet; increase LPV all Cats visibility 1/8 mile, LNAV/VNAV all Cats and LNAV Cat C/D visibility 1/4 mile. VDP NA when using Crookston altimeter setting. Baro-VNAV NA below -16°C (4°F). Baro-VNAV NA when using Crookston altimeter setting. For inop MALSRL when using Crookston altimeter setting, increase LPV all Cats visibility to RVR 5000 and LNAV Cat C/D visibility to RVR 6000.

MALSRL 	MISSED APPROACH: Climb to 2600 direct FODIB and hold.
------------	--

ATIS 119.4	GRAND FORKS APP CON 118.1 318.1	GRAND FORKS TOWER★ 118.4(CTAF) 350.35	GND CON 124.575	CLNC DEL 135.725	UNICOM 122.95
----------------------	---	---	---------------------------	----------------------------	-------------------------



CATEGORY	A	B	C	D
LPV DA	1095/50		250 (300-1)	
LNAV/VNAV DA	1174/30		329 (400-56)	
LNAV MDA	1180/24	335 (400-1/2)	1180/26	335 (400-1/2)
CIRCLING	1280-1 435 (500-1)	1300-1 455 (500-1)	1300-1½ 455 (500-1½)	1400-2 555 (600-2)

NC-1, 31 JAN 2019 to 28 FEB 2019

NC-1, 31 JAN 2019 to 28 FEB 2019