

| | | | |
|--|------------------------|-----------------------------|---|
| WAAS CH 63199 W17A | APP CRS 174° | Rwy Idg TDZE Apt Elev | 7351 843 845 |
|--|------------------------|-----------------------------|---|

RNAV (GPS) RWY 17R

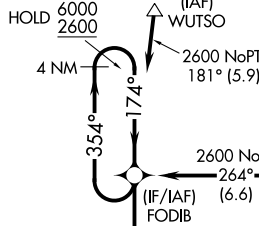
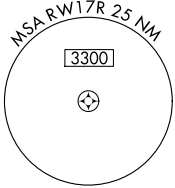
GRAND FORKS INTL (GFK)

RNP APCH.

⚠ Baro-VNAV NA when using Crookston altimeter setting. For uncompensated Baro-VNAV systems, LNAV/VNAV NA below -20°C or above 54°C. VDP NA with Crookston altimeter setting.
⚠ When local altimeter setting not received, use Crookston altimeter setting and increase all DA 62 feet and all MDA 80 feet and increase LPV and LNAV/VNAV all Cats visibility 1/8 SM, LNAV Cats C/D visibility 1/8 SM, and Circling Cat C visibility 1/4 SM.

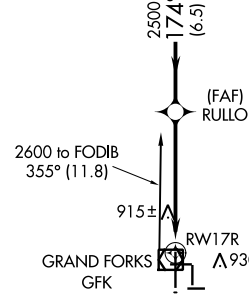
MISSED APPROACH:
Climb to 2600 direct ERIXE and hold.

| | | | | | |
|----------------------|---|---|---------------------------|----------------------------|-------------------------|
| ATIS 119.4 | GRAND FORKS APP CON 118.1 318.1 | GRAND FORKS TOWER* 118.4(CTAF) 0 350.35 | GND CON 124.575 | CLNC DEL 135.725 | UNICOM 122.95 |
|----------------------|---|---|---------------------------|----------------------------|-------------------------|



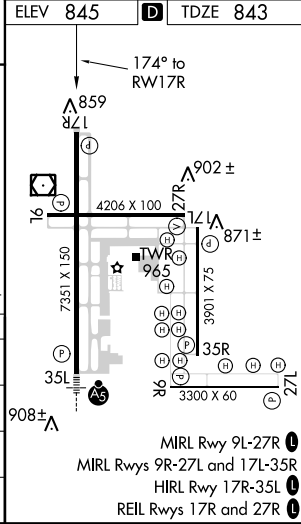
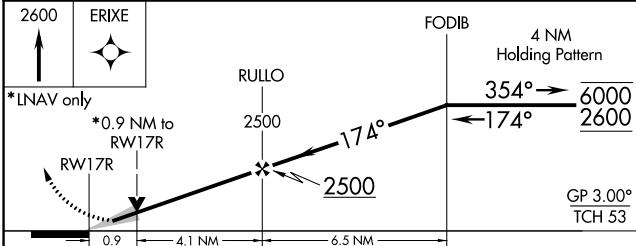
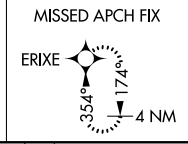
Procedure NA for arrivals at WUTSO on V181 northbound.

Procedure NA for arrivals at EYWUS on V171 northeast bound.



△1474

△1326



| CATEGORY | A | B | C | D |
|-------------------|-----------------------|-----------------------|-------------------------------|-----------------------|
| LPV DA | | 1043-3/4 | 200 (200-3/4) | |
| LNAV/VNAV DA | | 1093-3/4 | 250 (300-3/4) | |
| LNAV MDA | | 1180-1 | 337 (400-1) | |
| C CIRCLING | 1260-1 415 (500-1) | 1300-1 455 (500-1) | 1400-1 1/2 555 (600-1 1/2) | 1400-2 555 (600-2) |

NC-1, 31 JAN 2019 to 28 FEB 2019

NC-1, 31 JAN 2019 to 28 FEB 2019