

LOC/DME I-GFK <b>109.1</b> Chan <b>28</b>	APP CRS <b>174°</b>	Rwy Idg TDZE Apt Elev	<b>7351</b> <b>843</b> <b>845</b>
---	------------------------	-----------------------------	---

# LOC BC RWY 17R

GRAND FORKS INTL (GFK)

**⚠** Visibility reduction by helicopters NA. DME or RADAR or ADF required. When local altimeter setting not received, use Crookston altimeter setting and increase all MDA 80 feet, increase S-17R Cats C/D visibility and WUSIK fix minimums S-17R Cats C/D visibility ¼ mile.

**MISSED APPROACH:** Climb to 2600 via I-GFK south course to HISER LOM /I-GFK 6.9 DME/RADAR and hold.

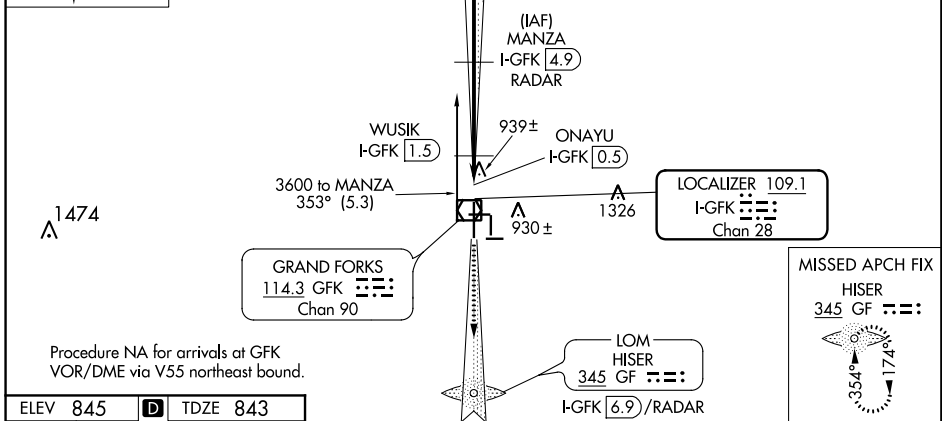
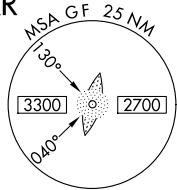
ATIS <b>119.4</b>	GRAND FORKS APP CON <b>118.1 318.1</b>	GRAND FORKS TOWER* <b>118.4(CTAF) 350.35</b>	GND CON <b>124.575</b>	CLNC DEL <b>135.725</b>	UNICOM <b>122.95</b>
----------------------	---	---	---------------------------	----------------------------	-------------------------

**ALTERNATE MISSED APCH FIX**  
APCH FIX  
GRAND FORKS  
114.3 GFK  
Chan 90

R-173

## BACK COURSE

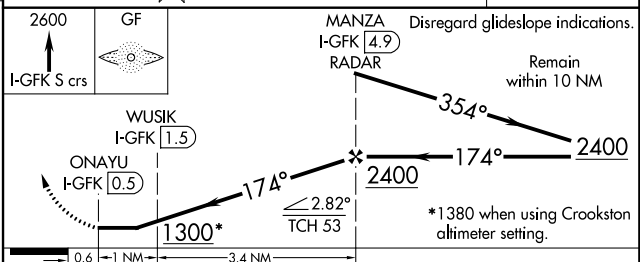
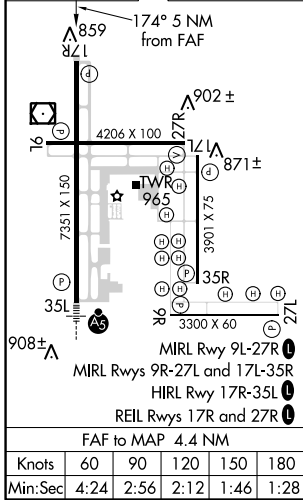
## DME or RADAR REQUIRED



Procedure NA for arrivals at GFK VOR/DME via V55 northeast bound.

**MISSED APCH FIX**  
HISER  
345 GF

ELEV <b>845</b>	<b>D</b>	TDZE <b>843</b>
-----------------	----------	-----------------



CATEGORY	A	B	C	D
S-17R	1300-1	457 (500-1)	1300-1¼ 457 (500-1¼)	1300-1½ 457 (500-1½)
CIRCLING	1300-1	455 (500-1)	1300-1½ 455 (500-1½)	1400-2 555 (600-2)
<b>WUSIK FIX MINIMUMS</b>				
S-17R	1200-1 357 (400-1)			1200-1¼ 357 (400-1¼)
CIRCLING	1280-1 435 (500-1)	1300-1 455 (500-1)	1300-1½ 455 (500-1½)	1400-2 555 (600-2)

NC-1, 31 JAN 2019 to 28 FEB 2019

NC-1, 31 JAN 2019 to 28 FEB 2019