


LOC/DME I-GFK <b>109.1</b> Chan 28	APP CRS <b>354°</b>	Rwy Idg TDZE Apt Elev	<b>7351</b> <b>845</b> <b>845</b>
--	------------------------	-----------------------------	---

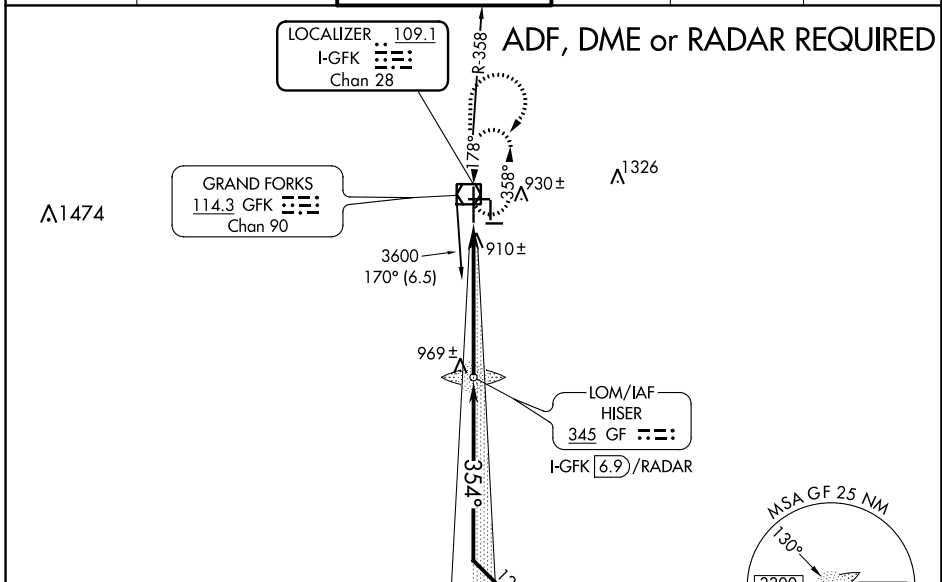
# ILS or LOC RWY 35L

GRAND FORKS INTL (GFK)

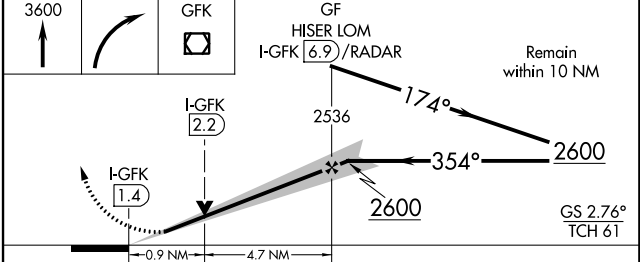
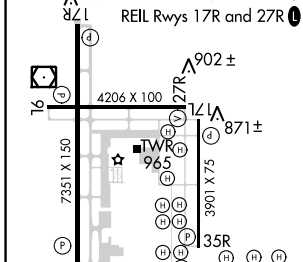
**⚠** When local altimeter setting not received, use Crookston altimeter setting and increase all DA/MDA 80 feet; increase S-LOC 35L Cats C/D/E visibility 1/8 mile, and Circling Cat E visibility 1/4 mile. Procedure turn NA for Cat E aircraft, RADAR required. VDP NA with Crookston altimeter setting. For inop MALSRS, increase S-ILS 35L Cat E visibility to RVR 4000 and S-LOC 35L Cats C/D/E visibility to RVR 4500. For inop MALSRS when using Crookston altimeter setting, increase S-ILS 35L all Cats visibility to RVR 4500 and S-LOC 35L Cat E visibility to RVR 6000.

**MALSRS**  
  
**MISSED APPROACH:**  
 Climb to 3600 then right turn direct GFK VOR/DME and hold.

ATIS <b>119.4</b>	GRAND FORKS APP CON <b>118.1 318.1</b>	GRAND FORKS TOWER* <b>118.4(CTAF) 350.35</b>	GND CON <b>124.575</b>	CLNC DEL <b>135.725</b>	UNICOM <b>122.95</b>
----------------------	---	---	---------------------------	----------------------------	-------------------------



ELEV 845	TDZE 845
MIRL Rwy 9L-27R	
MIRL Rwys 9R-27L and 17L-35R	
HIRL Rwy 17R-35L	
REIL Rwys 17R and 27R	



CATEGORY	A	B	C	D	E
S-ILS 35L	1045/24 200 (200-1/2)				
S-LOC 35L	1180/24	335 (400-1/2)	1180/26 335 (400-1/2)		
CIRCLING	1280-1 435 (500-1)	1300-1 455 (500-1)	1300-1 1/2 455 (500-1 1/2)	1400-2 555 (600-2)	1520-2 1/2 675 (700-2 1/2)

GRAND FORKS, NORTH DAKOTA  
 Amdt 12B 01FEB18

47°57'N-97°10'W

# GRAND FORKS INTL (GFK)

## ILS or LOC RWY 35L

NC-1, 31 JAN 2019 to 28 FEB 2019

NC-1, 31 JAN 2019 to 28 FEB 2019